

# 7-080 Quarter-Turn Pr20.1 L18

for cutout 20.1, length 18, stainless steel AISI 316L

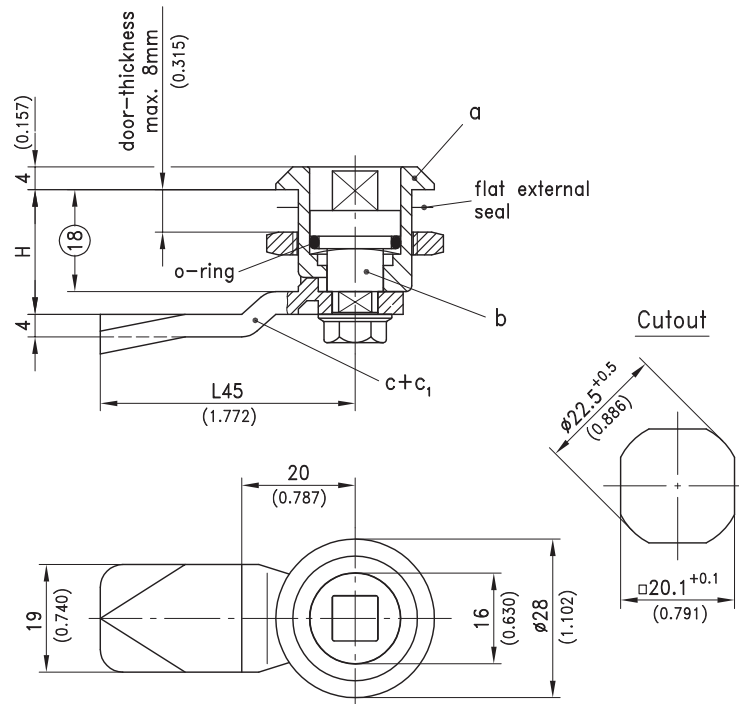
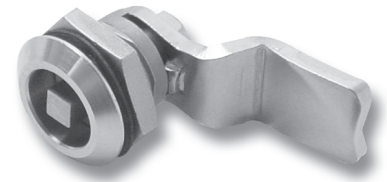


Quarter-Turn, RH or LH application.

- Water- and dust-tight according to IP65 DIN EN 60529.
- For IP67 use additional O-Ring 10x2mm.
- This Quarter-Turn consists of three basic parts which can be combined to suit your application.
- On request parts can be assembled by DIRAK.
- A pre-assembled Quarter-Turn can be installed in the cutout.

## Material:

- **Housing and Grounding nut:** stainless steel AISI 316L or PA, black
- **Insert:** stainless steel AISI 316L or PA
- **Cam:** stainless steel AISI 304
- **Grounding clip:** stainless steel AISI 316



see page

a) Housing with single sided grounding nut (stainless steel) and flat external seal	200-9043
PA with nut (stainless steel)	200-9044
PA with grounding clip	200-9064
b) Insert with screw, wave washer and O-ring	
Square 6mm	200-9146
Square 7mm	200-9119
Square 8mm	200-9120
Triangular 7mm	200-9121
Triangular 8mm	200-9122
Double bit 3mm	200-9123
Double bit 5mm	200-9124
Slotted 2x4mm deep	200-9151
Star knob with stainless steel core/insert with PA knob	200-9125
Wing knob with stainless steel core/insert with PA knob	200-9179
7/16" hex.	200-9192
Socket hex. 8 mm (5/16")	200-9195
Socket hex. 8 mm (5/16"), with pin	100-9118
IP67 through additional	
O-ring 10x2mm	200-1002
Key for insert	09.10
Dust cap and finger pull	02.104

c) Cams		
L45mm/1.772		
H in mm/inch		
6 / 0.236		200-0506
8 / 0.315		200-0508
10 / 0.394		200-0510
14 / 0.551		200-0514
16 / 0.630		200-0516
18 / 0.709		200-0518
20 / 0.787		200-0520
22 / 0.866		200-0522
24 / 0.945		200-0524
26 / 1.024		200-0526
28 / 1.102		200-0528
32 / 1.260		200-0532
50 / 1.969		200-0550
c1) Cams		
L35mm/1.378		
H in mm/inch		
20 / 0.787		200-4535.00-00020
22 / 0.866		200-4535.00-00022
d) Assembling of cam, with O-ring		200-0002