

# 7-082 Quarter-Turn Pr20.1 L30-60

for cutout 20.1, lengths 30/36/40/50/60, stainless steel AISI 304

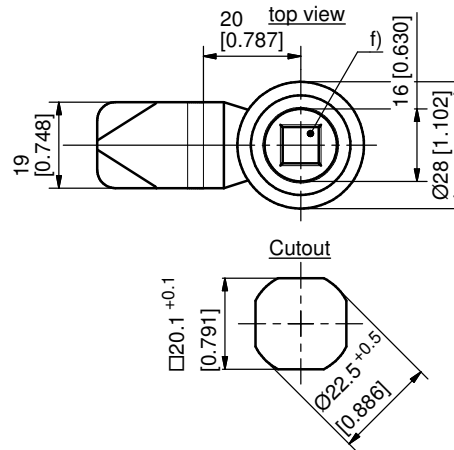
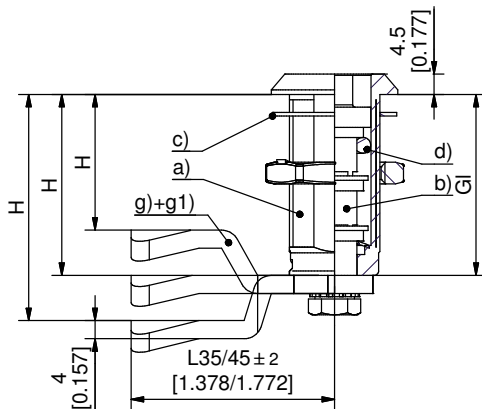


Quarter Turn stainless steel with extended housings.

- RH or LH application.
- This Quarter-turn consists of three basic parts which can be combined to suit your application.
- On request parts can be assembled by DIRAK.

### Material:

- **Housing:** stainless steel AISI 304
- **Flat external seal and o-ring:** NBR
- **Insert:** stainless steel AISI 316L and PA
- **Grounding nut:** stainless steel AISI 316L
- **Adapter:** stainless steel AISI 316
- **Hexagon screw and wave washer:** stainless steel
- **Cam:** stainless steel AISI 304



| Housing length  | a) Housing with grounding nut | b) Adapter set (can consist of one or more separate extensions ) with screw and toothed lock washer |
|---|-------------------------------|---|
| GI = 30mm/1.181   | 200-9072                      | 100-9019  |
| GI = 36mm/1.417   | 100-9024                      | 100-9020  |
| GI = 40mm/1.575   | 200-9073                      | 100-9021  |
| GI = 50mm/1.969   | 200-9074                      | 100-9022  |
| GI = 60mm/2.362   | 200-9075                      | 100-9023  |
| c) Flat external seal                                   |                               | 200-0901  |
| d) O-ring 9x3.5mm                                       |                               | 839-3771.00-00935   |
| e) Assembling adapter with O-ring                       |                               | 200-0004  |
| f) Insert with screw, wave washer and O-ring            | see page                      |   |
| g) Cams L45mm<br>H at housing length (GI):              |                               |   |
| GI 30 GI 36 GI 40 GI 50 GI 60                           |                               |   |
| Square 6mm  | 200-9146                      | 18 24 28 38 48 200-0506   |
| Square 7mm  | 200-9119                      | 20 26 30 40 50 200-0508   |
| Square 8mm  | 200-9120                      | 22 28 32 42 52 200-0510   |
| Triangular 7mm  | 200-9121                      | 26 32 36 46 56 200-0514   |
| Triangular 8mm  | 200-9122                      | 28 34 38 48 58 200-0516   |
| Double bit 3mm  | 200-9123                      | 30 36 40 50 60 200-0518   |
| Double bit 5mm  | 200-9124                      | 32 38 42 52 62 200-0520   |
| Slotted 2x4mm deep                                      | 200-9151                      | 34 40 44 54 64 200-0522   |
| Star knob with stainless steel core/insert with PA knob | 200-9125                      | 36 42 46 56 66 200-0524   |
| Wing knob with stainless steel core/insert with PA knob | 200-9179                      | 38 44 48 58 68 200-0526   |
| 7/16" hex.  | 200-9192                      | 40 46 50 60 70 200-0528   |
| Socket hex. 8 mm (5/16")                                | 200-9195                      | 44 50 54 64 74 200-0532   |
| Socket hex. 8 mm (5/16"), with pin                      | 100-9118                      | 62 68 72 82 92 200-0550   |
| g1) Cams L35mm<br>H at housing length (GI):             |                               |   |
| GI 30 GI 36 GI 40 GI 50 GI 60                           |                               |   |
| Key for insert  | 09.10                         | 32 38 42 52 62 200-4535.00-00020  |
| Dust cap and finger pull                                | 02.104                        | 34 40 44 54 64 200-4535.00-00022  |
| h) Assembling of cam, with O-ring                       |                               | 200-0002  |