

7-082.01 Quarter-Turn Pr20.1 L30

low profile, stainless steel AISI 316L

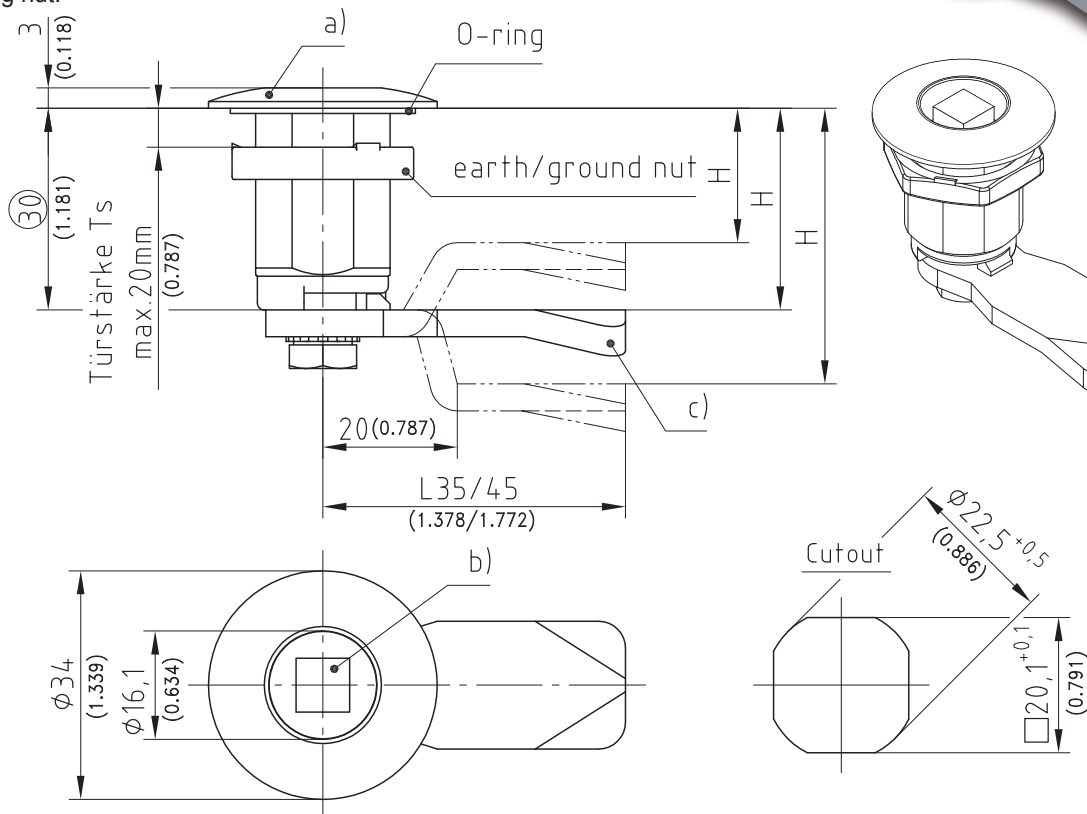
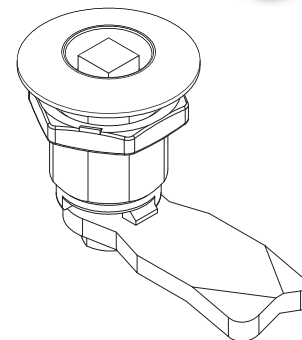
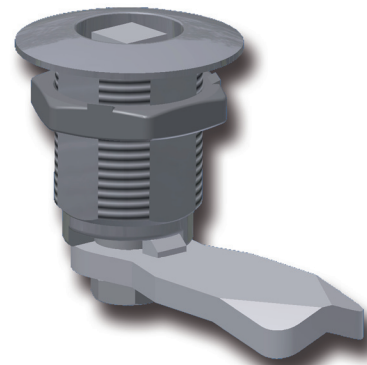


Low Profile stainless steel Quarter-Turn.

- RH or LH application.
- Water- and dust-tight according to IP65 DIN EN 60529.
- This Quarter-Turn consists of three basic parts which can be combined to suit your application.
- On request parts can be assembled.
- The Quarter-Turn, stainless steel, can be screwed into the cutout with the pre-assembled cam.
- Single sided Groundin/Earthing by earthing nut.

Material:

- **Housing, Grounding/Earthing nut, Insert and self locking hexagon head screw:** stainless steel
- **O-ring and Flat external seal:** NBR



a) Housing with single sided grounding/ earthing nut and flat external seal	see page	c) Cams L45mm / AISI 304	
AISI 316L	100-9048.00-00030*	H in mm / inch	
Adapter set	100-9019	18 / 0.709	200-0506
b) Insert with screw, wave washer and O-ring		20 / 0.787	200-0508
Square 6	200-9146	22 / 0.866	200-0510
Square 7	200-9119	26 / 1.024	200-0514
Square 8	200-9120	28 / 1.102	200-0516
Triangular 7	200-9121	30 / 1.181	200-0518
Triangular 8	200-9122	32 / 1.260	200-0520
Double bit 3	200-9123	34 / 1.339	200-0522
Double bit 5	200-9124	36 / 1.417	200-0524
Slotted 2x4 deep	200-9151	38 / 1.496	200-0526
**Star knob	200-9125	40 / 1.575	200-0528
**Wing knob	200-9179	44 / 1.732	200-0532
7/16" hex.	200-9192	62 / 2.441	200-0550
Socket hex. 8 (5/16")	200-9195	c1) Cams L35mm / AISI 304	
Socket hex. 8 (5/16") with pin	100-9118	H in mm / inch	
*Prices and delivery time on request!		32 / 1.260	200-4535.00-00020
**Stainless steel core/insert with PA knob		34 / 1.339	200-4535.00-00022
Key for insert	09.8, 09.11	d) Assembling of cam	200-0002