

7-084 Cylinder Quarter-Turn Pr20.1 L18

for cutout 20.1, length 18, stainless steel AISI 316



Cylinder Quarter-Turn stainless steel version with grounding nut.

• Version a)

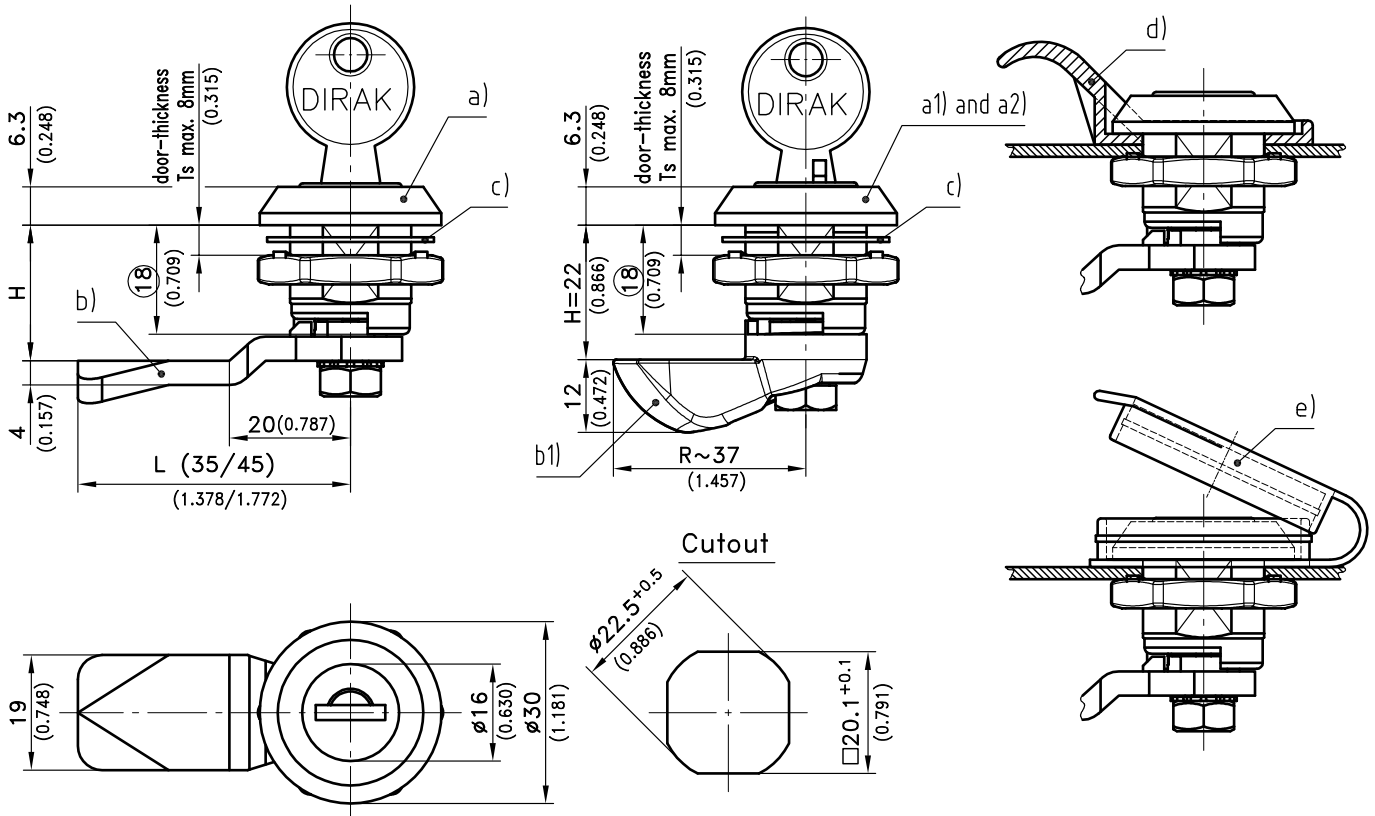
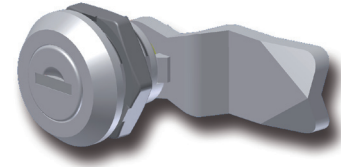
- For stability the profile-cylinder is secured by a nut DIN 934.
- The wave washer fitted between housing and cam, prevents the cam from moving downwards in unlocked position and neutralizes possible cumulative play.

• Version a1) and a2)

- To insure turns freely, the slam-cam is secured by a shoulder screw.

Material:

- **Housing, grounding nut, adapter, cylinder barrel, hexagon nut and wave washer:** stainless steel AISI 316



	Part No.	see page
a) Housing with grounding nut and cylinder barrel		
keyed alike DIRAK 1333	200-9232.00-00000	
keyed different/mixed	200-9233.00-00000	
a1) Housing with grounding nut, cylinder barrel and slam-cam RH (with adapter)		
keyed alike DIRAK 1333	200-9236.00-01333	
keyed different/mixed	200-9236.00-99999	
a2) Housing with grounding nut, cylinder barrel and slam-cam LH (with adapter)		
keyed alike DIRAK 1333	200-9237.00-01333	
keyed different/mixed	200-9237.00-99999	
b) Cams		10.16
b1) Slam-cam, see product system 7-076		
c) Flat external seal	200-0901.00-00000	
d) Finger pulls see product system 1-270.01		
e) Dustcaps see product system 1-270		