

1-264 Slam-Cam



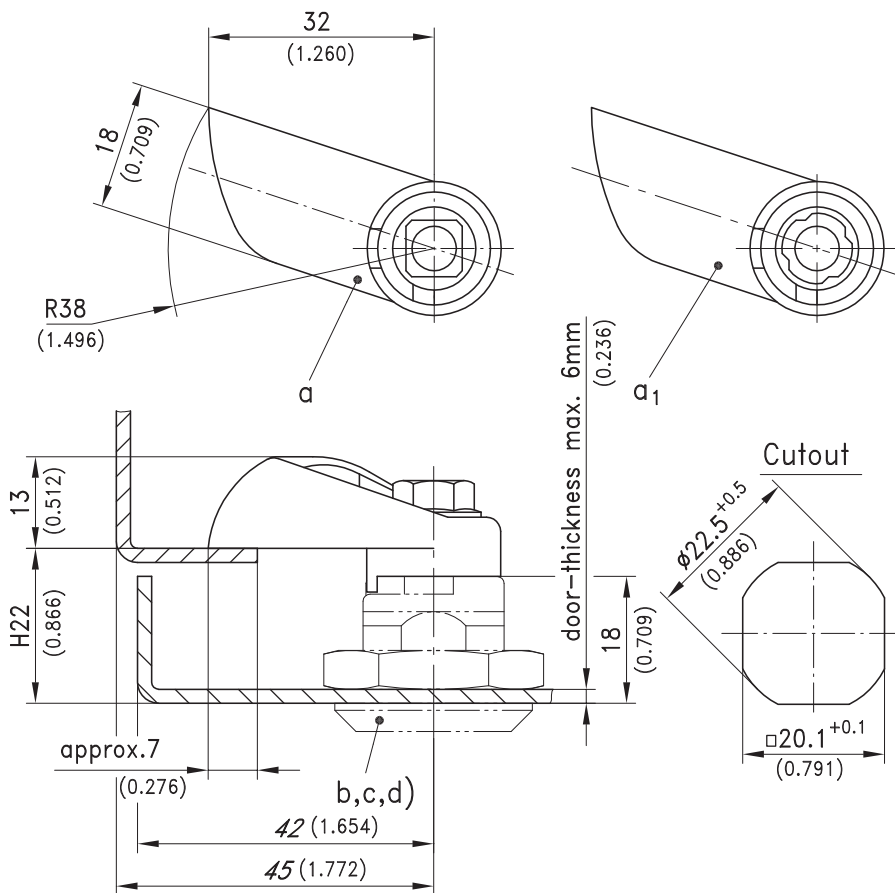
Slam-Cam for Slam Doors. Locking without key or tool.

- **To a):** The Teflon washer replaces the wave washer underneath the insert.
- Used with all Quarter-Turns and inserts according.
- **To a1):** Slam-Cam with free-stroke for applications with cylinder locks and handles.
- A Slam-Cam set consists of a cam, a spring and M6x10 hex screw with underhead serrations self securing powder dot.
- This self securing powder dot is to tune / adjust the correct friction for the stroke.

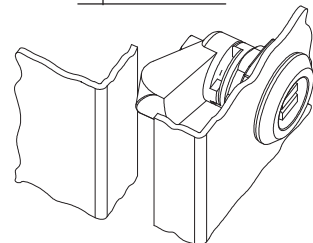
- The screw supplied with the handle is not required.
- **Attention:**
- On request, latch units with this cam should be assembled by DIRAK. A pre-assembled Quarter-Turn can be installed through the cutout.

Material:

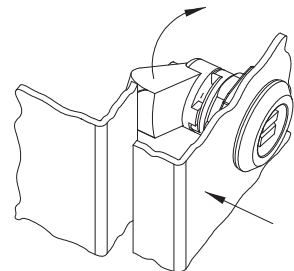
- a) and a1)
- **Slam-cam:** zinc die, chrome plated
- **Spring:** steel, zinc plated
- **Spacer:** POM



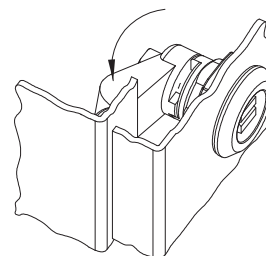
Operation



open position



cam is pushed upwards against springforce



closed position
springloaded cam drops behind frame

| | | |
|------------------------------------------------------------|-----------------|-----------------------------------|
| a) Slam-Cam with spring and Teflon washer | Part No. | see page |
| RH version, e.g. hinges on RH side | 200-9605 | |
| LH version, e.g. hinges on LH side | 200-9606 | |
| Other dimensions on request. | | |
| a1) Slam-cam with free-stroke (see description right side) | | |
| RH version, e.g. hinges on RH side | 200-9607 | |
| LH version, e.g. hinges on LH side | 200-9608 | |
| b) Housing | | 02.40, 02.41, 02.43, 02.46 |
| c) Inserts | | 02.48, 02.49 |
| d) Handles and cylinder locks | | 02.54, 02.70 |