

1-103SL Slide Shoe for Cams SNAP-LINE



Slide shoe for cams, 2 parts, consisting of housing and latch.

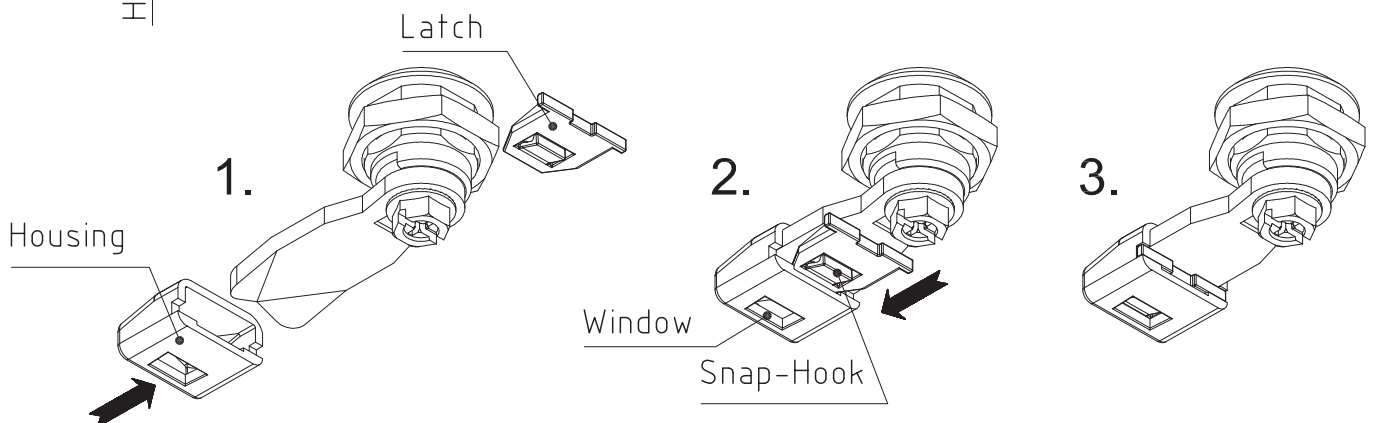
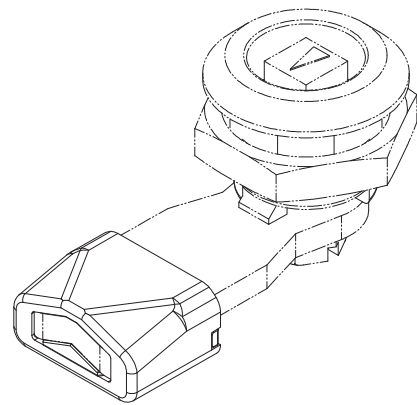
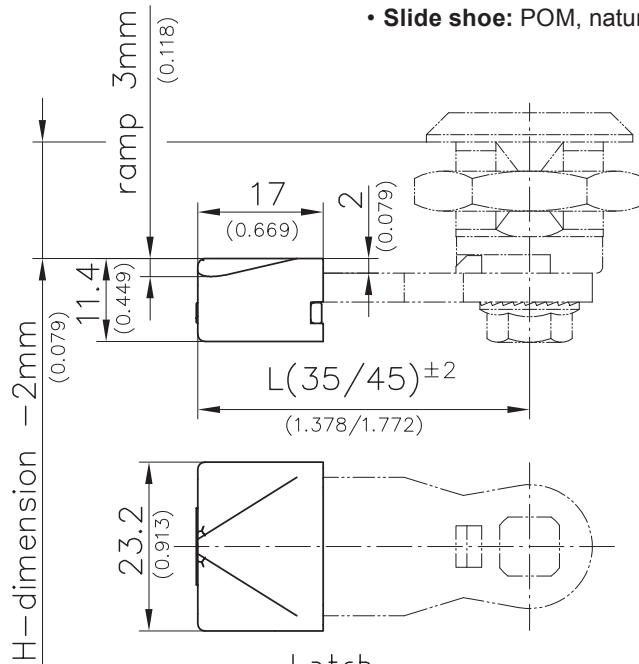
- Matching cams as of 35 mm, steel product system 1-102 and stainless steel product system 7-080, in combination with a 3-point-cam adapter product system 2-151 it matches 3-point cam applications as well.
- **Not suitable for 3-point cams of product system 2-150 and 1-102.**
- No abrasion of the metal of the clamping surface resp. cam and therefore safety concerning electronic built-in components (risk of short circuits in computer, server etc.).
- Good gliding properties, therefore low friction coefficient, no fretting of the material.
- Prevents the surface from being scratched.

- Tool-less assembly and disassembly. The housing will be hold at the slope of the cam and being fixed to the latch.
- The assembly will be carried out with the already installed Quarter-turn, it is possible to retrofit at any time (please take the H-dimension into consideration).
- Separable after durability (recyclable).
- **Caution:** The H-dimension diminishes by 2mm. E.g. cam 200-0418 (H-dimension 18mm) results into an H-dimension of 16mm.
- Vibration-proof.
- The Slide shoe **cannot** be used with the following cams: 200-0606, 200-0608, 200-0610, 200-0613, 200-0614, 200-0402, 200-0404, 200-0406, 200-0408 and 200-0410.



Material:

- Slide shoe: POM, natural



The Housing will be pushed onto the cam until it aligns with the cam.

The Latch will be pushed underneath the cam into the remaining space until the snap-hook is latched into the window audibly.

Fitted position

	packing unit	Part No.
Slide shoe	100	200-9622