

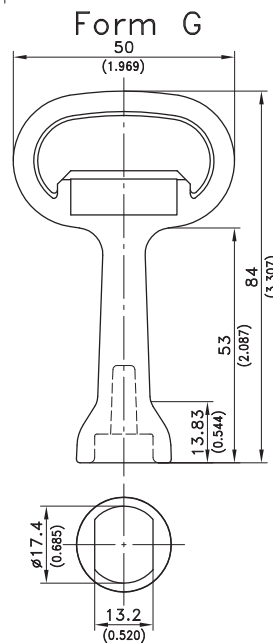
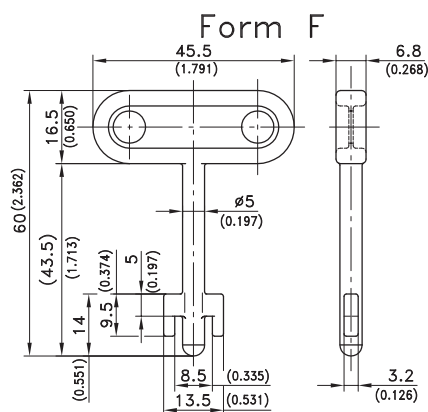
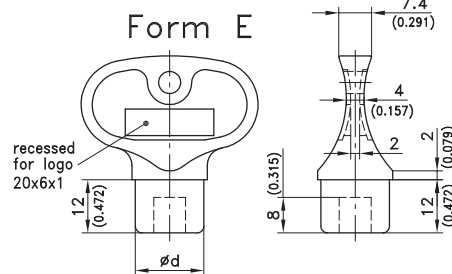
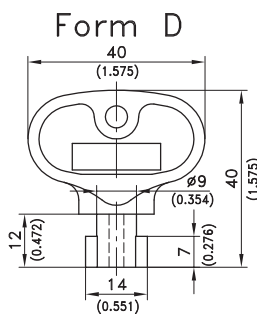
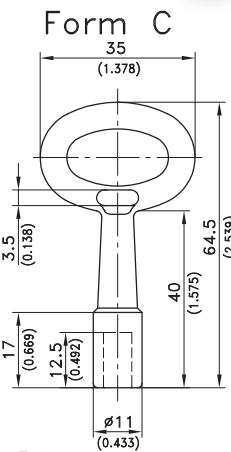
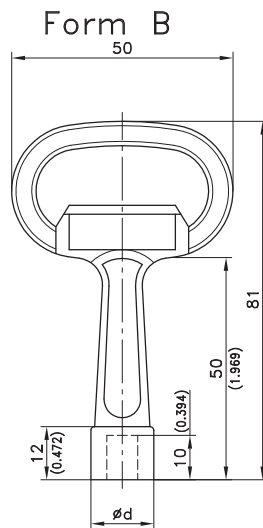
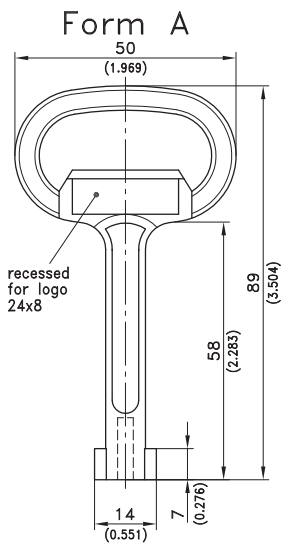
6-100 Key



Keys for Quarter-Turns, 200 and 220 series and for insert see product system 2-141.

Material:

- A), B), C), F) and G)
- **Key:** zinc die, untreated
- D) and E)
- **Polyamide key:** PA, black



6-100 Key

Form	Key type	Size	d	Part No.
A	Double bit	3mm pin		204-0107
		5mm pin		204-0108
B	Female key, hollow	Square 6mm	11.5/0.453	204-0111
		Square 7mm	14.2/0.559	204-0102
	Female key hollow	Square 8mm	14.2/0.559	204-0103
		Triangular 6.5mm	11.5/0.453	204-0112
		Triangular 6.5mm CNOMO	14.2/0.559	204-0106
		Triangular 7mm	14.2/0.559	204-0104
		Triangular 8mm	14.2/0.559	204-0105
		Triangular 9mm EDF	15.9/0.656	204-0113
	Hex	SW10	15.9/0.626	204-0139
	Hex Belcore	7/16"	15.6/0.614	204-0134.30
	Daimler Benz type		11.5/0.453	204-0109
	Crown type		15.9/0.626	204-0110
	Crescent Czech		15.9/0.626	204-0116
	Male key	for insert socket square 6mm		204-0119
	Male key	for insert socket square 7mm		204-0120
	Male key	for insert socket square 8mm		204-0121
	Male key	5/16" (8mm) with hole for 3mm pin		204-0133.30
		(for inserts 200-9172 and 200-9178, also for socket hex 8 without pin)		
		Emergency key		204-0301
		For orders of 2000 pieces and over, we can supply this key with your logo.		
	Please ask for more details.			
	Order example: 204-0111- company name			
C	Female key, hollow	Square 6mm		204-0501
		Triangular 6.5mm		204-0502
	For orders of 2000 pieces and over, we can supply this key with your logo.			
	Please ask for more details.			
D	Double bit	3mm pin		204-0407.03
		5mm pin		204-0408.03
E	Female key, hollow	Square 6mm	11.5/0.453	204-0401.03
		Logo on both sides	Square 7mm	15.5/0.610
		Square 8mm	15.5/0.610	204-0403.03*
		Triangular 6.5mm	11.5/0.453	204-0404.03
		Triangular 7mm	15.5/0.610	204-0405.03*
		Triangular 8mm	15.5/0.610	204-0406.03*
		Screwdriver type	10x1.4 / 0.394x0.055	204-0409.03
		For orders of 5000 pieces and over, we can supply this key with your logo.		
	Please ask for more details.			
F	Key	FIAT		204-0302.42
G	Female key, hollow	SW13		204-0140

*These female keys cannot be used with the safety quarter-turn product system 1-085 and hinged recessed handle product system 6-1380.