

2-102 Swinghandle RS 105

for cutout 105, for round rods, security tested

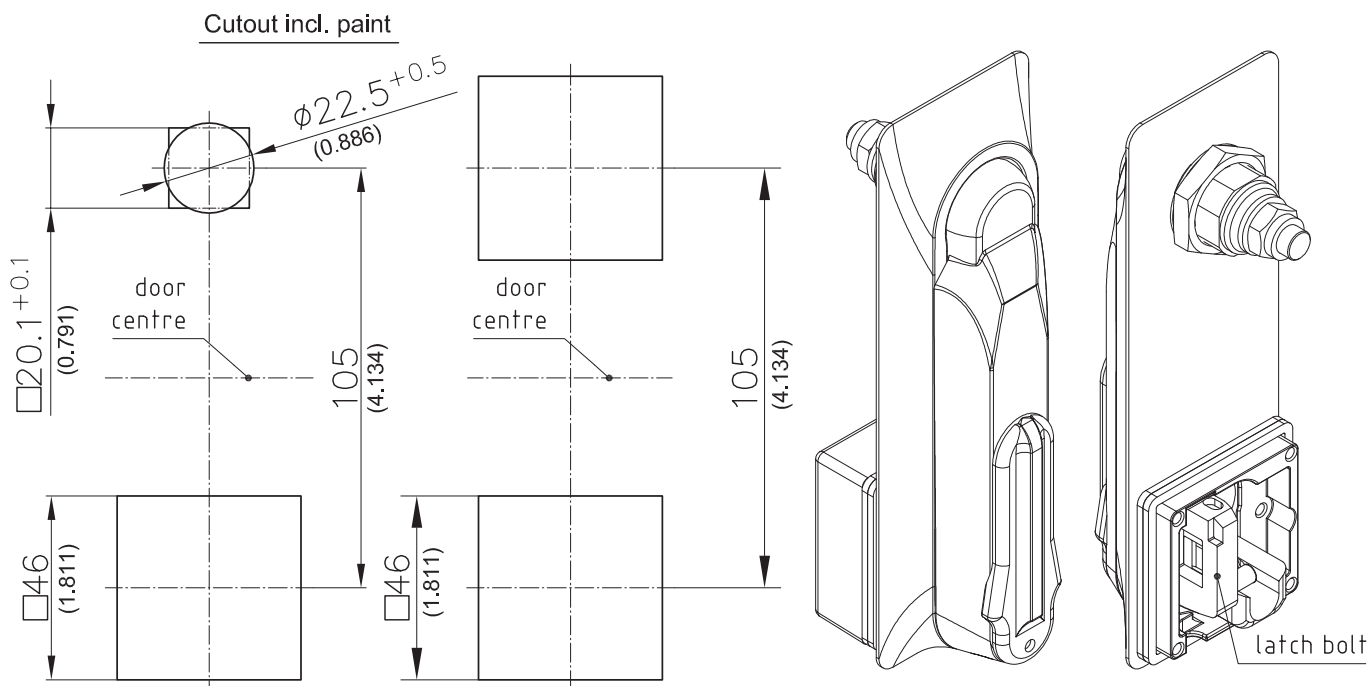


Low profile swinghandle, zinc die "105", for profile-cylinder and round rods. For sheet-metal and plastic enclosures. The swinghandle has 90° rotation.

- RH or LH application.
- The swinghandle is latched by a springloaded bolt, and in addition has a hardened steel anti cutting plate in the handle. Both protect against vandalism/tampering.
- Complies with security test to DIN 1630 WK II.
- Bolt is controlled by a Euro Cylinder to DIN 18254 (40 or 45mm).
- Water- and dust-tight according to IP65 DIN EN 60529.
- The Swinghandle can be provided with an electrical System, see www.elinebydirak.de. Please contact DIRAK.

Material:

- a) • **Swinghandle, fastener, dish, dust cover and cap:** zinc die, black
- **Other surfaces on request!**
- **Bolt:** stainless steel AISI 316
- **Shaft:** brass
- **Washer, nut and screw:** steel, zinc plated
- **Flat external seal:** NBR/ Fiber b) and b1)
- **3- and 2-point cam:** steel, zinc plated c)
- **Round rods:** steel, zinc plated d)
- **Adapter:** zinc die e)
- **Rod Guide:** PA, black

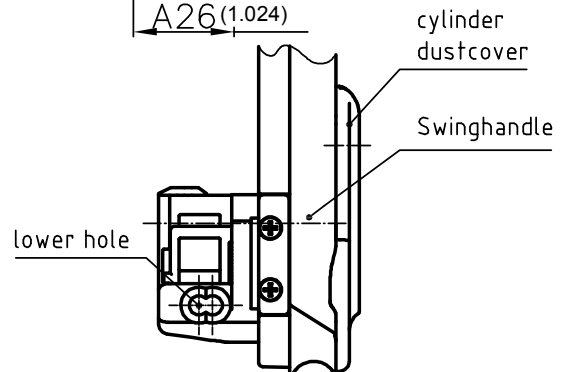
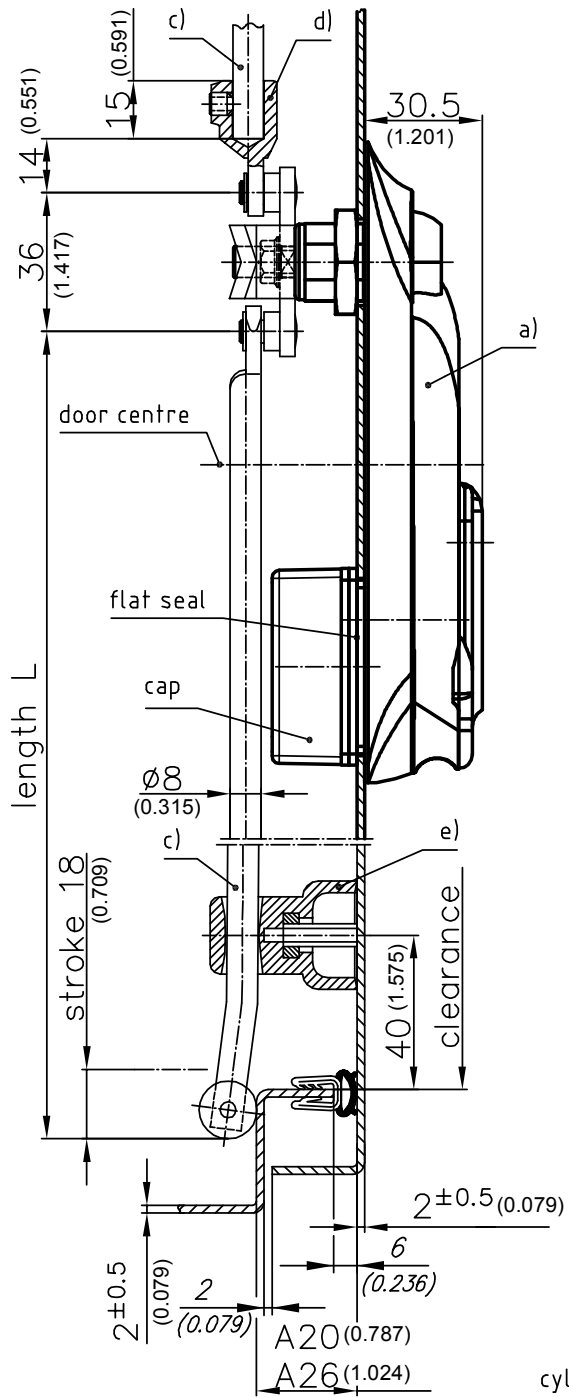
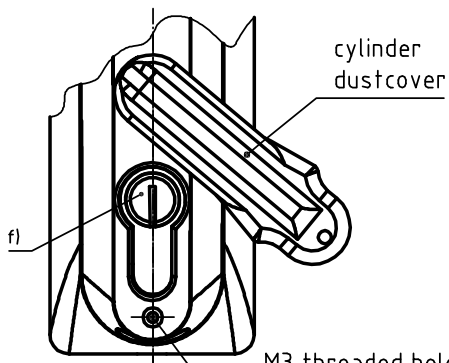
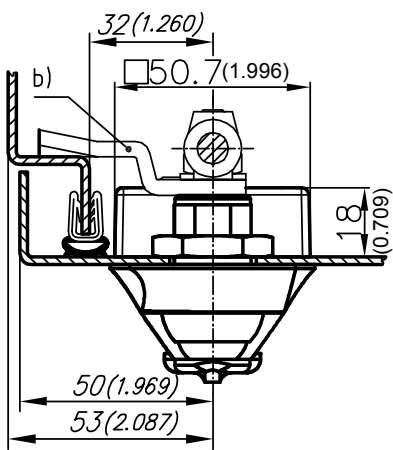
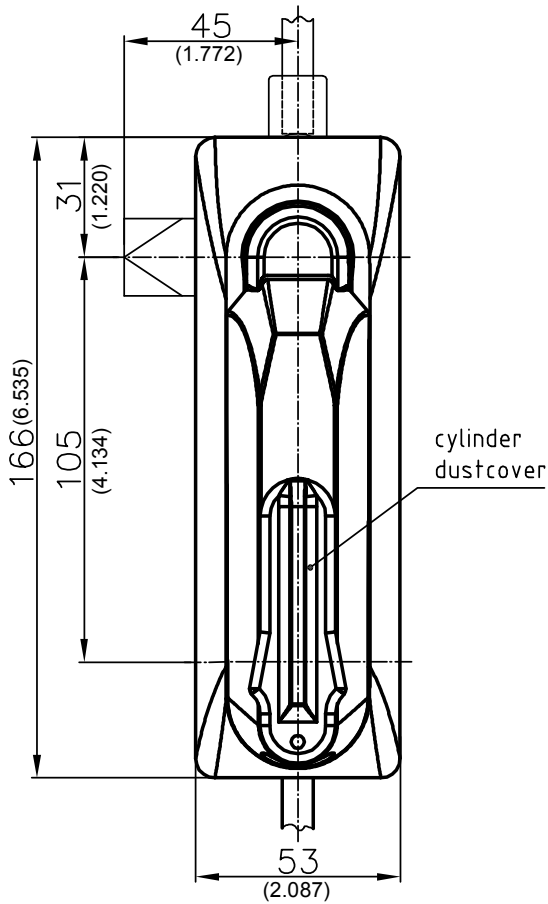


To use the same door both RH and LH, 2 holes $\square 46$, symmetrical to door centre, are possible, see g) and g1).

	Part No.	see page
a) Swinghandle 105	207-9129	
b) 3-point-cam e.g. for bending	A20 207-9522	03.45
	A26 207-9528	
b1) 2-point-cam	207-9599	
c) Round rods		02.97, 02.98
d) Adapter for round rods		02.103, 02.102
e) Rod guide for bending A20	A20 200-3601.03	02.99, 02.101
Rod guide for bending A26	A26 200-3602.03	
f) Profile-cylinder according DIN 18252		03.42
g) Square Adapter to allow installation into 2 holes $\square 46$. In this case the same door can be used RH or LH.	207-2702.03	
g1) External seal for Adapter $\square 46$	207-2803	

2-102 Swinghandle RS 105

for cutout 105, for round rods, security tested



When using 40 (1.575) and 45mm (1.772) long profile-cylinders only the lower hole is used for fixing!