

2-150 3-Point Cam

for swinghandle

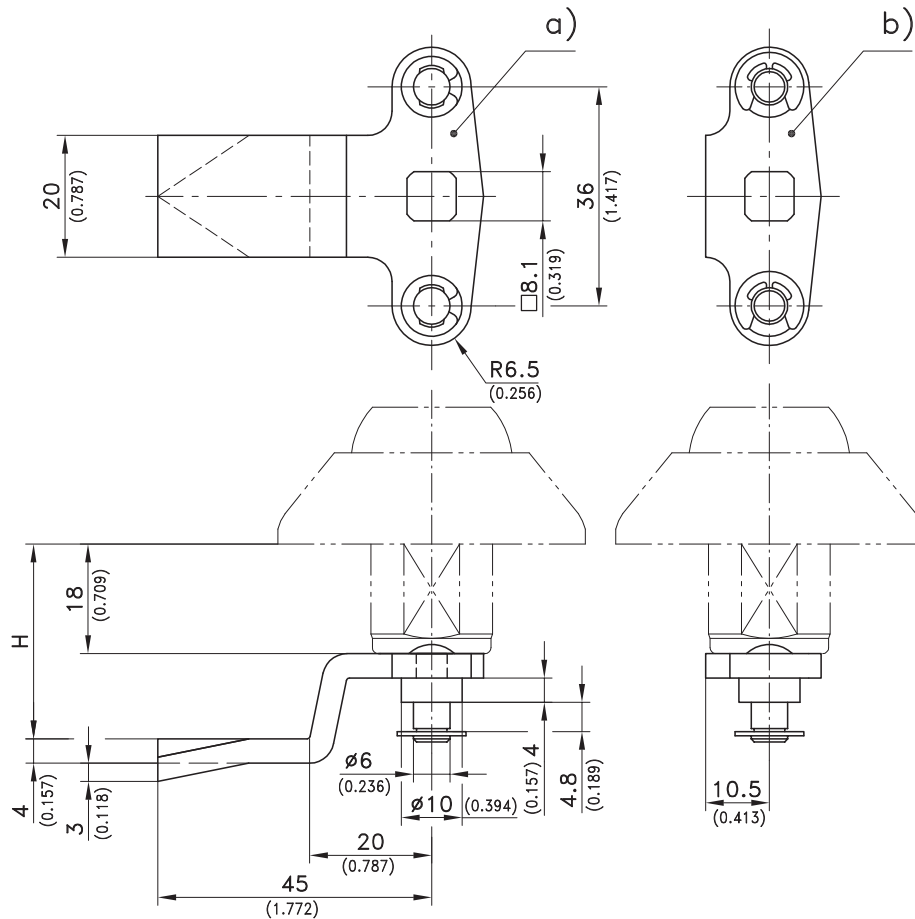


3-point cam, without 90° stop.

- For applications with Swinghandles.
- The 4mm high shoulder (Ø10) makes a straight rod (without bending) run over the internal dustcap of the swinghandle.

Material:

- **Cam:** steel, zinc plated



	H in mm / inch	Part No.	H in mm / inch	Part No.	see page
a)	4 / 0.157	207-9504*	28 / 1.102	207-9528	
	6 / 0.236	207-9506*	30 / 1.181	207-9530	
	8 / 0.315	207-9508*	32 / 1.260	207-9532	
	10 / 0.394	207-9510*	34 / 1.339	207-9534	
	13 / 0.512	207-9513*	35 / 1.378	207-9535	
	14 / 0.551	207-9514*	36 / 1.417	207-9536	
	16 / 0.630	207-9516	38 / 1.496	207-9538	
	18 / 0.709	207-9518	40 / 1.575	207-9540	
	20 / 0.787	207-9520	42 / 1.654	207-9542	
	22 / 0.866	207-9522	44 / 1.732	207-9544*	
	24 / 0.945	207-9524	45 / 1.772	207-9545*	
	25 / 0.984	207-9525	47 / 1.850	207-9547*	
	26 / 1.024	207-9526	50 / 1.969	207-9550*	
* Only on request					
2 c-clips are included					
for alternative solutions					03.46
b)	2-point-cam		207-9599		
c)	Hooked cam		200-1701		02.81
			200-1703		
d)	Round rods				02.97, 02.98