

2-126.01 Dual Cylinder Swinghandle RS 105

for cutout 105, for round rods, security tested

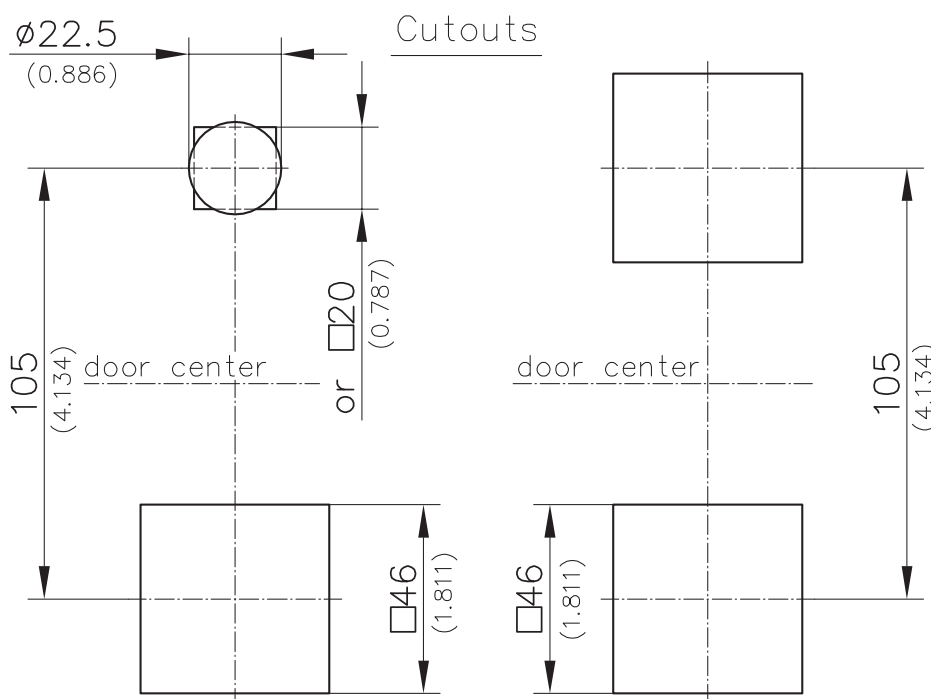


Dual Cylinder Swinghandle completely zinc die.

- Water- and dust-tight according to IP65 DIN EN 60529.
- The dual cylinder 40 and or 45mm allows opening by either cylinder, without unlocking the other one.
- The dual cylinder allows opening by either cylinder, without unlocking the other one. The profile-cylinders can have a length of 40 or 45mm or be a mixture of both, but the cylinder cam must have a 45° feature.
- The handle can be locked without using a key.
- Complies with security test to DIN1630.
- Logo on handle on request.

Material:

- **Swinghandle and dish:** zinc die, ZL 0430, black
- **Other surfaces on request!** a), b) and d)
- **3- and 2-point cam and round rods:** steel, zinc plated e)
- **Adapter:** zinc die, zinc plated f)
- **Rod guide:** PA, black g)
- **Square adapter:** PA black g1)
- **Flat external seal:** sponge rubber, PUR h)
- **Emergency key:** PS, black



To use the same door both RH and LH, 2 holes $\square 46$, symmetrical to door center, are possible, see g) and g1).

	Part No.	see page
Dual cylinder swinghandle with cylinder dustcover for profile-cylinder	207-9614	
Optional:		
a) 3-point-cam e.g. for bending	A20 207-9522 A26 207-9528	03.45
b) 2-point-cam	207-9599	
c) Profile-cylinder according DIN 18252		03.42, 03.43
d) Round rods		02.97, 02.98
e) Adapter for round rods		02.103, 02.102
f) Rod guide for bending A20	A20 200-3601.03	02.99, 02.101
Rod guide for bending A26	A26 200-3602.03	
g) Square Adapter to allow installation into 2 holes $\square 46$. In this case the same door can be used RH or LH.	207-2702.03	
g1) External seal one sided self adhesive for Adapter $\square 46$	207-2803	
h) Emergency key	204-0301	

