

3-170 Rod Latch FS PrC

for cutout C, for flat rods

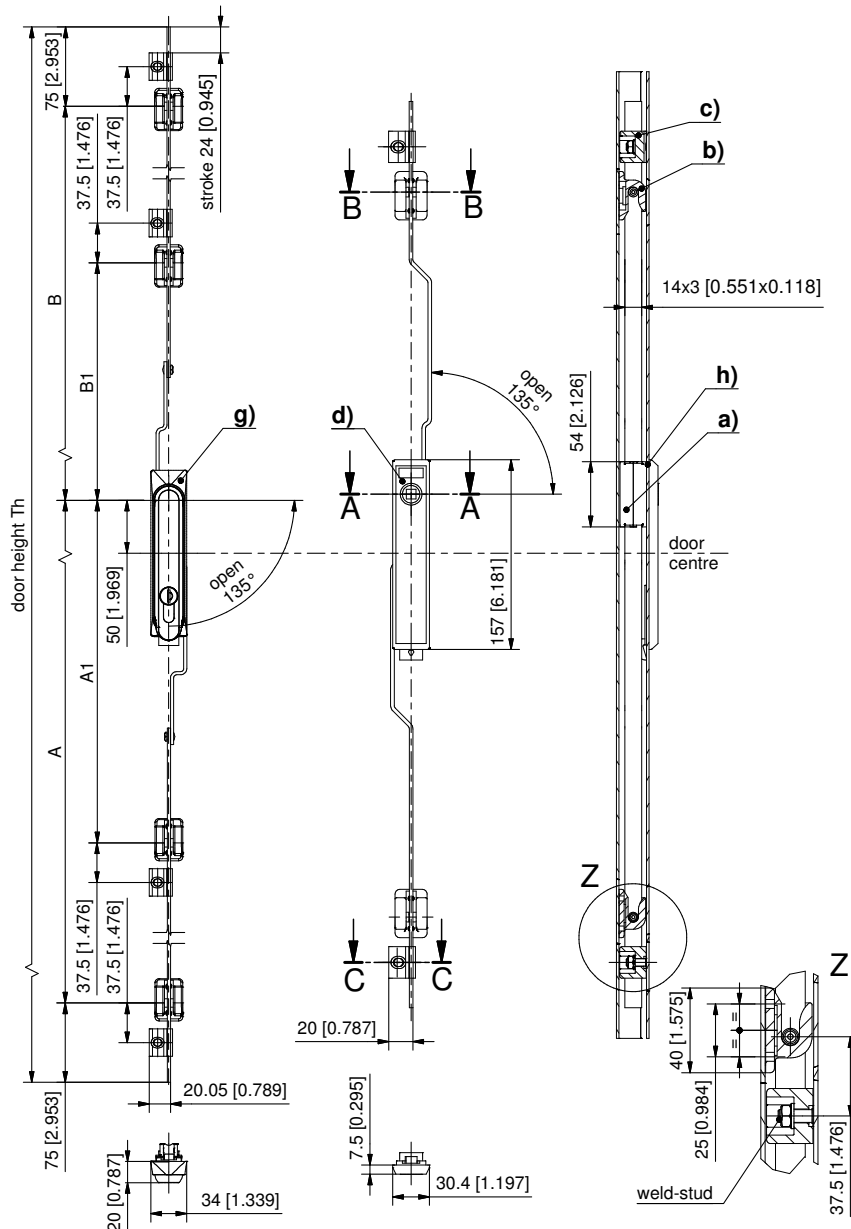


Rod Latch system for mounting into flange of door, outside the sealed area.

- Very smooth sealing compression and latching is achieved by brass dual roller catches with large ramp. The dual rollers are mounted onto Flat Rods size 14x3mm (0.551x0.118).
- RH and LH application through double symmetry.
- The direction of opening, which depends on the type of handle / insert, can be changed by rotating the central Rod Latch which has double symmetry.
- Detailed dimensions of the cutout PrC see product system 3-010.

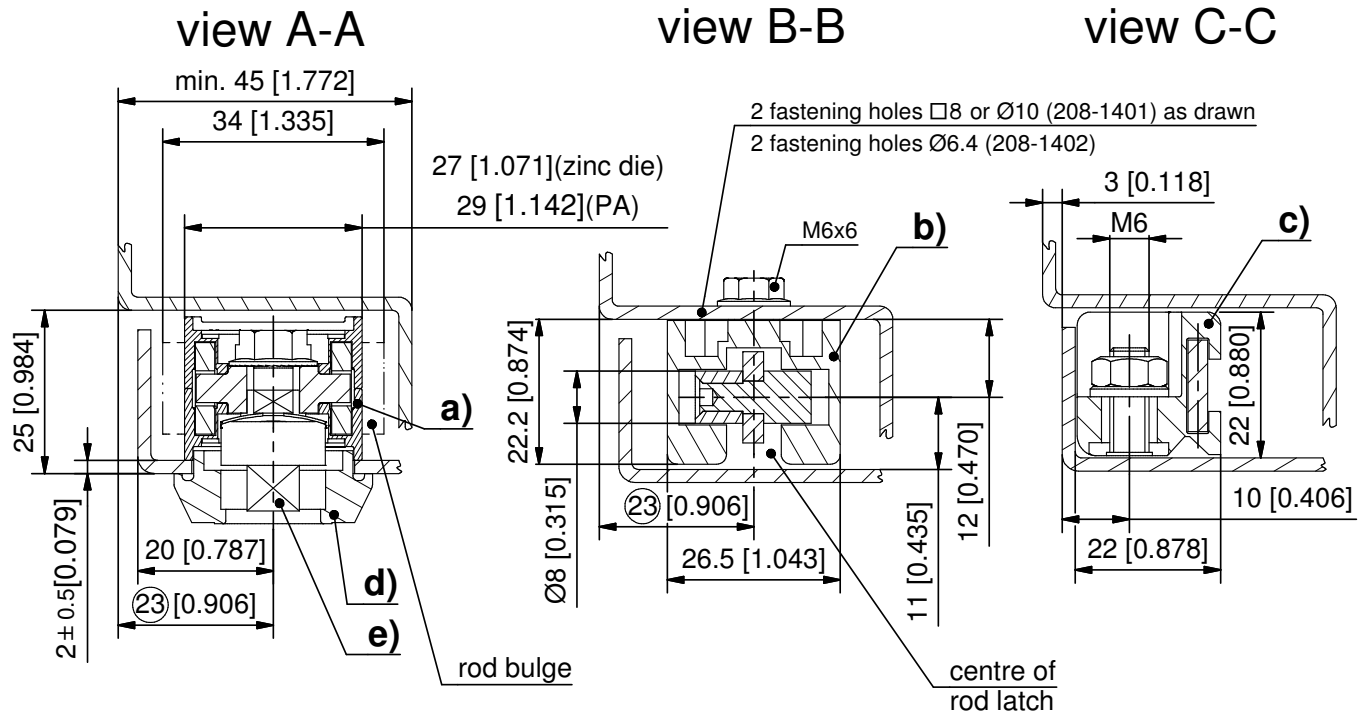
Material:

- a) and a1)
- **Rod latch:** zinc die
- **Dual rollers:** brass
- b) and b1)
- **Dual hook:** zinc die
- b2)
- **Dual hook:** PA, black
- c) and c2)
- **Rod guide:** PA, black
- c1)
- **Rod guide:** zinc die
- d), d1), d2) and d3)
- **Escutcheon:** PA, black
- e)
- **Insert:** zinc die, chrome plated
- f)
- **Handles:** PA, black, zinc die, untreated
- g), g1) and g2)
- **Swinghandle and dish:** PA, black
- h)
- **Grounding clip:** stainless steel
- AISI 301



3-170 Rod Latch FS PrC

for cutout C, for flat rods



a) Rod Latch*, one piece complete with rods and dual rollers		for door height					distance		Number	
		dual rollers								
		Th	A	A1	B	B1				
208-9101		800-1200	350	-	250	-	2			
208-9102		1200-1600	500	-	400	-	2			
a1) Rod Latch*	+	Quick-fit rods with 2 rollers								
order 1 off		order 2 off								
208-9003	+	208-9801	1600-1900	750	325	650	225	4		
208-9003	+	208-9802	1900-2200	900	325	800	225	4		

*Part-Number for rod latches with PA housing on request!

Please order separately:

b) Dual Roller catch with M6 threaded stubs, screws from inside	208-1401	04.44, 04.45
b1) Dual Roller catch countersunk M6 for screws from outside	208-1402	04.44, 04.45
b2) Dual hook for flat rods	208-1446.50	04.48
c) Rod guide, please order 2 pcs. per rod	208-1501.03	04.44, 04.45
c1) Rod guide, two halves order 4 pcs. per rod	208-1502.34	04.44, 04.45
c2) Rod Guide for flat rods for quick installation	208-1523.54*	04.47

ATTENTION: When using this rod guide, the welded stud must be moved inwards by 2mm.

Escutcheon with 2 screws for insert

d) for square/triangular and Daimler Benz	208-9501	
d1) for double bit	208-9502	
d2) for FIAT type	208-9503	
d3) Escutcheon SOFTLINE for inserts		04.08
e) Inserts		04.26, 04.27
f) Handles		04.25
g) Swinghandle (PA, black) dish with hook (not IP65) see a4, f1) and f3)		04.20, 04.21
g1) Swinghandle (PA, black) dish with hook (not IP65) see b)		04.23
g2) Swinghandle (PA, black) dish with hook (not IP65) see b), b1), d1) and e1)		04.18, 04.19
h) Grounding clip, see product system 3-011	208-1206.93-00000	