

# 5-152 Clip-on Sealing Profiles

EPDM



Clip-on sealing profiles extend the properties of edge protection profiles to include sealing.

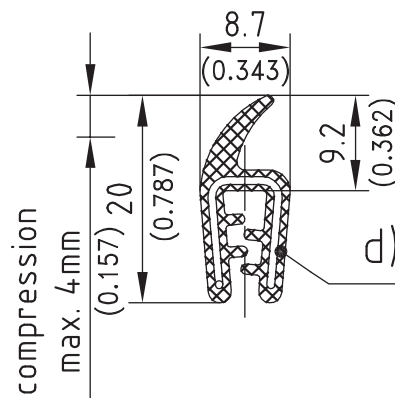
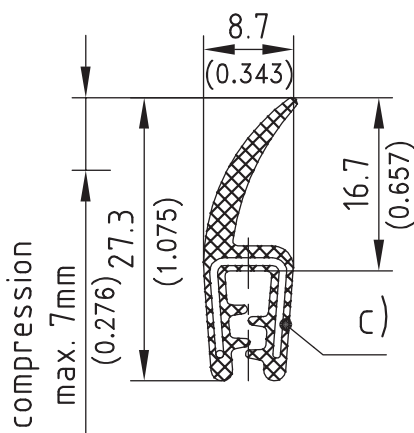
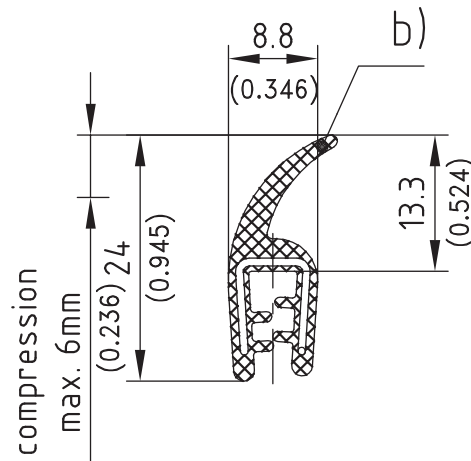
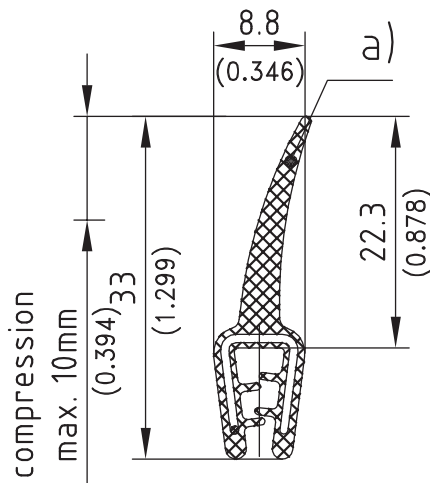
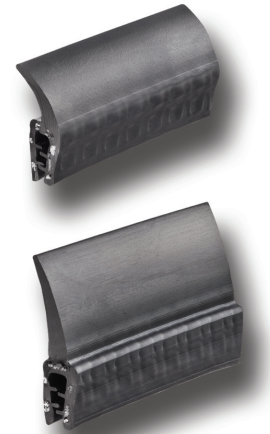
- Clip-on sealing.
- The sealing part of these profiles is made of sponge rubber and the clamp area consists of soft rubber with a steel clip-on core.
- In an extrusion process the two materials are bonded to each other through vulcanization.
- Tested according to UL Standards.

**Customized designs:**

- If the cross-sections shown here are not suitable for your specific application, we can produce a customized profile to meet your needs.
- Sealing Profile also available in UL tested material (UL94 HB).

**Material:**

- **Clip-on profiles:** EPDM
- **Carrier:** soft rubber
- **Sealing part:** Sponge rubber



Material	color	clamping range	packaging unit	Part No.	UL (UR)
a) EPDM, soft- / sponge rubber	black	1.0 - 2.5mm	50m	209-0219	*
b) EPDM, soft- / sponge rubber	black	1.0 - 2.5mm	50m	209-0221	
c) EPDM, soft- / sponge rubber	black	1.0 - 3.0mm	50m	209-0237	
d) EPDM, soft- / sponge rubber	black	1.0 - 2.0mm	50m	209-0239	