

5-171 Radius Adapter

for clip-on sealing profiles



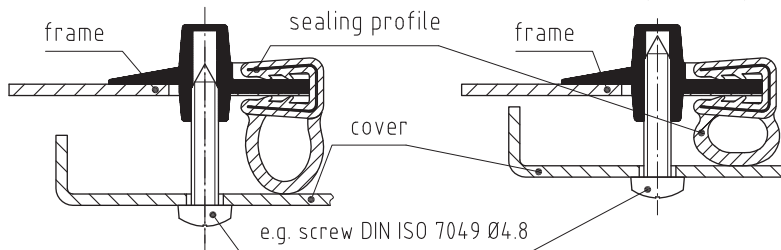
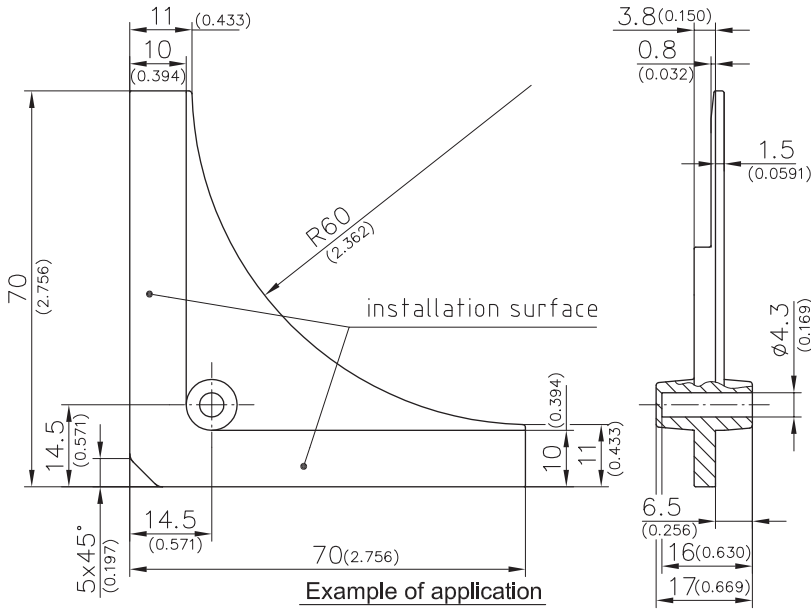
Radius Adapter simplifies installation for clip-on sealings by creating a radius within 90° inside corners.

- The Radius Adapter is easily installed and kept in position at the flange of the housing by the clip-on U-part of the sealing profile.
- No welding and grinding of junction plates due to the corner radius.

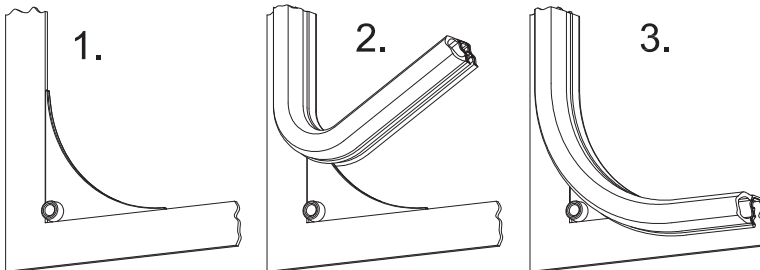
- Just put the Radius Adapter into the angle (after the painting process) and fix with the U-shape carrier of the profile.
- Housing covers can be screwed to the frame at low cost using the integrated device for selftapping screw.

Material:

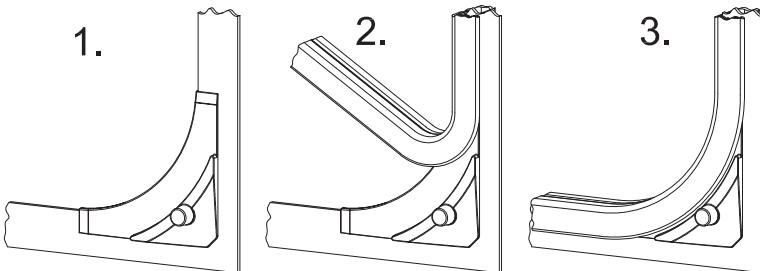
- **Radius Adapter:** PA6 30GF, black



Installation process. View from the outside.



Installation process. View from the inside.



Radius adapter	Part No. 209-4204.52-00000
-----------------------	---------------------------------------------