

# 4-182.05 Hinge Pr05 180°

Lift-off, for adjacent cabinets, door bending 25mm, for surface mounted door



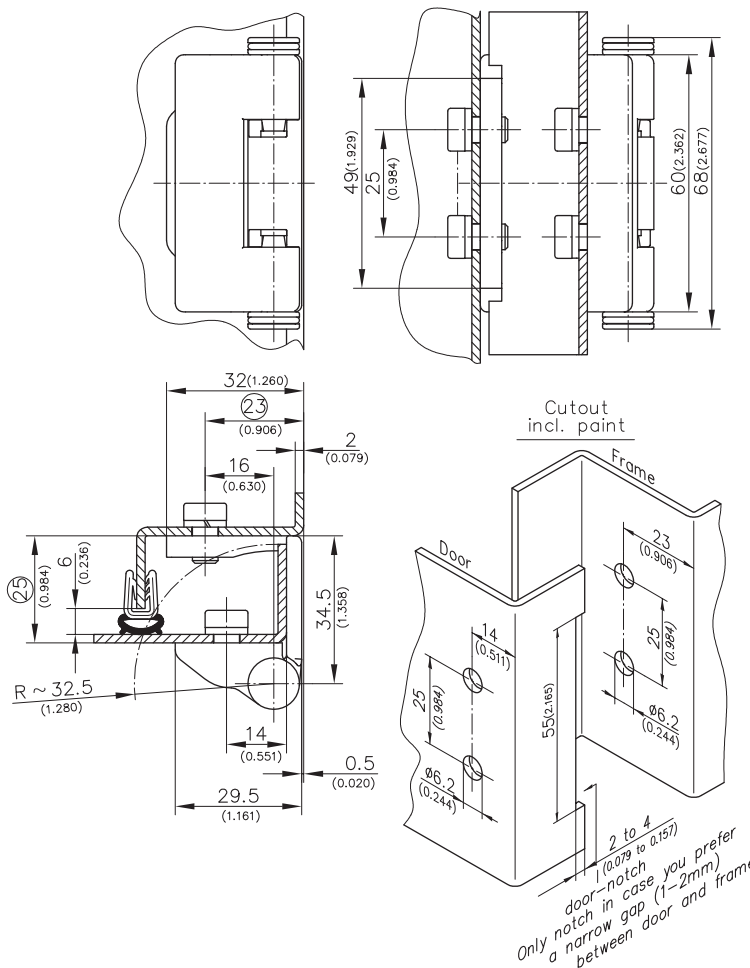
180° Hinge, door is lift-off.

- Fitting from inside and outside.
- RH or LH application.
- The installation of the door-part, with already pre-fitted pin-halves, is achieved by a simple push into the appropriate cutout.
- To merge the door-part and the frame-part at about 30° door opening, enter the door-part into the matching openings in the frame-part. Close the door and fully push the pin-halves towards each other.

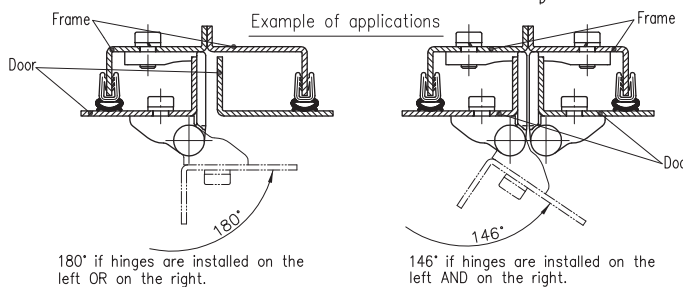
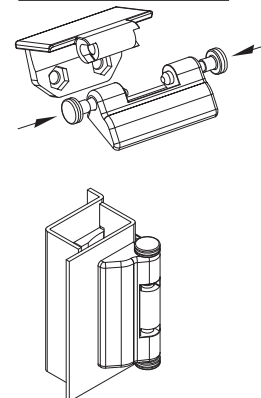
- After retracting the pin-halves, the door can be pulled out horizontally at about 30° door opening.
- Special wire springs, fitted into the door-part, make the pin-halves captive and the pin-halves have a detent in both positions.
- Frame holes layout is also suitable for mounting dual hooks as on product system 3-170 or 3-910 shown allowing reversibility of door.

### Material:

- **Frame-part, door-part and pin:** zinc die, black coated
- **Detent spring:** spring steel



Assembling situation



### Hinge 180°

Hinges are supplied including 4 hex. socket screws M6x10 DIN 7984, 4 washers 6 DIN 7980 and 2 nuts M6 DIN 439.

Part No.  
212-9085