

# 6-140 Bridge Clamp

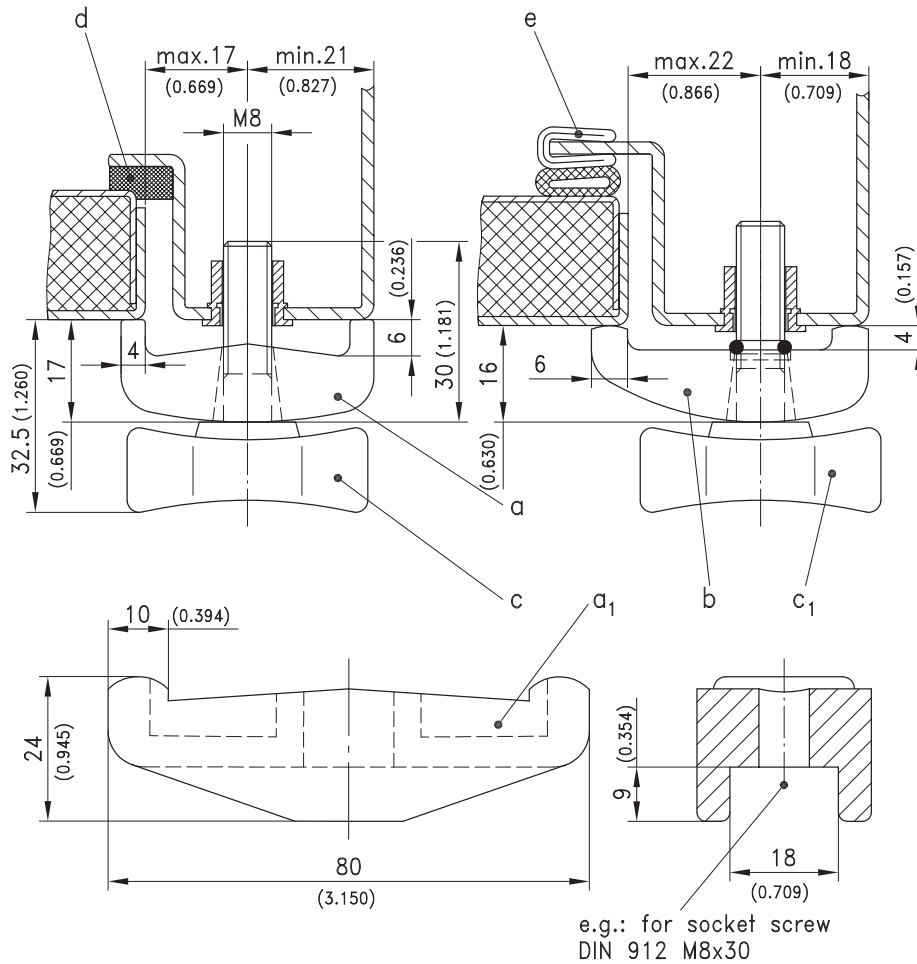
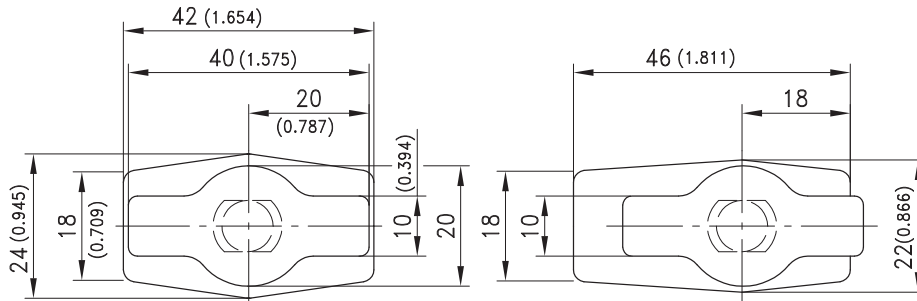


Bridge clamp with large adjustment for machine doors.

- to c1) O-ring for opening positioning of the bridge.
- Not for application with clamp a1).

### Material:

- **Bridge clamp and tommy screw:**  
PA, black



version	Part No.	see page
a) Bridge symmetrical	214-0101.03	
a1) Bridge symmetric and reinforced for clamping two doors / panels	214-0103.03	
b) Bridge asymmetrical	214-0102	
c) Tommy screw	214-0201.03	
c1) Tommy screw with O-ring	214-9001	
d) e.g. Rectangular Profiles		07.11
e) e.g. Groove Gasket	209-0202	07.20