

4-120 Concealed Hinge Pr03 120°

door bending 20mm, for surface mounted door

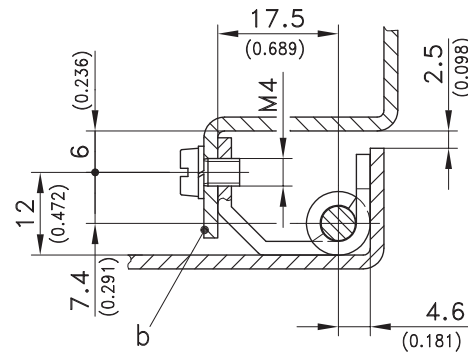
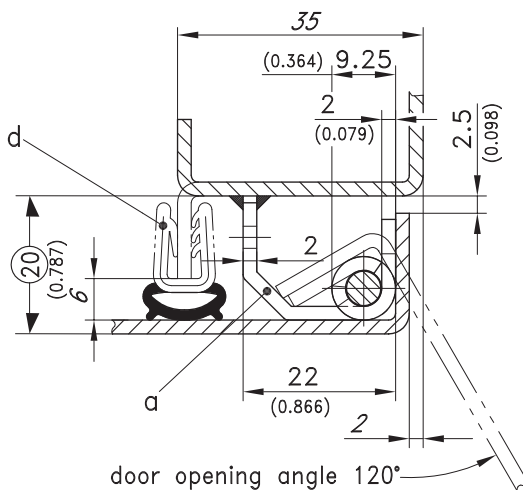
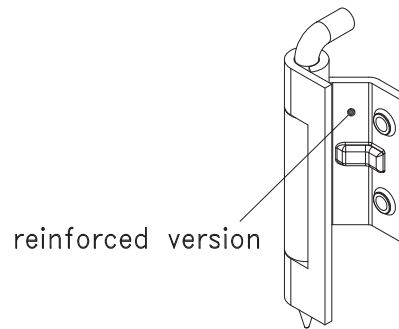
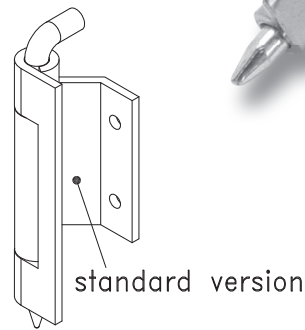
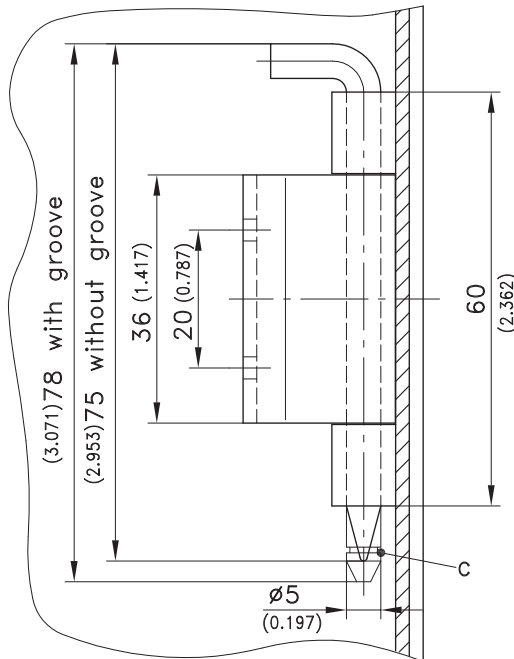


120° Concealed Hinge for surface mounted doors.

- RH or LH application.
- Frame-part weld-on or screw-on.

Material:

- a) and a1)
- **Frame-part and door-part:** steel, untreated
- b) and b1)
- **Frame-part:** steel, zinc plated
- **Door-part:** steel, untreated
- to a), a1), b) and b1)
- **Pins:** steel, zinc plated



	Part No. standard version	Part No. reinforced version	see page
a) Hinge assembly, weld-on, pin without groove	216-9001	216-9020	
a1) as a), but pin with groove for retaining ring	216-9009	216-9018	
b) Hinge assembly, screw-on, pin without groove	216-9002	216-9021	
b1) as b), but pin with groove for retaining ring	216-9010	216-9019	
Please order separately:			
c) Retaining ring DIN 6799 RS4 for pin with groove	800-0137	800-0137	
Stainless steel version			10.67
d) e.g. Clip-on profile	209-0201	209-0201	07.19