

# 4-122 Concealed Hinge Pr03 120°

door bending 20mm, for surface mounted door

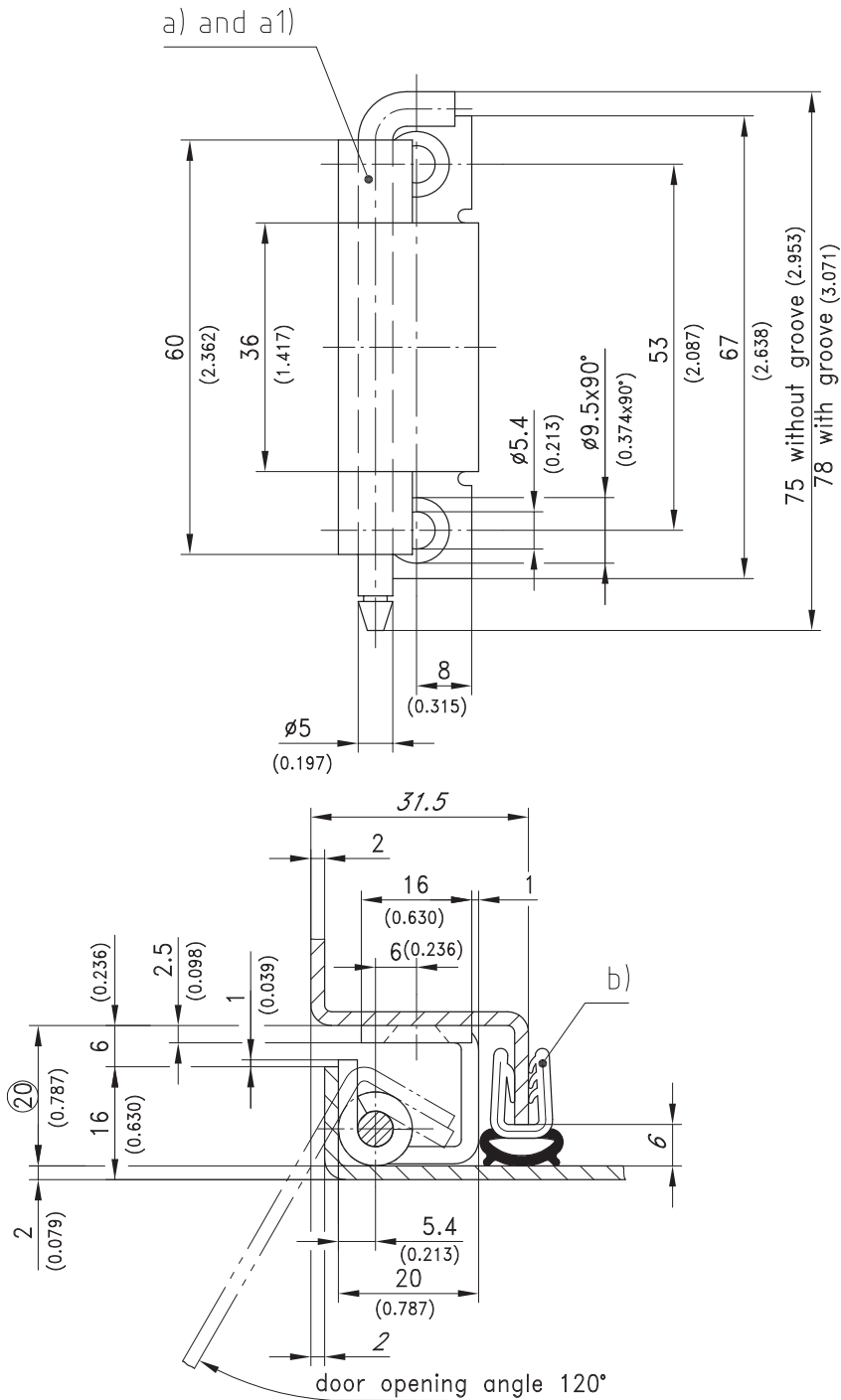
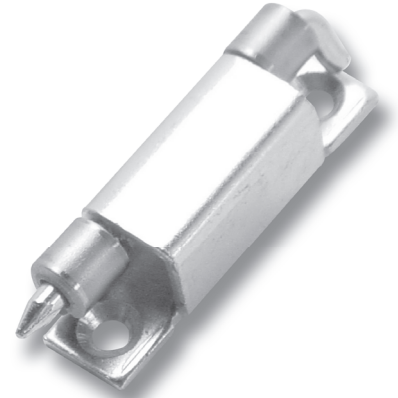


120° Concealed Hinge for surface mounted door.

- RH or LH application.

**Material:**

- **Frame-part:** steel, zinc plated
- **Door-part:** steel, untreated
- **Pin:** steel, zinc plated



120° Concealed Hinge		Part No.	see page
a)	Pin without groove	216-9005	
a1)	Pin with groove (incl. c-clip)	216-9022	
Stainless steel version			10.68
b)	e.g. Clip-on profile	209-0201	07.19