

4-118 Concealed Hinge Pr03 125°

door bending 20mm, for surface mounted door

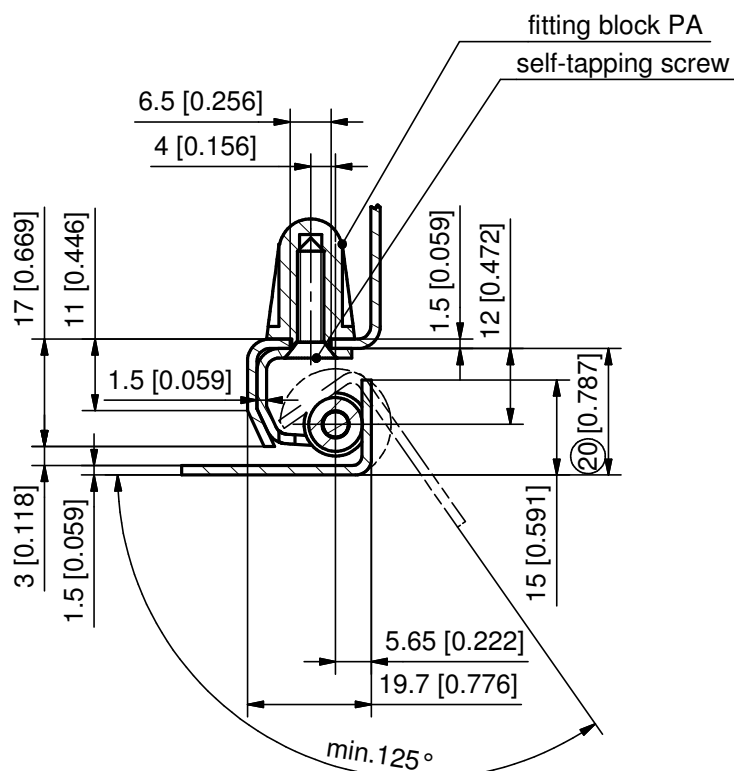
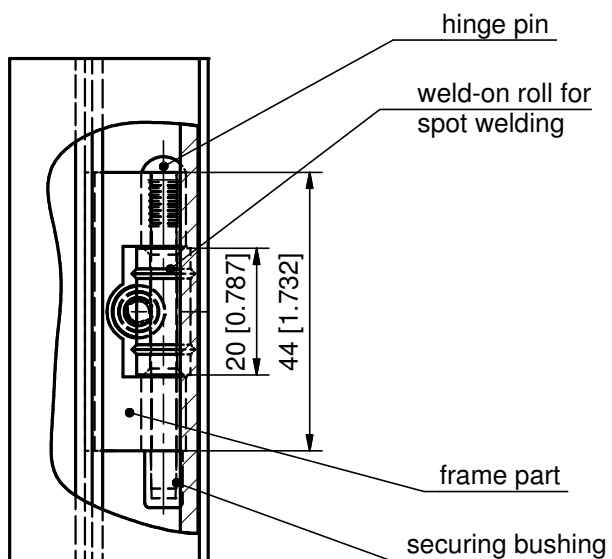
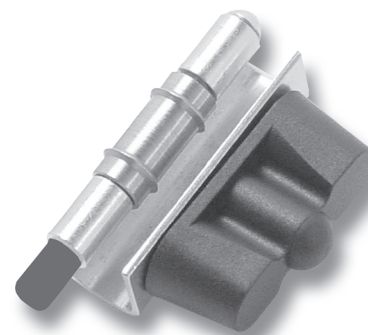


Concealed Hinge with secured hinge pin.

- 125° Opening angle.
- RH or LH application.
- Door bending variable from 18 to 20mm.
- Fitting block screw on.

Material:

- **Frame part and hinge pin:** steel, zinc plated
- **Weld-on roll:** steel, untreated
- **Fitting block:** PA, black
- **Securing bushing:** PE-LD black
- **Self-tapping screw:** stainless steel



	Part No.	see page
Concealed Hinge with screw Philips DIN 7982 ISO 7050 4.2x19mm	216-9015	
Concealed Hinge with screw T-20 ISO 14586 form C 4.2x19mm	216-9035	
Stainless steel version		10.75