

# 7-140 Concealed Hinge Pr03 120°

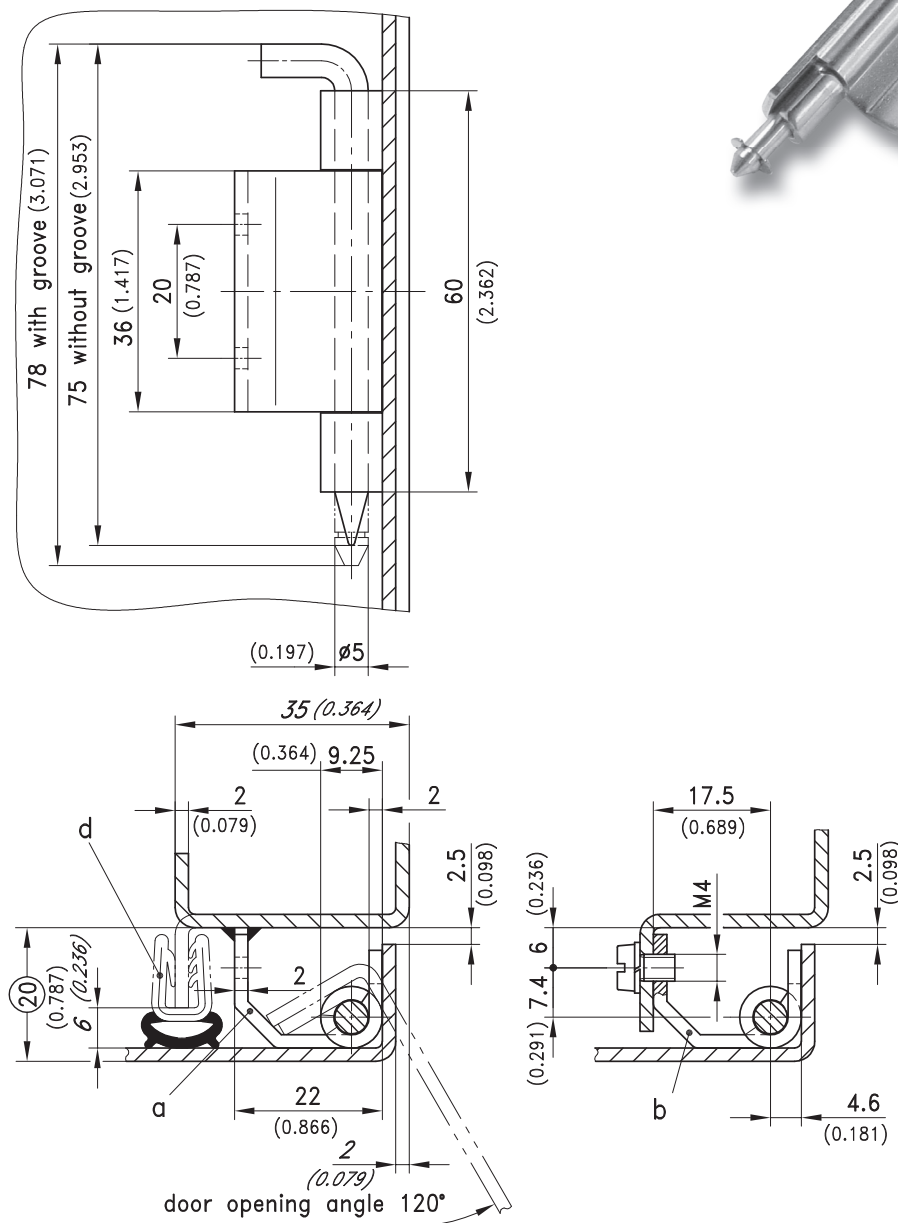
door bending 20mm, for surface mounted door, stainless steel AISI 304/316L



120° Concealed hinge for surface mounted door.  
 • RH or LH application.

### Material:

- **Hinge parts:** stainless steel AISI 304 or 316L
- **Pin:** stainless steel AISI 303 or 316L



version	Material Hinge Parts	Material Pin	Part No.	see page
a) Hinge, weld-on, pin without groove	AISI 304	AISI 303	216-9101	
a1) as a), but pin with groove for retaining ring	AISI 304	AISI 303	216-9109	
b) Hinge, screw-on, pin without groove	AISI 304	AISI 303	216-9102	
b1) as b), but pin with groove for retaining ring	AISI 304	AISI 303	216-9110	
b2) as b1)	AISI 316L	AISI 316L	216-9121*	
<b>Optional:</b>				
c) Retaining ring DIN 6799 RS4 for versions a1), b1) and b2)			800-0138	
d) e.g. Clip-on profile			209-0201	07.19
* Only on request				