

# 7-138 Concealed Hinge Pr03 125°

door bending 20mm, for surface mounted door, stainless steel AISI 304

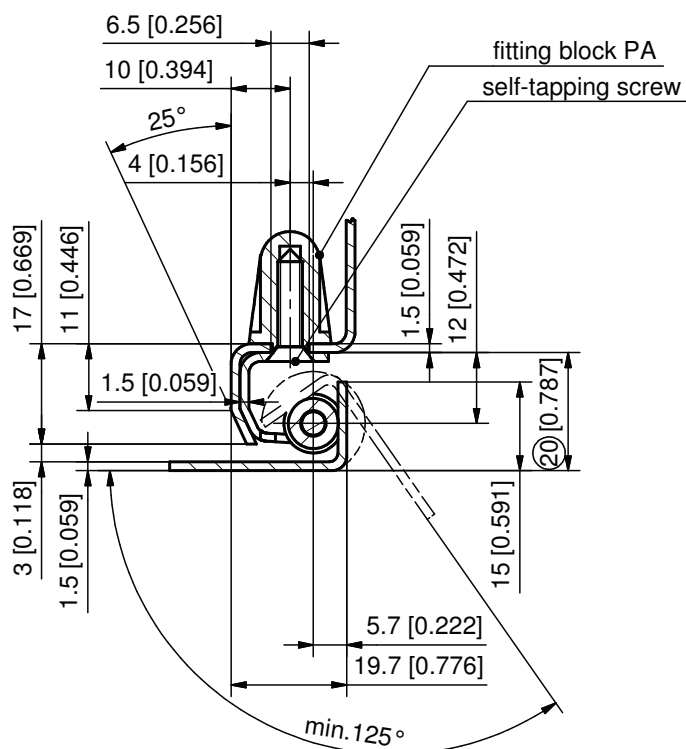
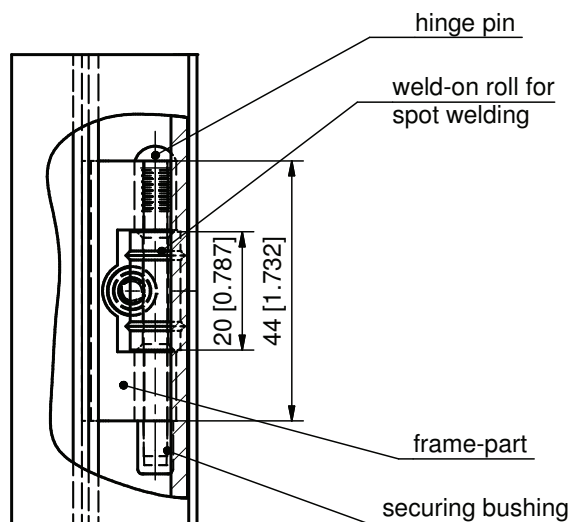
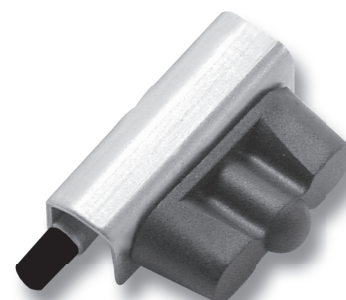


Concealed Hinge with opening angle 125°.

- RH or LH application.
- Opening angle 125°.
- Door bending from 18 to 20mm.
- Hinge block can be screwed on.

**Material:**

- **Frame-part:** stainless steel AISI 304
- **Pin:** stainless steel AISI 301
- **Weld-on roll for spot welding:** stainless steel AISI 303
- **Fitting block:** PA6, black
- **Securing bushing:** PE-LD black
- **Self-tapping screw:** stainless steel



|   | Part No. | see page |
|---|----------|----------|
| Concealed Hinge with screw Philips DIN 7982 ISO 7050 4.2x19mm | 216-9113 |          |
| Concealed Hinge with screw T-20 ISO 14586 form C 4.2x19mm     | 216-9128 |          |
| Concealed hinge in steel                                      |          | 06.82    |