

4-340 Hinge Pr01 180°

for nested door, with PA bushings

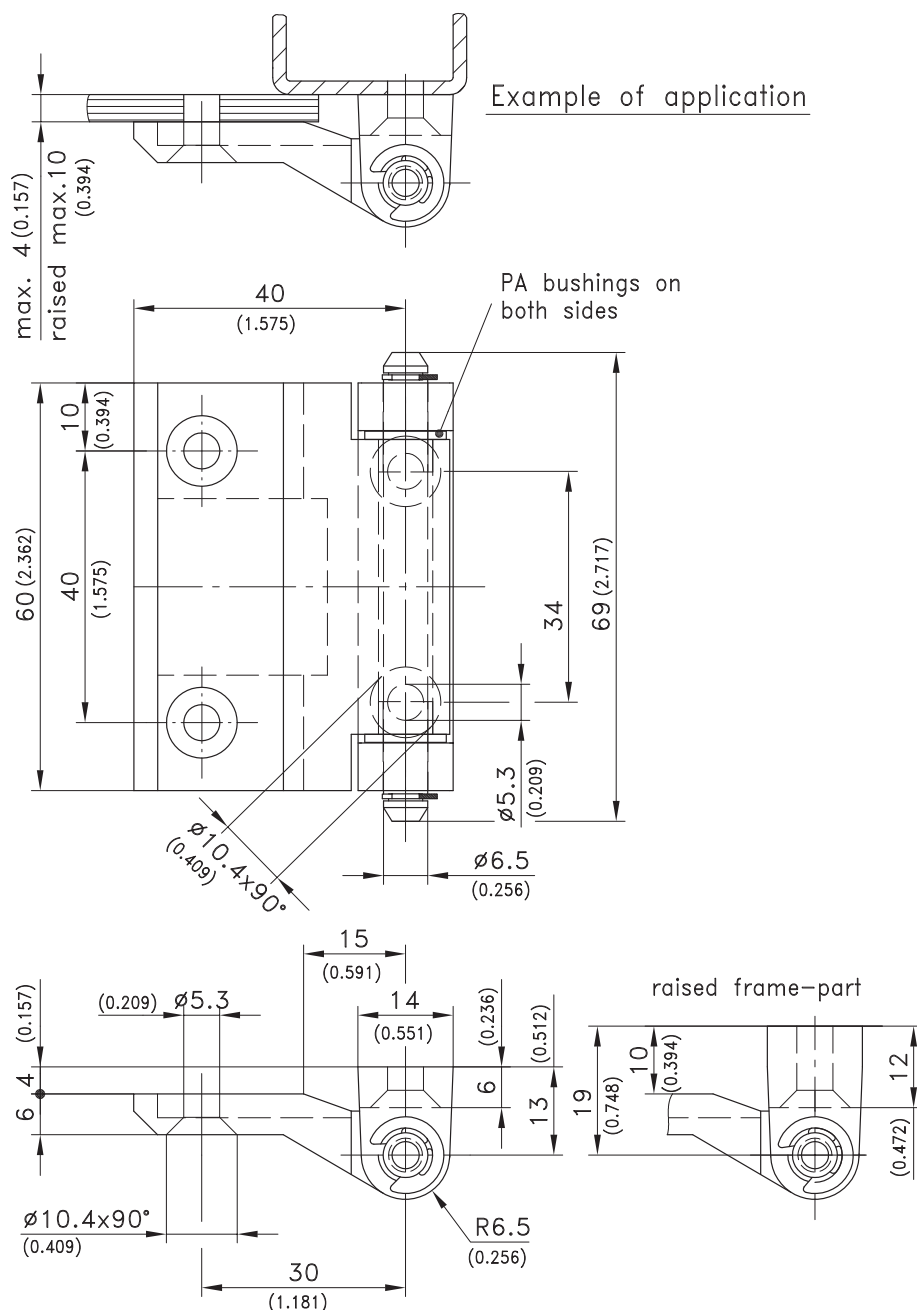


180° Hinge with PA bushings.

- 180° Opening angle.

Material:

- **Hinge halves:** zinc die, chrome plated or black coated
- **Pin:** stainless steel or steel, zinc plated
- **Bushings:** PA, natural



version	Standard frame-part chrome plated	Standard frame-part black	Raised frame-part chrome plated	Raised frame-part black	see page
Hinge with PA bushings					
Pin: steel, zinc plated	217-9111	217-9105	217-9118	217-9107	
Pin: stainless steel	217-9112	217-9106	217-9119	217-9108	
Countersunk machine screws zinc plated					09.05