

4-350 Hinge Pr01 180°

adjustable for nested door

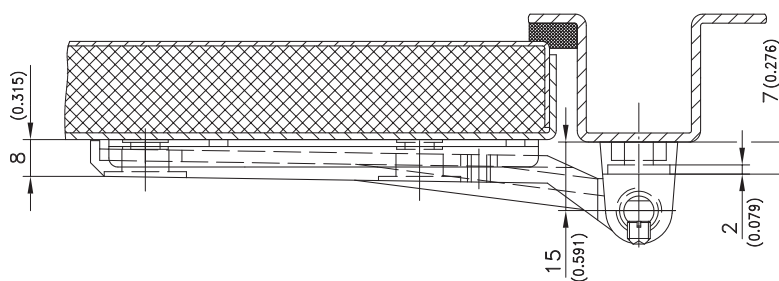
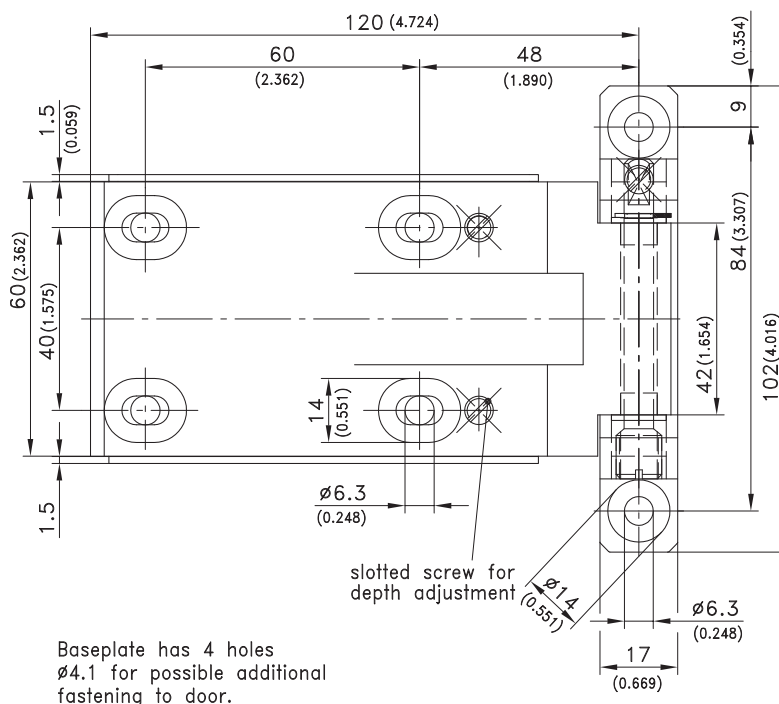
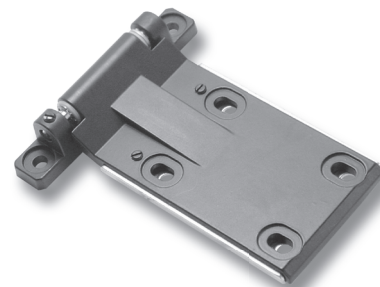


3D Hinge adjustable for nested/flush doors.

Adjustable in :
height ±2mm (0.079)
width ±2mm (0.079)
depth ±2mm (0.079)

Material:

- **Frame-part and middel-part:** zinc die, untreated (zinc colored) or black
- **Base-plate:** steel, zinc plated
- **Bushings:** PA, natural
- **Shaft:** brass, untreated or stainless steel
- **Washers:** stainless steel
- **Slotted screw:** steel, zinc plated or stainless steel
- ***Base plate:** steel, black
- **Shaft:** stainless steel



version	surface untreated (zinc finish)	surface black
3 D hinge with shaft, brass, untreated		
RH version (as drawn)	217-9402	217-9405
LH version (mirror view)	217-9403	217-9406
Not assembled for RH and LH	217-9404	217-9407
3 D hinge with shaft, stainless steel*		
RH version (as drawn)	217-9408	217-9411
LH version (mirror view)	217-9409	217-9412
Not assembled for RH and LH	217-9410	217-9413