

4-270 Hinge Pr01 270°

60x60mm, for nested door

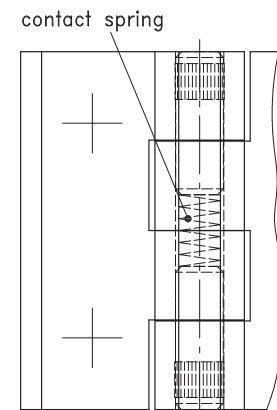
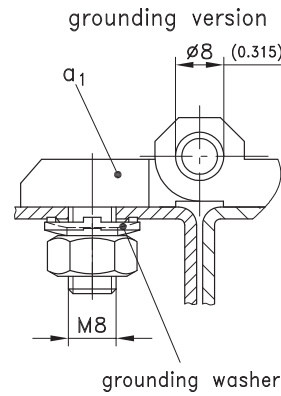
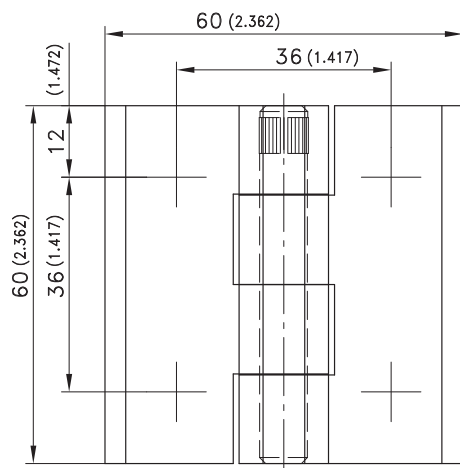
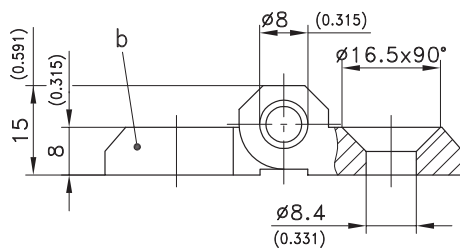
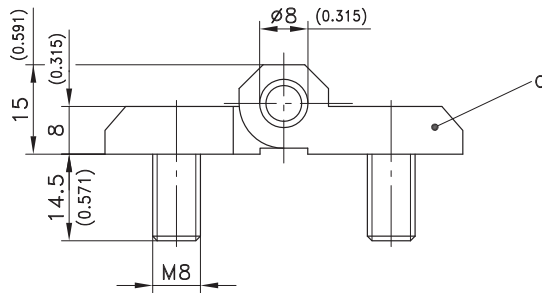
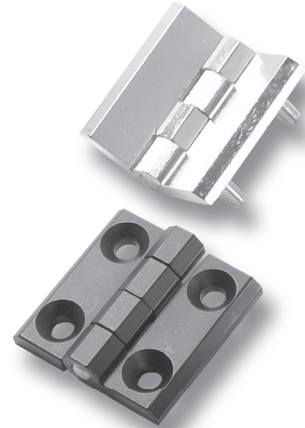


Screw-on Hinge with or without grounding.

- RH or LH application.
- 180° Opening angle, version b) 270°.
- Combination of versions a) and b) on request.

Material:

- **Hinge halves:** zinc die, chrome plated or black
- **Pin and molded in screws:** stainless steel
- **Grounding washer:** steel, zinc plated
- **Spring:** spring steel



grounding version
limited current passage

version	chrome plated	black	see page
a) Hinge with screws M8 molded in	218-9201	218-9202	
a1) with screws M8 molded in, grounding version	-	218-9422	
b) with countersunk holes for M8	218-9203	218-9204	
Grounding washer for a1), 4 pieces	861-0146.07-00008	861-0146.07-00008	

Version b) in stainless steel	10.56
Countersunk machine screws zinc plated	09.05