

4-274 Hinge Pr01 270°

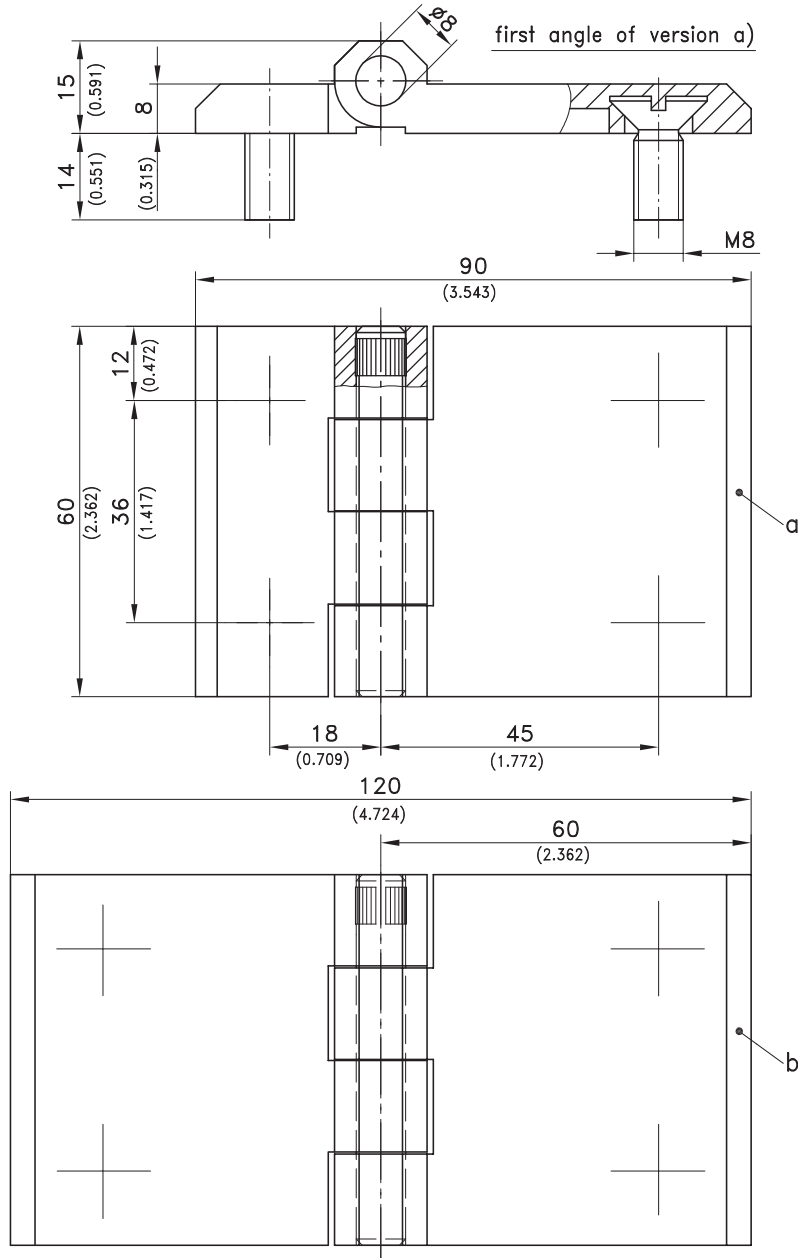
for nested door



- 270 ° screw-on Hinge.
- RH or LH application.
 - 270° Opening angle.

Material:

- a) and b)
- **Hinge halves:** zinc die, chrome plated or black coated
- **Pin:** stainless steel



| version | zinc die, chrome plated | zinc die, black | see page |
|---|-------------------------|-----------------|--------------|
| a) with different hinge half lengths | 218-9209 | 218-9210 | 06.29, 06.31 |
| The short hinge half length is also available with countersunk holes. | | | |
| b) with identical hinge half lengths | 218-9211 | 218-9212 | |