

7-200 Hinge Pr01 270°

for nested door, stainless steel AISI 316



Screw-on hinge for HD-application.

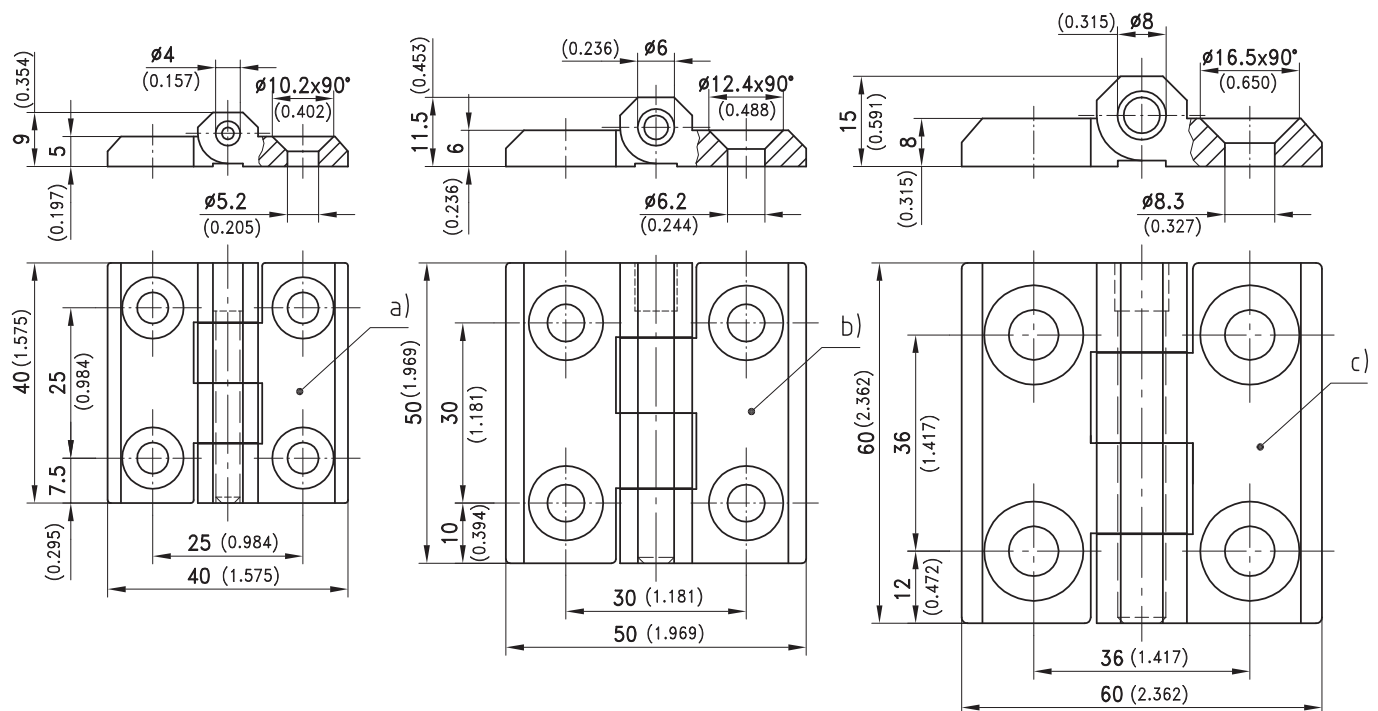
- RH or LH application.
- Opening angle 270°.
- For countersunk screws M5, M6 or M8 to DIN 7991.
- The surface of the hinge is satin polished.
- Welded hinge pin.

Advantages:

- Nice visual appearance by closed pin hole on one side.
- Vibration-proof.
- Vandalism safety.

Material:

- Hinge parts and pin: stainless steel AISI 316



Hinge	Part No.
a) 40x40x9	218-9301
b) 50x50x11.5	218-9302
c) 60x60x15	218-9303