

# 1-056 Quarter-Turn with Wing Pr14.1 L13.5

for cutout 14.1, length 13.5, with cylinder

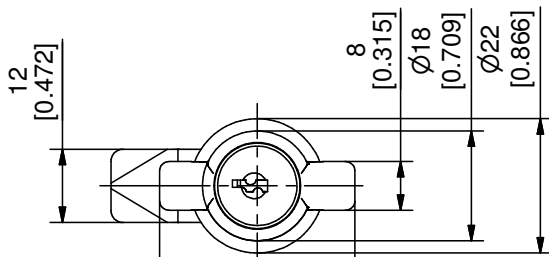
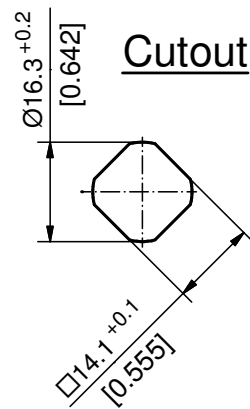
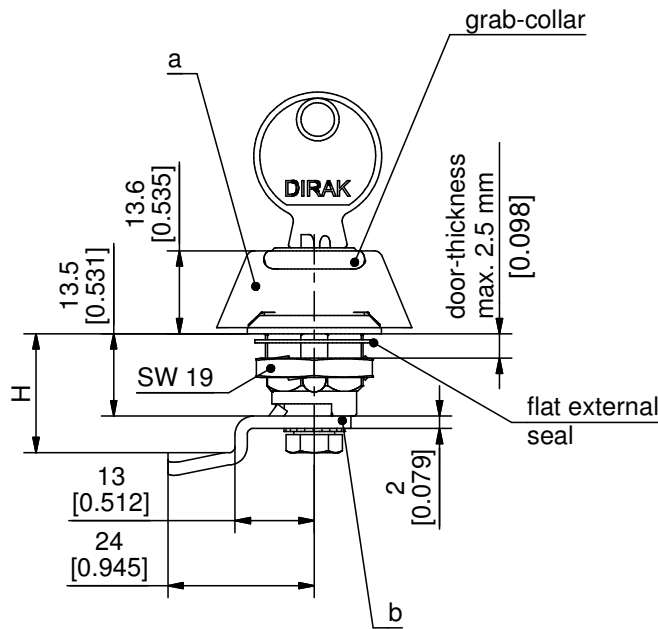
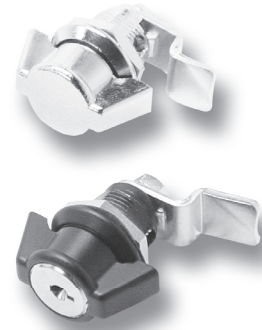


Wing Quarter-Turn with 90° rotation, RH or LH application.

- The Quarter-Turn consists of two basic components which can be combined to suit your application.
- A pre-assembled Quarter-Turn can be installed in the cutout.

**Material:**

- a) **Wing handle and housing:** zinc die, black or chrome plated
- b) **Cam:** steel, zinc plated



a) Wing Quarter-Turn with housing	chrome plated		surface black		see page
	screw and flat external seal	with nut	with grounding nut	with nut	
non locking	220-9301	220-9302	220-9302	220-9307	220-9308
keyed alike DIRAK 2233X	220-9303	220-9304	220-9304	220-9309	220-9310
keyed different/mixed	220-9305	220-9306	220-9306	220-9311	220-9312
b) Cam H in mm					
7.5	220-0503	220-0503	220-0503	220-0503	220-0503
13.5	220-0501	220-0501	220-0501	220-0501	220-0501
19.5	220-0502	220-0502	220-0502	220-0502	220-0502
Special cams					02.20
Optional:					
c) Assembling without O-ring	220-0001	220-0001	220-0001	220-0001	220-0001
Assembling cam 90° to handle	220-0004	220-0004	220-0004	220-0004	220-0004

All locks supplied with two keys.