

1-048 Quarter-Turn L13.5

length 13.5, with fixing clip



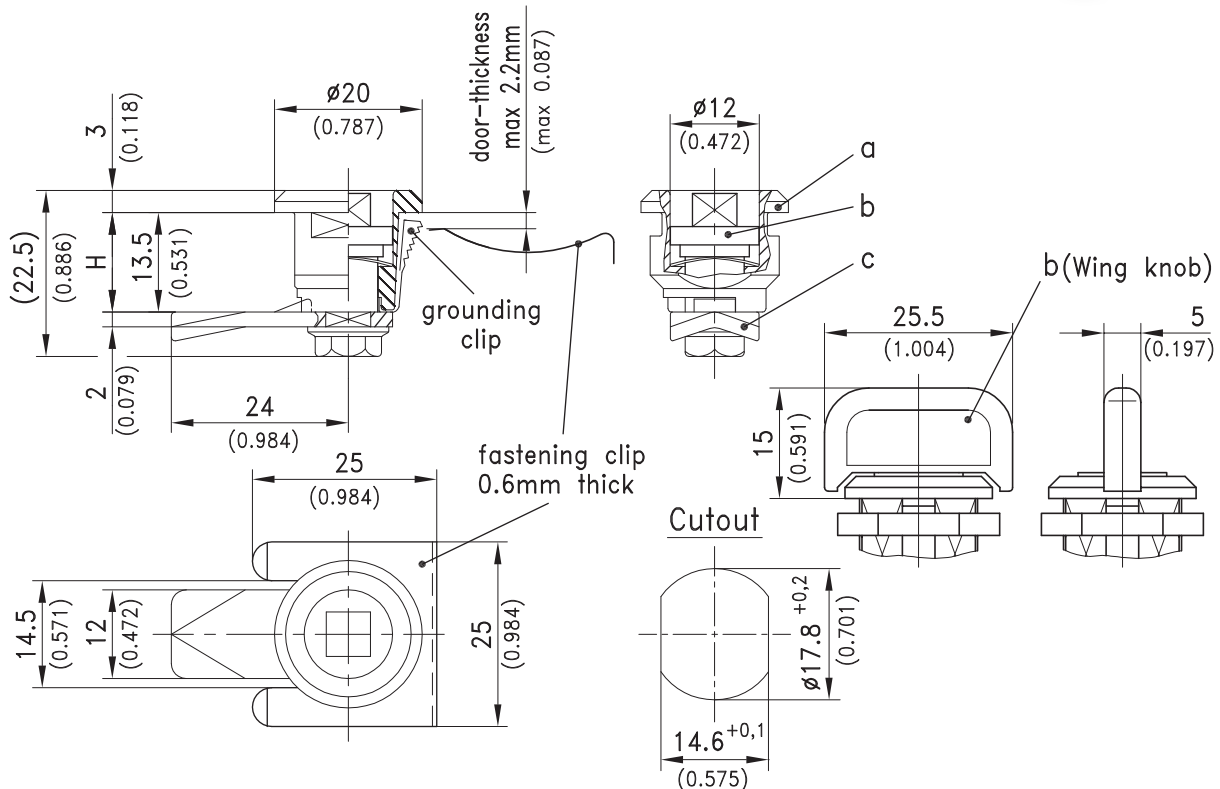
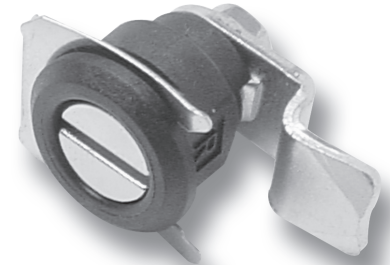
This Quarter-Turn consists of three basic parts which can be combined to suit your application.

- On request parts can be assembled by DIRAK.
- A pre-assembled Quarter-Turn can be installed in the cutout.
- Max. IP54.

Material:

- a)
- **Housing:** PA, black or zinc die, chrome plated
 - **Fixing clip:** steel, zinc plated
 - **Grounding clip:** stainless steel

- b)
- **Insert:** zinc die, chrome plated or black or combination of PA, black/ zinc die
 - **Screw and wave washer:** steel, zinc plated
 - **Key:** zinc die
- c)
- **Cam:** steel, zinc plated



a) Housing	PA black	zinc die, chrome plated	see page	
RH with fixing clip	220-9501	220-9013		
RH with fixing clip and grounding clip	220-9503	220-9007		
Attention: On LH doors the opening direction is clockwise, this is different to the description			02.09	
b) Insert	PA, black and zinc die	zinc die, chrome plated	zinc die, black	
with screw and wave washer			key (zinc die)	
Triangular 6.5mm	-	220-9101	220-9104	204-0112
Square 6mm	-	220-9102	220-9105	204-0111
Slotted 1.5mm	-	220-9103	220-9106	-
Socket hex. 4mm (5/32")	-	220-9118	220-9119	-
Socket hex. 6mm	220-9127	220-9107	-	-
Wing Knob, PA black/zinc die*	220-9117	-	-	-
c) Cam H in mm	steel, zinc plated			
7.5	220-0503	220-0503	220-0503	
13.5	220-0501	220-0501	220-0501	
19.5	220-0502	220-0502	220-0502	
Special cams				02.20
Optional:				
d) Assembling without O-ring	220-0001	220-0001	220-0001	
* Assembling to b) cam 90° to wing knob without O-ring	220-0006	-	-	