

4-124 Concealed Hinge Pr03 120°

door bending 25mm, for surface mounted door

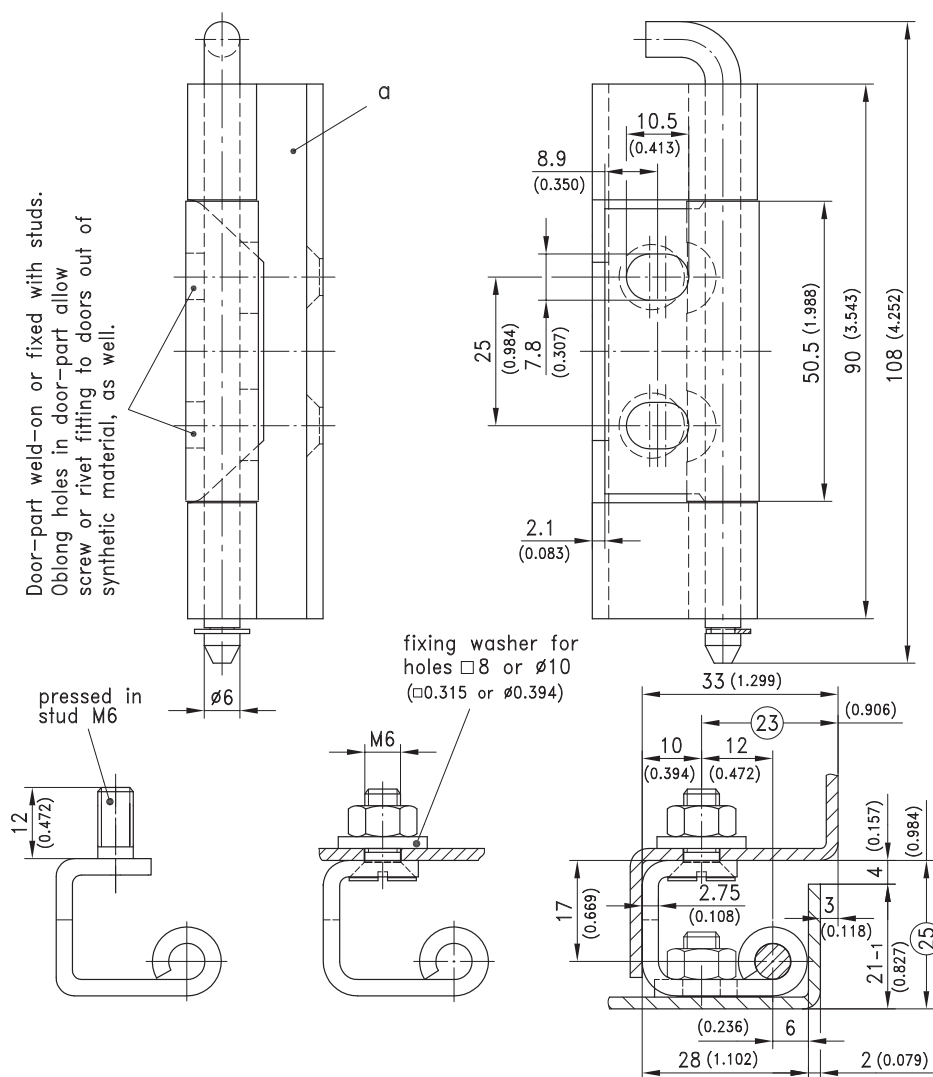


120° Concealed Hinge for surface mounted doors, heavy duty version. For application with Rod Latch system see product system 3-170.

- RH or LH application.

Material:

- a), a1) and a2)
- **Frame-part:** steel, zinc plated
- **Door-part:** steel, untreated
- **Pins:** steel, zinc plated add. by a1)
- **Fastening washer:** steel, zinc plated b), b1) and b2)
- **all parts:** steel, zinc plated



		Part No.		
Door-part steel, untreated, weld-on	Frame holes	Pin standard	Pin with groove	see page
a) Frame-part countersunk for M6	Ø6.3 or M6	243-9103	243-9104	
a1) as a), but with fastening washer	□8 or Ø10	243-9101	243-9102	
a2) as a) and a1), but with pressed in stud M6 and fastening washer	Ø6.3, □8, Ø10	243-9109	243-9110	
Door-part steel, zinc plated, screw-on				
b) Frame-part with countersunk for M6	Ø6.3 or M6	243-9107	243-9108	
b1) Frame-part as b), but with fastening washer	□8 or Ø10	243-9105	243-9106	
b2) as b) and b1) but with pressed in stud M6 and fastening washer	Ø6.3, □8, Ø10	243-9111	243-9112	
Stainless steel version				10.72
Countersunk machine screws and nuts				09.05