

# 7-165 Concealed Hinge Pr03 120°

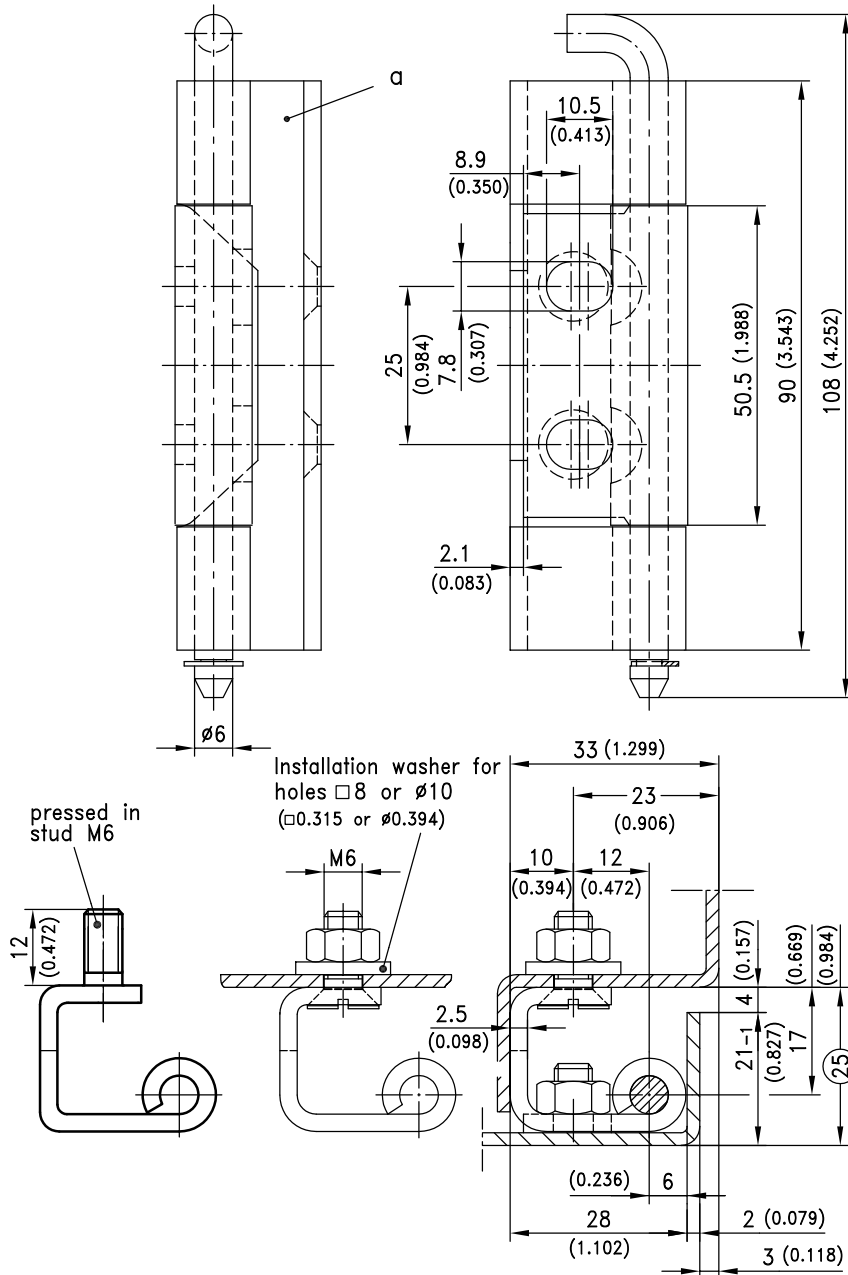
door bending 25mm, for surface mounted door, door-part screw-on, stainless steel AISI 304



120° Concealed hinge for heavy duty application.  
 • RH or LH application.

**Material:**

- **Frame-part, door-part, pin without groove and installation washer:** stainless steel AISI 304
- **Pin with groove:** stainless steel AISI 303
- **Retaining ring:** stainless steel



version	Frame holes	Pin standard	Pin with groove
a) frame-part with countersunk holes for M6 screws	Ø6.3 or M6	243-9203	243-9204
a1) as a), but with installation washer	□ 8 or Ø10	243-9201	243-9202
a2) as a) and a1), but with pressed in M6 stud	Ø6.3, □8, Ø10	243-9208	243-9209