

# 1-080 Clamping Quarter-Turn 21.6

for cutout 21.6

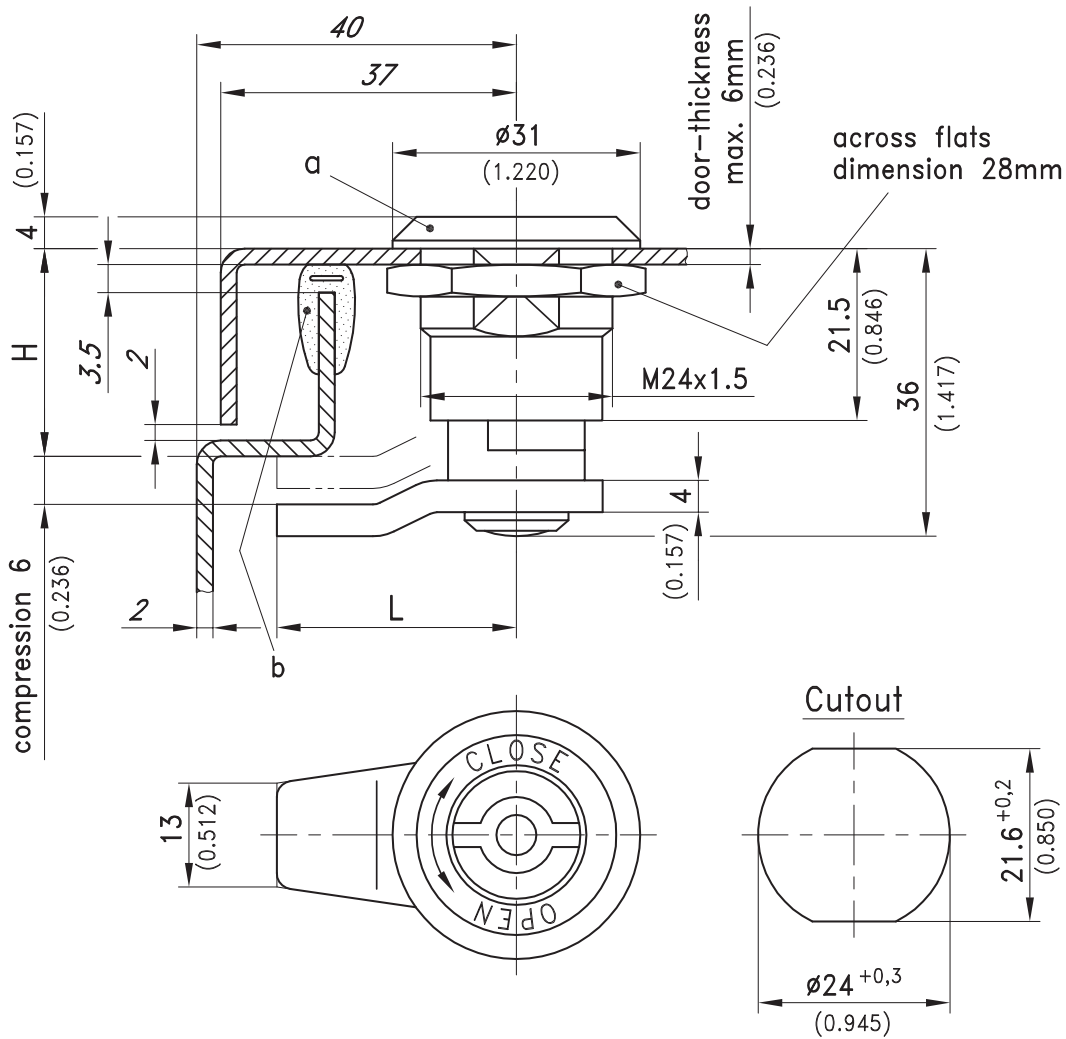
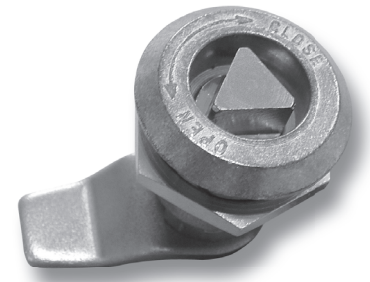


Clamping Quarter-turn with 6mm clamping-grip, RH or LH application, vibration-proof.

- The closing process is always clockwise.
- By turning the insert 90° the cam is at first put into closed position.
- Continuing rotation to the right (5x) will pull the cam towards the door.

**Material:**

- **Housing:** zinc die, zinc plated
- **Insert:** brass, nickel plated
- **Cams:** stainless steel
- **Nut:** steel, zinc plated



a) Clamping Quarter-Turn	H 18/L 30	H 21.5/L 30	H 27/L 30	H 20/L 45	H 21.5/L 45	see page
Insert						
Square 7mm	248-9001.35	248-9009.35*	248-9017.35	248-9025.35*	248-9033.35	
Square 8mm	248-9002.35*	248-9010.35*	248-9018.35	248-9026.35*	248-9034.35	
Triangular 7mm	248-9003.35	248-9011.35	248-9019.35*	248-9027.35*	248-9035.35	
Triangular 8mm	248-9004.35*	248-9012.35*	248-9020.35	248-9028.35*	248-9036.35*	
Triangular 10mm	248-9005.35*	248-9013.35*	248-9021.35*	248-9029.35*	248-9037.35*	
Double bit 3mm pin	248-9006.35	248-9014.35*	248-9022.35*	248-9030.35*	248-9038.35	
Double bit 5mm pin	248-9007.35*	248-9015.35*	248-9023.35	248-9031.35*	248-9039.35*	
Slotted 2x4mm deep	248-9008.35*	248-9016.35	248-9024.35	248-9032.35*	248-9040.35*	
b) e.g. Clip-on profile	209-0302.00	209-0302.00	209-0302.00	209-0302.00	209-0302.00	07.09

\* Price and delivery time on request