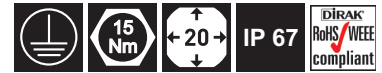


7-079 Compression Latch Pr20.1

H-dimension adjustable, stainless steel AISI 316



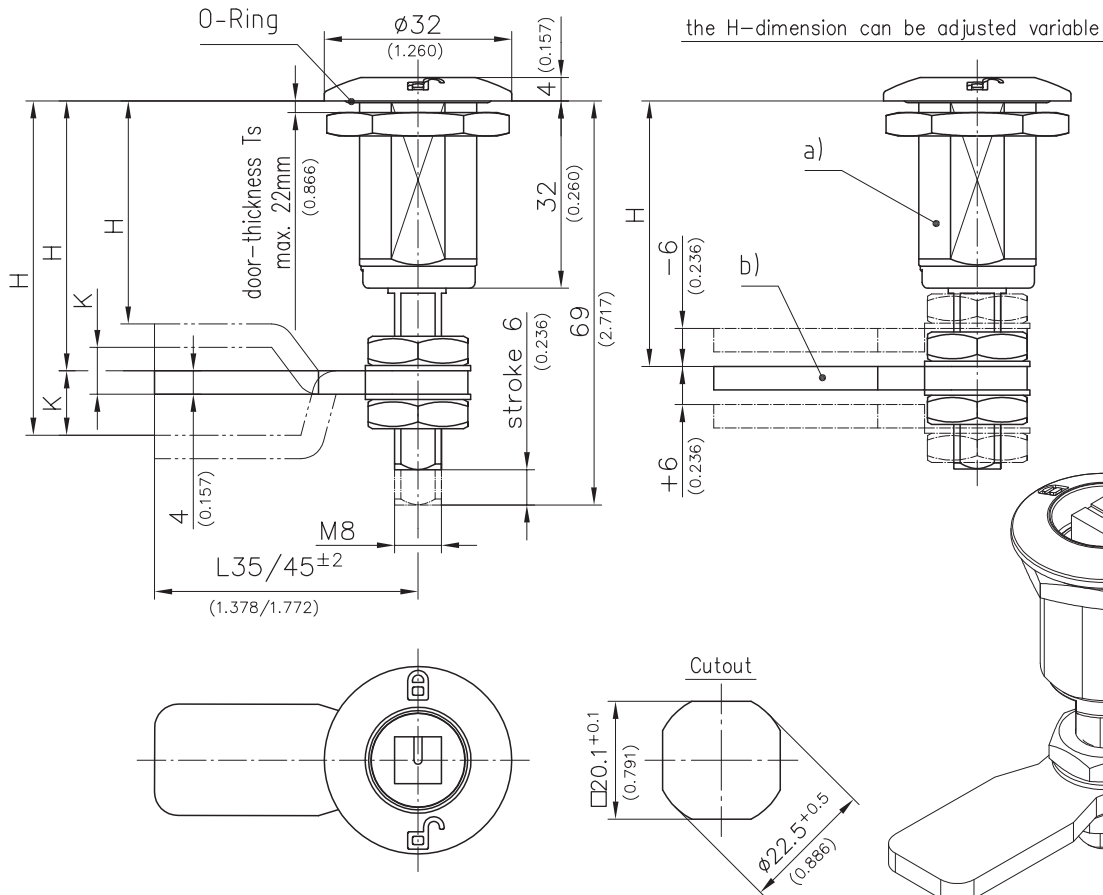
Elegant Compression Latch with variable H-dimension.

- Low profile design.
- Clamping grip 6mm/0.236.
- Vibration-proof according to DIN EN 61373.
- Dots are marked in color on the housing top open/closed in the shape of the padlock.
- Installation depth in uncompressed condition, 69mm/2.717.
- Water- and dust-tight according to IP67 DIN EN 60529.
- RH and LH version.
- The H-dimension can be varied via the cranking of the cams.

- The cam can be varied to $\pm 6\text{mm}/0.236$ via nuts (included) on the axis.

Material:

- **Housing, Insert, Axle, Nut, Cam and Serrated Screw:** stainless steel
- **O-Ring:** NBR

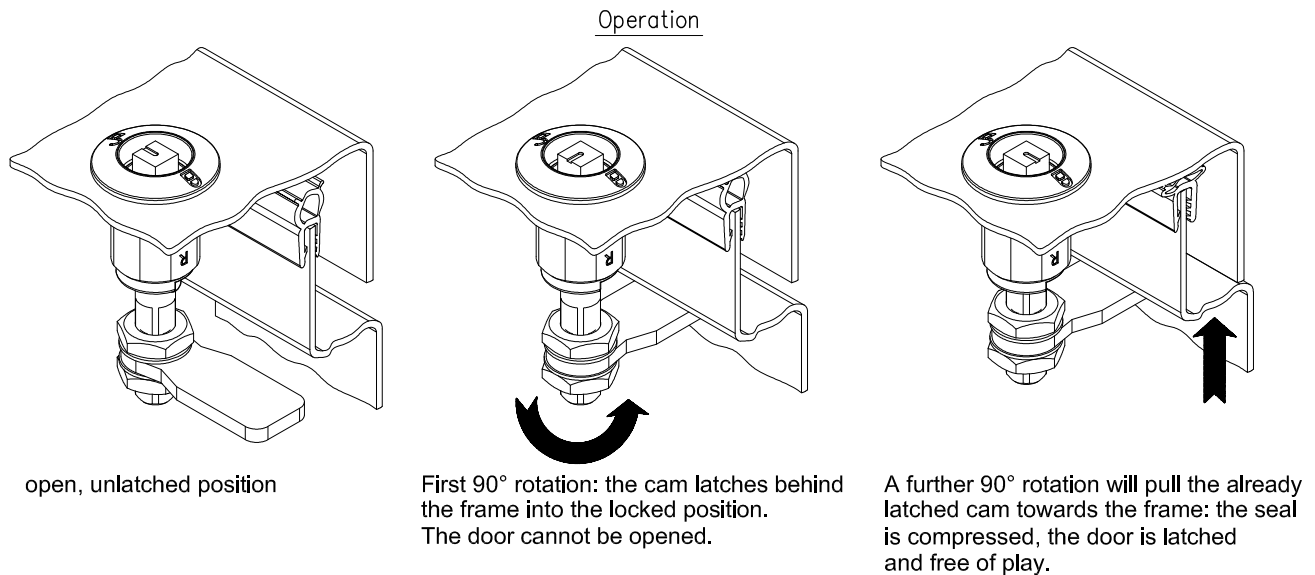


a) Compression Latch with Insert:	Part-No. RH (as drawn)	Part-No. LH	see product system
Square 6	248-92AA	248-92AA	
Square 7	248-9200	248-9250	
Square 8	248-9201	248-9251	
Double bit 3	248-9202	248-9252	
Double bit 5	248-9203	248-9253	
Triangular 6,5	248-9204	248-9254	
Triangular 7	248-9205	248-9255	
Tiangular 8	248-9206	248-9256	
Conical Square	248-9207	248-9257	
	248-9208	248-9258	

Serrated lock washer, anti-rotation device and dustcap to be ordered separately 1-275
 Key for Insert 6-100

7-079 Compression Latch Pr20.1

H-dimension adjustable, stainless steel AISI 316



Compression Latch with Cam and Accessories

248-92AA.00- X Y L KK

Insert version and Design:

RH or LH
see table a)

Accessories on Tabelle a):

0 = without Accessories
1 = Serrated lock washer 840-6798.00-00023
2 = Dustcap 200-4103
3 = Serrated lock washer + Dustcap

Assembling of Cam:

0 = without Cam
1 = Cam not assembled (attached loose)

length of Cam:

0 = without Cam
1 = L35
2 = L45

Cranked Cam:

see table b)

b) Cams	H in mm / inch	KK	Component Part-No. L35	Component Part-No. L45
negative	17 - 29 / 0.669 - 1.142	22	100-0535.80-00022	100-0545.80-00022
	19 - 31 / 0.748 - 1.220	20	100-0535.80-00020	100-0545.80-00020
	21 - 33 / 0.827 - 1.299	18	100-0535.80-00018	100-0545.80-00018
	23 - 35 / 0.906 - 1.378	16	100-0535.80-00016	100-0545.80-00016
	25 - 37 / 0.984 - 1.457	14	100-0535.80-00014	100-0545.80-00014
	27 - 39 / 1.063 - 1.535	12	100-0535.80-00012	100-0545.80-00012
	29 - 41 / 1.142 - 1.614	10	100-0535.80-00010	100-0545.80-00010
	31 - 43 / 1.220 - 1.693	08	100-0535.80-00008	100-0545.80-00008
	33 - 45 / 1.299 - 1.772	06	100-0535.80-00006	100-0545.80-00006
	35 - 47 / 1.378 - 1.850	04	100-0535.80-00004	100-0545.80-00004
37 - 49 / 1.457 - 1.929	02	100-0535.80-00002	100-0545.80-00002	
straight	39 - 51 / 1.535 - 2.008	00	100-0535.80-00000	100-0545.80-00000
positive	41 - 53 / 1.614 - 2.087	02	100-0535.80-00002	100-0545.80-00002
	43 - 55 / 1.693 - 2.165	04	100-0535.80-00004	100-0545.80-00004
	45 - 57 / 1.772 - 2.244	06	100-0535.80-00006	100-0545.80-00006
	47 - 59 / 1.850 - 2.323	08	100-0535.80-00008	100-0545.80-00008
	49 - 61 / 1.929 - 2.402	10	100-0535.80-00010	100-0545.80-00010
	51 - 63 / 2.008 - 2.480	12	100-0535.80-00012	100-0545.80-00012
	53 - 65 / 2.087 - 2.559	14	100-0535.80-00014	100-0545.80-00014
	55 - 67 / 2.165 - 2.638	16	100-0535.80-00016	100-0545.80-00016
	57 - 69 / 2.244 - 2.717	18	100-0535.80-00018	100-0545.80-00018
	59 - 71 / 2.323 - 2.795	20	100-0535.80-00020	100-0545.80-00020
	61 - 73 / 2.402 - 2.874	22	100-0535.80-00022	100-0545.80-00022