

7-075 Safety Quarter-Turn Pr20.1 L18

for cutout 20.1, length 18, vibration-proof, stainless steel AISI 316

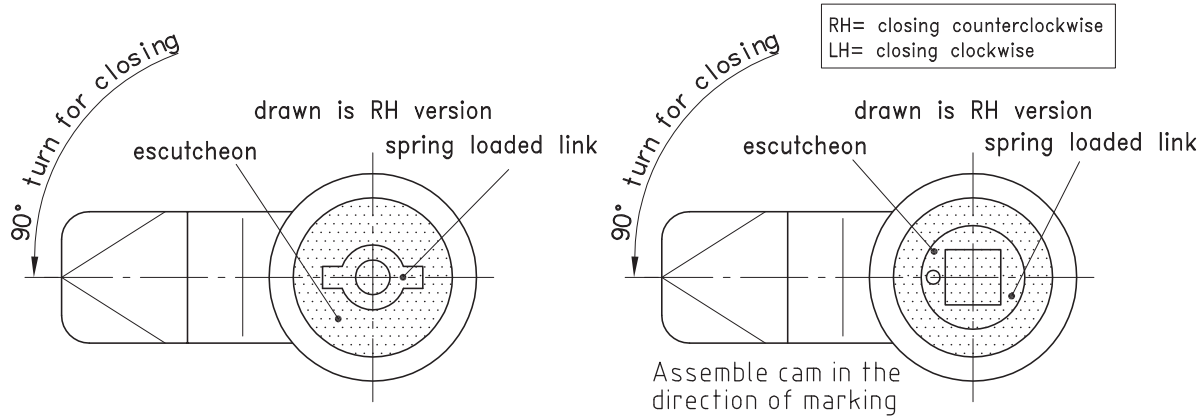
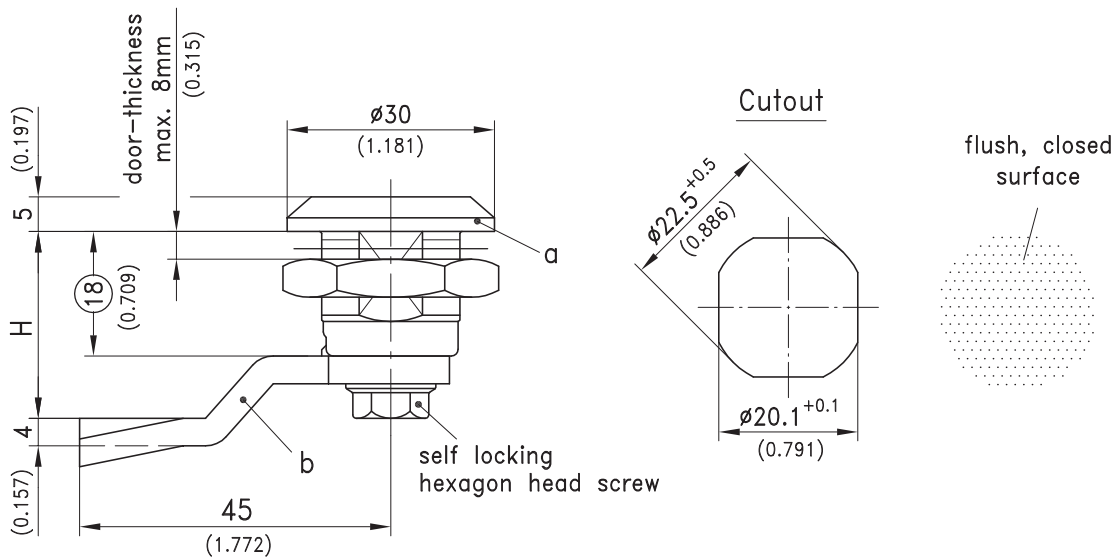


Safety Quarter-Turn, vibration-proof with high compression force.

- With the double bit versions the key is captive in the open position, according to DIN 43668.
- Water- and dust-tight according to IP65 DIN EN 60529.
- Additional advantage: completely closed surface.

Material:

- a) and b)
- **Housing, insert, escutcheon, spring loaded link and pin:** stainless steel AISI 316
- Cam:**
- stainless steel AISI 304 or b1)



a) Control unit is completely assembled and sealed (IP65) but without cam			
Insert		Part No.	see page
Double bit 5mm pin	RH*	255-9409	
Double bit 5mm pin	LH	255-9410	
Square 7mm	RH / LH	255-9402	
Square 8mm	RH / LH	255-9403	
Triangular 8mm	RH / LH	255-9405	
b) Cam stainless steel (on request parts can be assembled)			10.16
b1) Special cams			02.82
Optional:			
c) Assembling of cam, without O-ring			200-0001
*as drawn			