

1-500 Snap-Lock L30

length 30

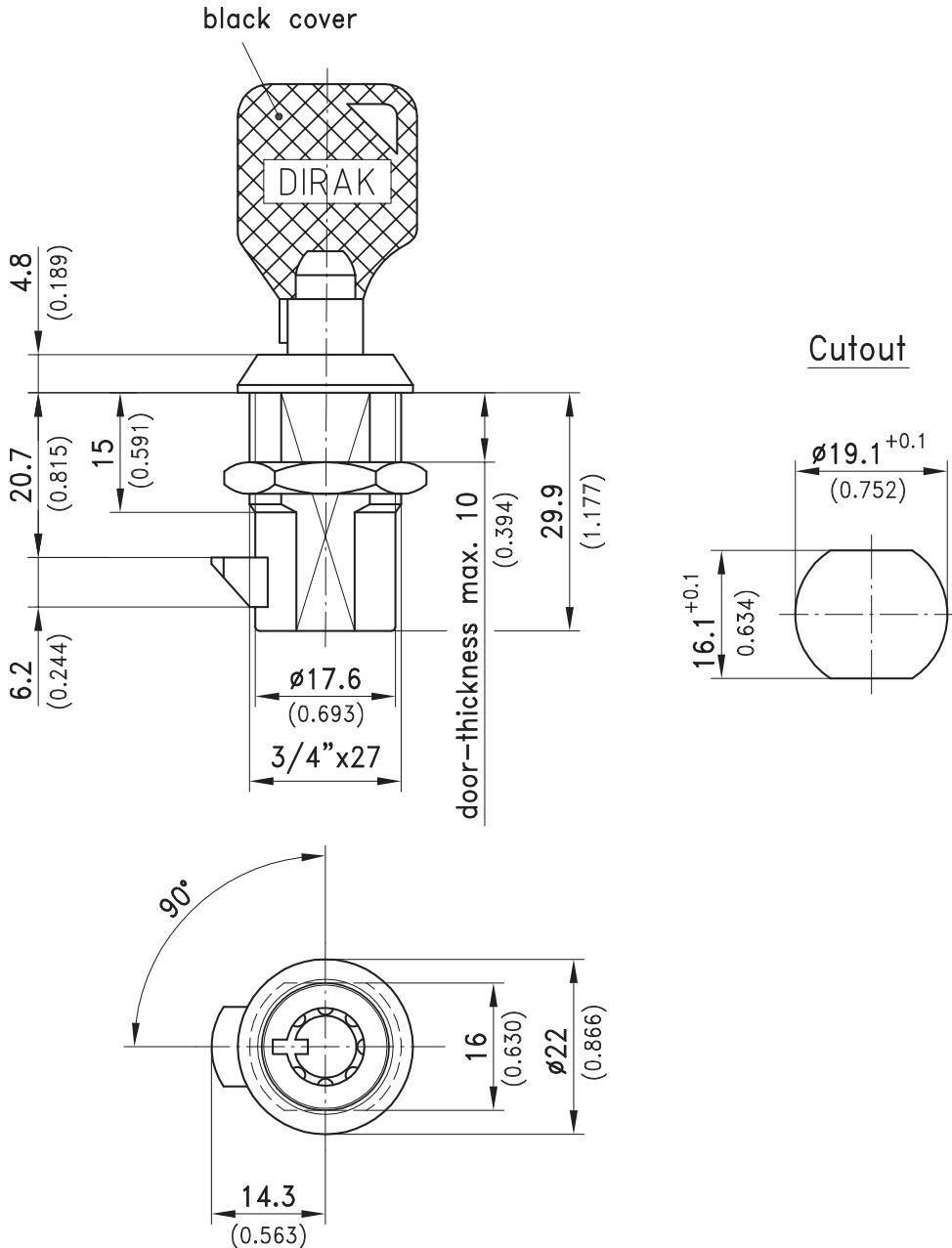


The spring loaded cam of this snap-lock is operated by the key.

- Lock is supplied with nut and wide stabilizing washer underneath nut.

Material:

- **Snap-Lock:** zinc die, chrome plated
- **Washer:** steel, zinc plated
- **Nut:** steel, zinc plated



Snap-lock	Part No.
keyed alike DIRAK D0205	264-9102
keyed different/mixed	264-9101
All locks supplied with two keys.	