

6-162 Compression Latch

Z-line lever actuated, flush



Clip-in, low profile compression latch for doors and panels with a sheet metal thickness of 1.4 to 3mm or, with a different housing, 3 to 3.4mm thickness.

- This latch is mainly designed for light duty applications: e.g. panels and hatches for vehicles as well as for electrical enclosures, A/C and air treatment enclosures (glove compartments, maintenance panels etc.).
- The completely pre-assembled latch is slid into the cutout in the open position and pushed-down into its final position.

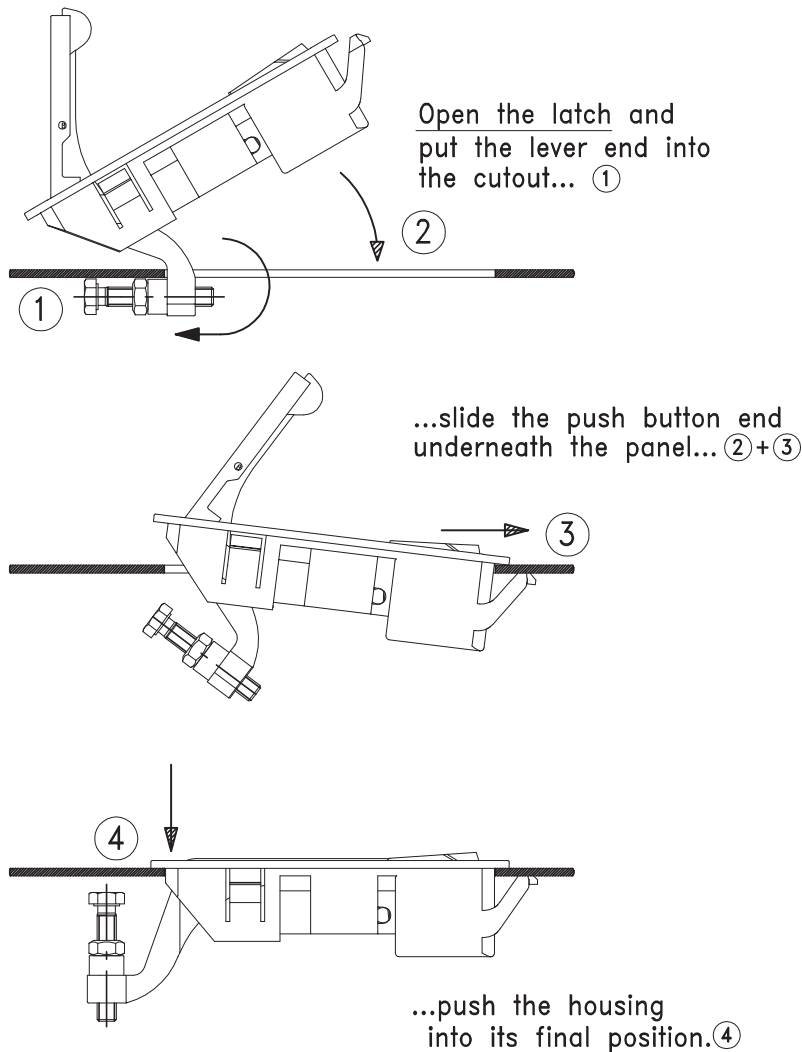
- The design of the wide hook and the two clips guarantee a strong and solid fixation in the panel.
- The adjusting screw guarantees a consistent pressure to the seal and can be adjusted upon need.
- Weight: without lock 40g/1.43 oz with lock 55g/2 oz

Material:

- **Compression latch:** PA, black
- **Screw and nut:** steel, zinc plated
- **Spring:** stainless steel



Mounting instruction



Compression Latch	door-thickness from 1.4 to 3mm 0.055 to 0.118inch	door-thickness from 3 to 3.4mm 0.118 to 0.134inch
non locking	282-9408	282-9410
keyed alike DIRAK 1333*	282-9407	282-9411
keyed different/mixed*	282-9409	282-9412
* with stainless dust-shutter		

6-162 Compression Latch

Z-line lever actuated, flush

