

1-071 Compression Latch Pr20.1

for cutout 20.1, very compact and tool-less installation



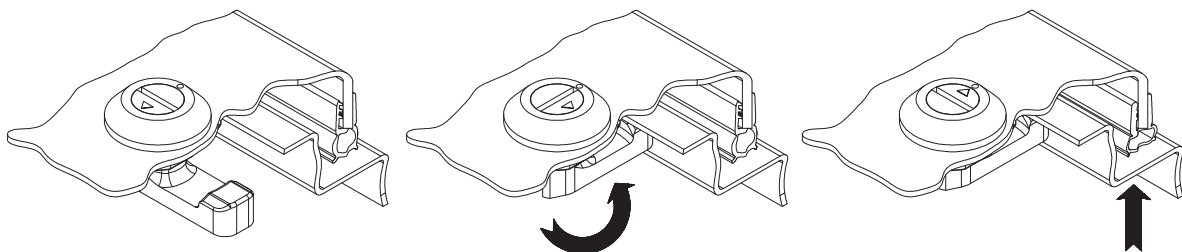
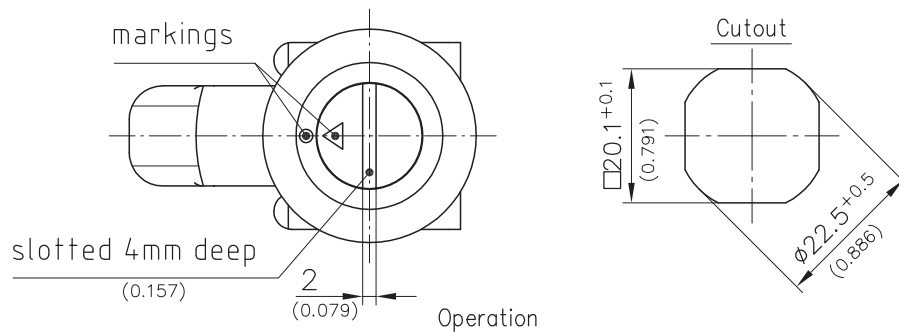
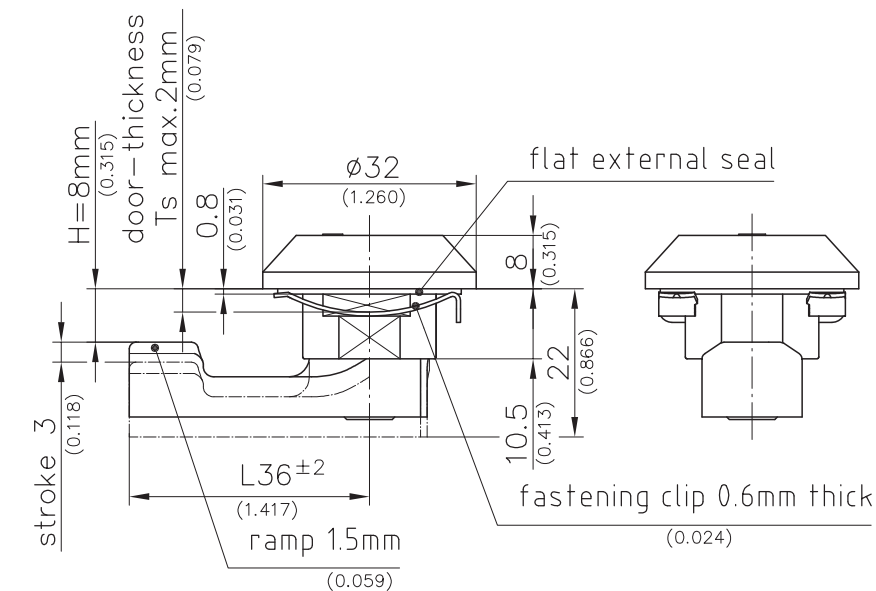
Compact and robust compression latch with 3mm (0.118) clamping grip for application inside the sealed area.

- Very low profile, only 22mm (0.866) depth in opened state.
- Fixed cam H-dimension 8mm (0.315), L36mm (1.417).
- RH and LH application.
- Matching dots mark the final position.
- A further benefit is that when the latch is opened, the door remains latched during the first 90° turn while compression is released from the seal.

- This allows any pressure inside the cabinet to escape before the door is fully opened.
- Tool-less installation in the door with a spring clip for door-thicknesses of up to 2mm (0.079).
- A pre-assembled Quarter-Turn can be installed through the cutout.

Material:

- **Housing, insert and cam:** zinc die, black
- **Fixing clip:** stainless steel
- **Flat external seal:** NBR



open, unlatched position

First 90° rotation: the cam latches behind the frame into the locked position. The door cannot be opened.

A further 90° rotation will pull the already latched cam 3mm (0.118) towards the frame: the seal is compressed, the door is latched and free of play.

Compression Latch complete with cam and insert	Part No. 291-9101
Other inserts and cams, price and delivery time on request!	