

1-043SL Fastener 30x14 SNAP-LINE

for cutout 30x14, with grounding clip, to be disassembled from the front, tool-less installation

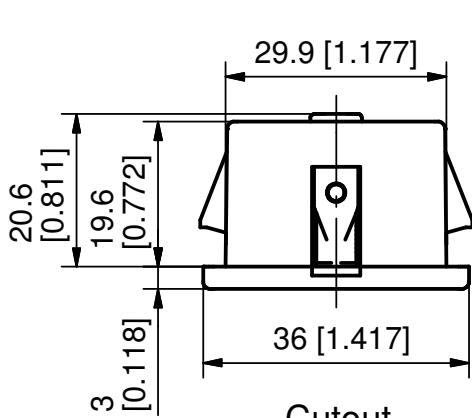


Fastener for joining flat metal sheets.

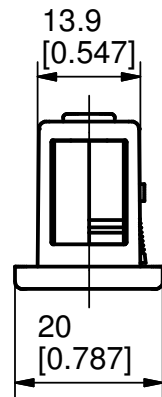
- This Fastener can be used within a clamping range of 3.0 to 10.5mm (0.118 to 0.413inch).
 - The connection of the sheets is established via a simple clip-in into its cutout.
 - The riveted grounding clip assures an electrical connection between the sheets and the fastener itself.
- The teeth of the riveted grounding clip penetrate the painted cutting edge of the cutouts as well.
 - By using the tool for uninstallation 292-0311.15 a disassembly from the front is possible.

Material:

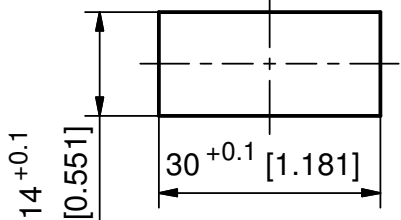
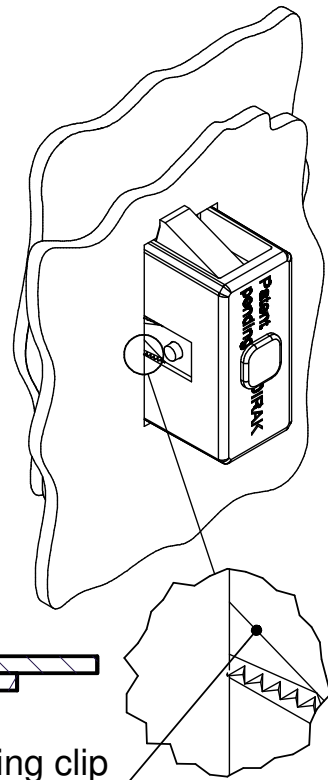
- **Housing:** zinc die, black
- **Snap wedges:** sintered steel
- **Grounding clip:** stainless steel



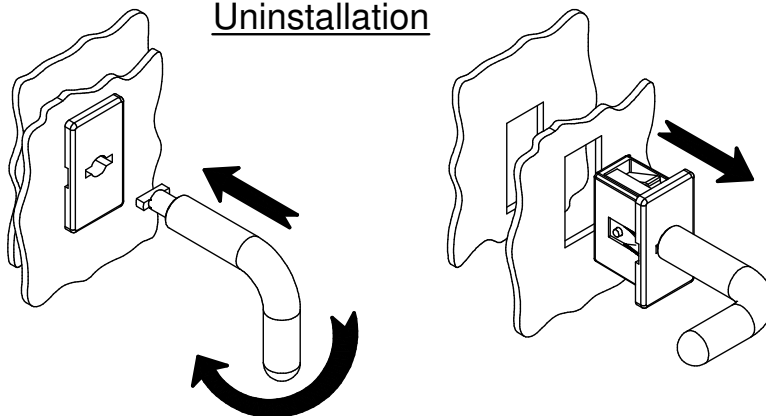
Cutout incl. paint



Example of application



Uninstallation



Grounding clip



	clamping range [Ⓢ]	Part No.	see page
Fastener	3.0 - 3.7	294-9003.00-00034	
	4.0 - 4.5	294-9003.00-00043	
	5.0 - 5.5	294-9003.00-00052	
	6.0 - 6.5	294-9003.00-00063	
Other [Ⓢ]- dimension on request!			
Cover for cutout 30x14mm		292-0402.00-03014	01.110, 01.111
Tool for uninstallation		292-0311.15	01.113