

1-044SL DUAL Fastener 30x10 SNAP-LINE

for cutout 30x10, tool-less installation

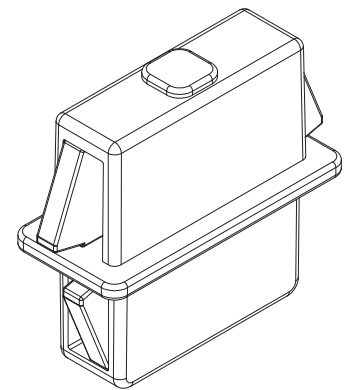
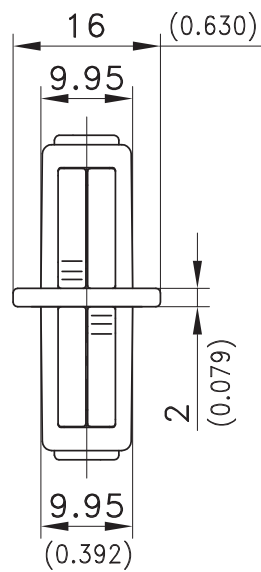
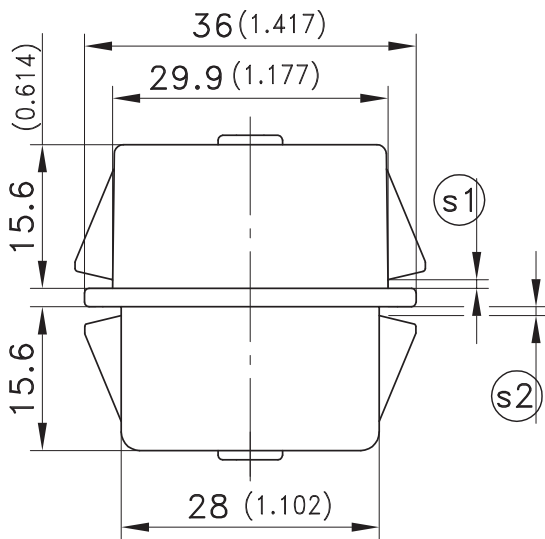


DUAL Fastener for joining flat metal sheets.

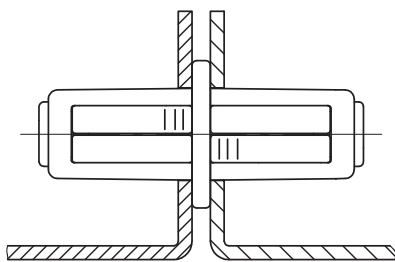
- In order to enable a tolerance compensation, one half of the housing is just 28mm long.

Material:

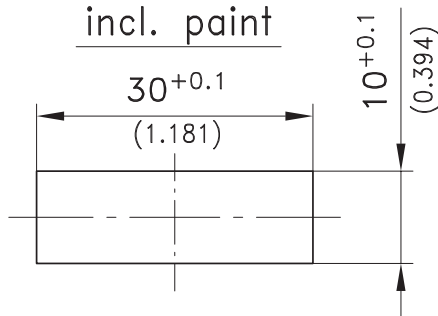
- **Housing:** zinc die, black or PA black
- **Snap wedges:** sintered steel



Example of application



Cutout incl. paint



clamping range ^{Ⓢ1}	clamping range ^{Ⓢ2}	PA, black	zinc die, black	see page
0.7 - 1.2	0.7 - 1.2	294-9102.52-10010	294-9107.33-10010	
1.2 - 1.7	1.2 - 1.7	294-9102.52-15015	294-9107.33-15015	
1.7 - 2.2	1.7 - 2.2	294-9102.52-20020	294-9107.33-20020	
2.2 - 2.7	2.2 - 2.7	294-9102.52-25025	294-9107.33-25025	
2.7 - 3.2	2.7 - 3.2	294-9102.52-30030	294-9107.33-30030	
4.7 - 5.2	4.7 - 5.2	on request	on request	

Other combinations of different clampings (Ⓢ1 + Ⓢ2 dimensions) on request!				
Cover for cutout 30x10mm		292-0401.00-03010	292-0401.00-03010	01.110, 01.111
Reinforcement plate for cutout 30x8 and 30x10mm		292-0702.15-01030	292-0702.15-01030	01.112
Tool for uninstallation		292-0306.80-02530	292-0306.80-02530	01.113