

# 1-035SL Captive Fastener □9.5 SNAP-LINE

for cutout □9.5, tool-less installation



Captive Fastener for fastening together flat metal panels.

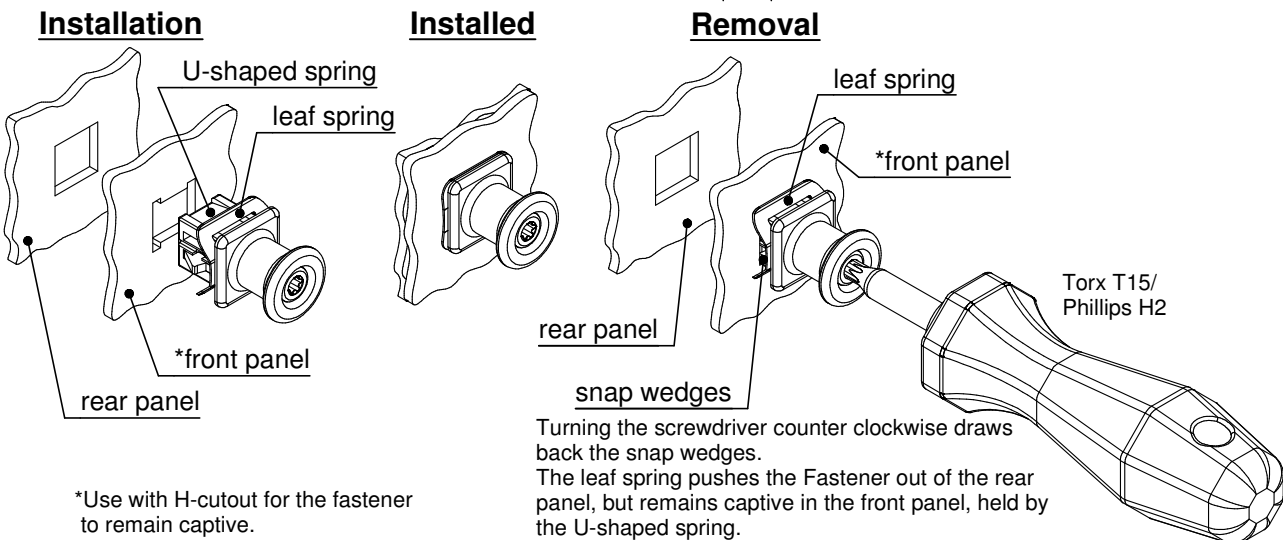
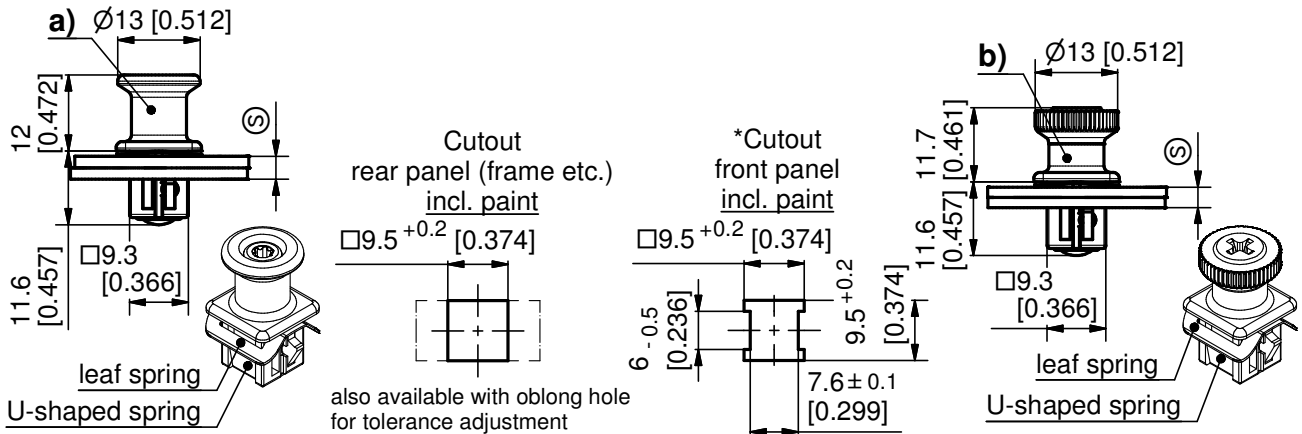
- Fastens doors, cover, rack drawers etc. to the frame/housing.
- The Fastener is captive in the front panel.
- The Captive Fastener eliminates the concern of losing, dropping or misplacing hardware.
- Where there are several Captive Fasteners, they can be released one at a time without dropping out of the panel.
- Tool-less installation.
- Completely pre-assembled.
- Vibration-resistant.
- Save up to 90% assembly time.

- Kinds of inserts:
  - a) Torx insert for T15.
  - b) Hand Turning Knob with recessed head for Phillips H2.
- **Version a) complies with Machinery Directive 2006/42EC:** In order to meet Machinery Directive 2006/42EC an additional U-Shaped spring is riveted onto the housing. The Captive Fastener is held in position and remains held by the U-shaped spring.



**Material:**

- **Housing:** zinc die, chrome plated or black
- **Insert:** aluminium, anodized
- **U-shaped spring and leaf spring:** stainless steel
- **Snap wedges:** sintered steel, zinc plated



\*Use with H-cutout for the fastener to remain captive.

a) Fastener with Torx insert plus leaf spring	clamping range ☺	chrome plated	black
		3.3 - 4.0	-
b) Fastener with Turning Knob and recessed head plus leaf spring	1.5 - 2.0	294-9210.00-00017	294-9211.00-00017
	2.1 - 2.8	294-9210.00-00026	294-9211.00-00026
	2.9 - 3.6	294-9210.00-00034	294-9211.00-00034
	3.7 - 4.4	294-9210.00-00042	294-9211.00-00042
	Other ☺ - dimension on request!		