

1-034SL Captive Flex-Fastener □9.5 SNAP-LINE



for cutout □9.5, meets machinery directive 2006/42EC, tool-less installation, self-adjusting, spring supported clamping range of 0.5-5.5mm

The Captive Fastener offers the advantages of an ordinary captive screw combined with simpler, less costly installation.

- The captive fastener meets machinery directive 2006/42EC, stating that safety relevant components may only be operated with tools.
- The captive fastener is held securely in the panel even under extreme vibration environments.
- A 1/4 turn of the insert will cause the captive fastener to pop out of the panel cutout.
- By use of an internal spring, the captive fastener is self-adjusting to any application thickness between 0.5mm and 5.5mm (0.020-0.217).
- Connects panels and securely latches doors and covers.
- The fastener is captive, to the front

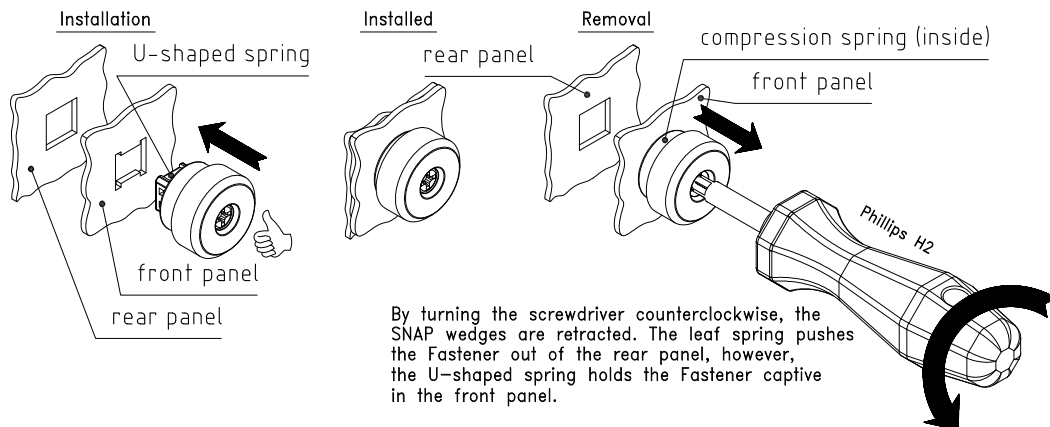
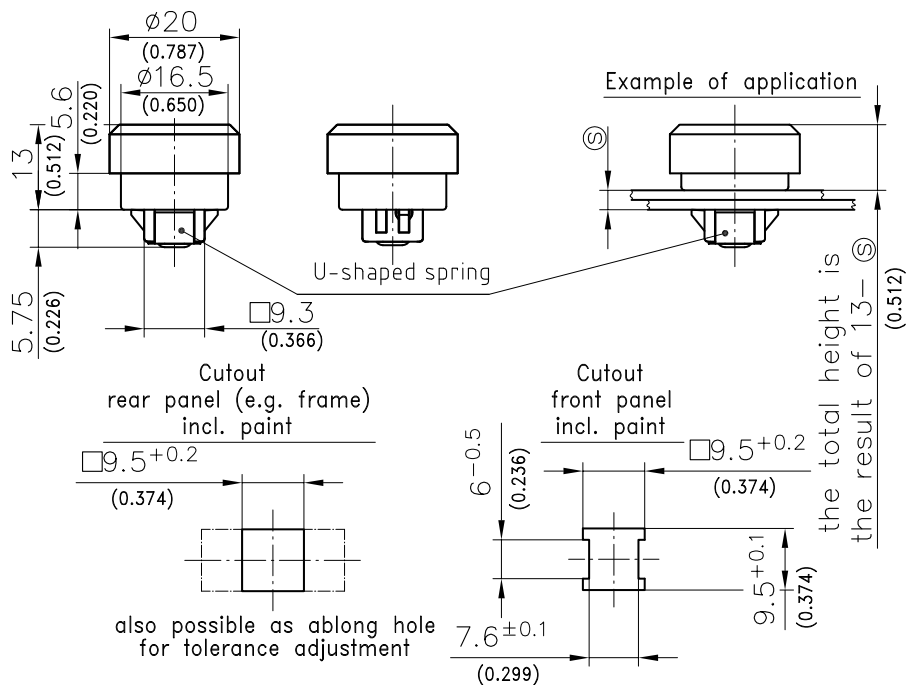
panel.

- The captive fastener eliminates the concern of loosening, dropping or misplacing hardware.
- In applications requiring multiple fasteners, because they are captive, the fasteners can easily be disengaged one after the other without concern of losing or dropping them.
- One piece, completely pre-assembled.
- Save up to 90% assembly time.
- The \textcircled{S} dimension indicates the total thickness of the sheet metal panels.



Material:

- **Housing and washer:** zinc die, chrome plated
- **Insert:** aluminium, hardened
- **Compression spring and U-shaped spring:** stainless steel
- **SNAP wedges:** sintered steel



| Captive Fastener | clamping range \textcircled{S} 0.5 - 5.5 | Part No. 294-9302.00-00055 |
|------------------|---|-------------------------------|
|------------------|---|-------------------------------|