

7-061 NT Swinghandle FS PrC

for cutout C, for flat rods, for profile-cylinder, stainless steel AISI 316



Low profile, elegant swinghandle for application with rod latch system see product system 7-040. The design and the extremely narrow gap between handle and body makes this swinghandle suitable against vandalism.

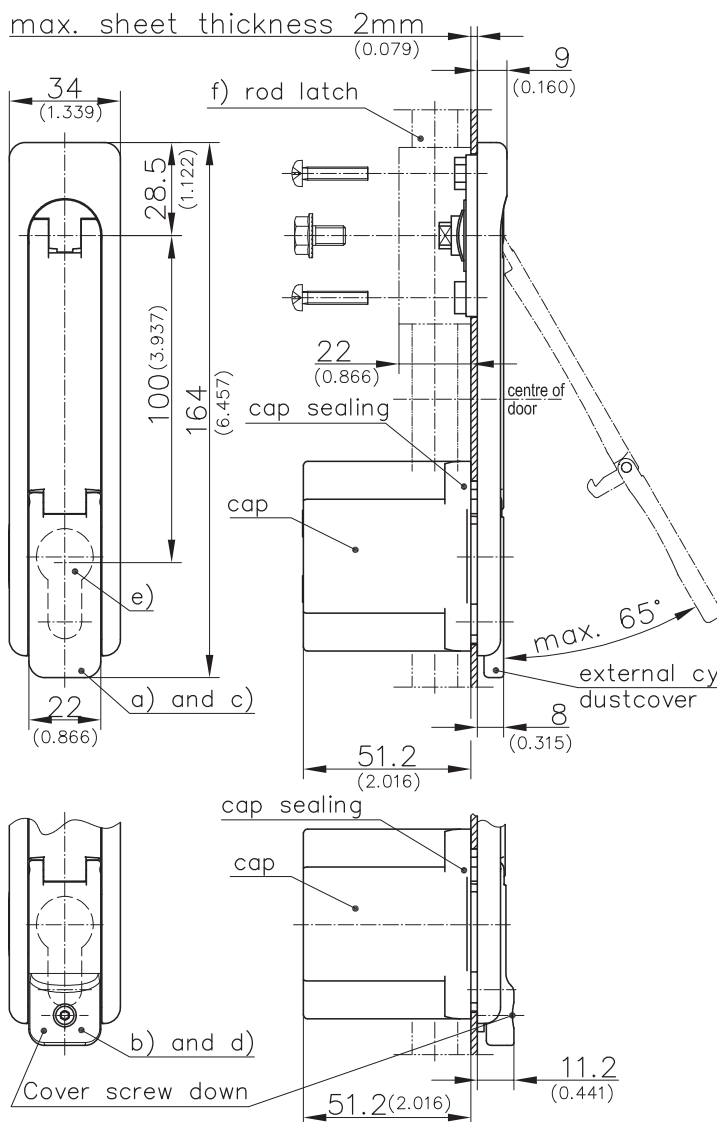
The low profile design prevents this swinghandle being used as climbing support.

- Locking cylinder fitted in the dish.
- A cage protects the locking cylinder from being deliberately pushed or forced through.
- Bolted internal cap is made of stainless steel.
- Easy fitting.
- Cutout 50x25mm further dimensions of cutout version PrC see product system 3-010.

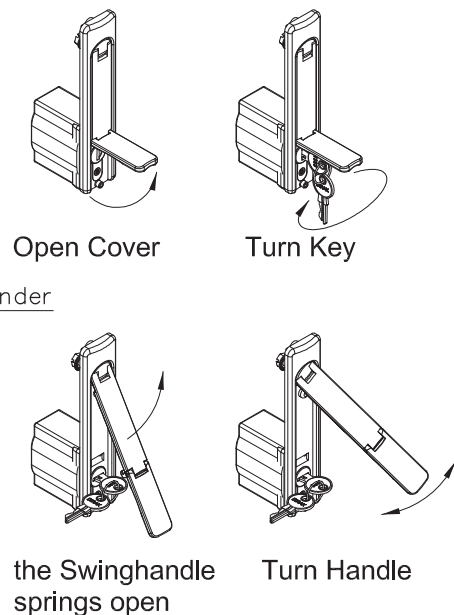
- Water- and dust-tight according to IP65 DIN EN 60529.
- ~135° Swing.
- RH and LH application.
- Cover optional screw down.

Material:

- **Dish, handle, cover, cap, rotating disk, spring, grooved pin, pin with axial knurl, locking bolt, serrated screw, countersunk screw and raised head screw:** stainless steel AISI 316L
- **Cap sealing:** NBR
- **O-Ring:** NBR/Perbunan, black
- **Washer:** PTFE- Teflon



Operation



	Part No.	see page
a) NT-Swinghandle stainless steel for Profile-Cylinders 40 and 45mm	307-9301.00-00000	
b) NT-Swinghandle stainless steel for Profile-Cylinders 40 and 45mm, cover screw down	307-9306.00-00000	
c) NT-Swinghandle stainless steel for KABA	on request	
d) NT-Swinghandle stainless steel for KABA, cover screw down	307-9303.00-00000	
e) Profile-cylinder only version A		03.42, 03.43
f) Rod latch		10.42, 10.43