

# 2-075SL Swinghandle RS PrC SNAP-LINE

for cutout C, for round rods, for cylinder, tool-less installation



Swinghandle for cam and 3-Point cam SNAP-LINE.

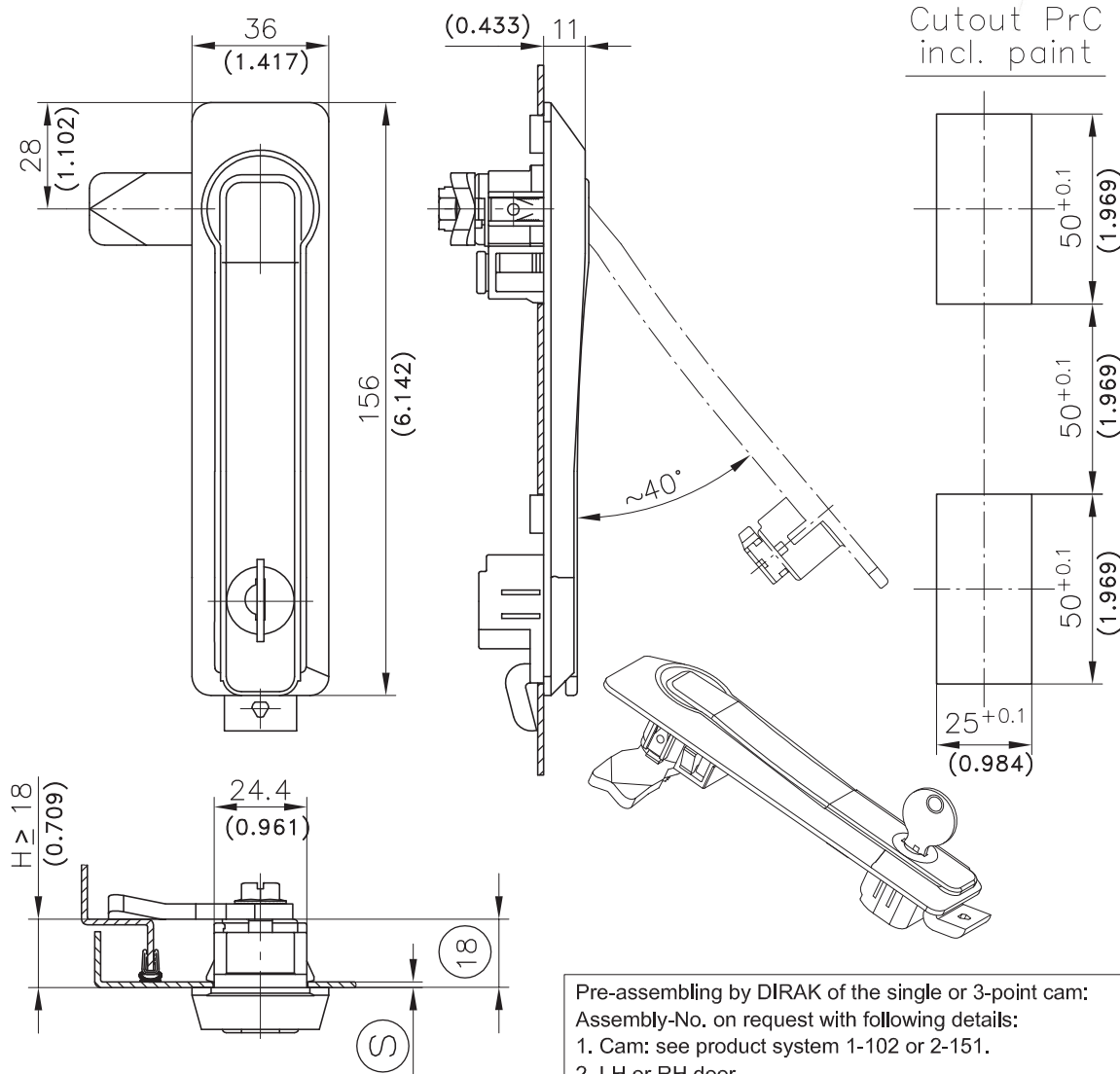
- This swinghandle has the shape of the Trim-Line handle and can be installed with the single or 3-point cam already pre-assembled by DIRAK.
- Grounding by grounding clip.
- A non-locked handle has a detent in the door-dish.

**Material:**

- **Dish:** PA, black
- **Handle and turning-disk:** zinc die, black
- **Bottom (90° base) LH/RH:** zinc die, zinc plated
- **Grounding clip:** stainless steel
- **Locking cylinder:** PA
- **Snap wedges:** PA



Cutout PrC incl. paint



Pre-assembly by DIRAK of the single or 3-point cam:  
 Assembly-No. on request with following details:  
 1. Cam: see product system 1-102 or 2-151.  
 2. LH or RH door  
 3. Door-thickness Ⓢ  
 4. Keyed alike or keyed different / mixed.

Swinghandle SNAP-LINE (without cam)				
clamping range Ⓢ	keyed alike 1333	keyed different/mixed	without cylinder, with plug	see page
1.2 - 1.7	407-9302.00-00015	407-9301.00-00015	407-9303.00-00015	
1.7 - 2.2	407-9302.00-00020	407-9301.00-00020	413-9303.00-00020	
<b>Other Ⓢ - dimension on request!</b>				
Tool for uninstallation	292-0306.80-02530	292-0306.80-02530	292-0306.80-02530	01.113
Tool for uninstallation	292-0301.15-00000	292-0301.15-00000	292-0301.15-00000	01.113