

# 4-330SL Hinge Pr01 SNAP-LINE 130°

frame-part snap-in, for nested door

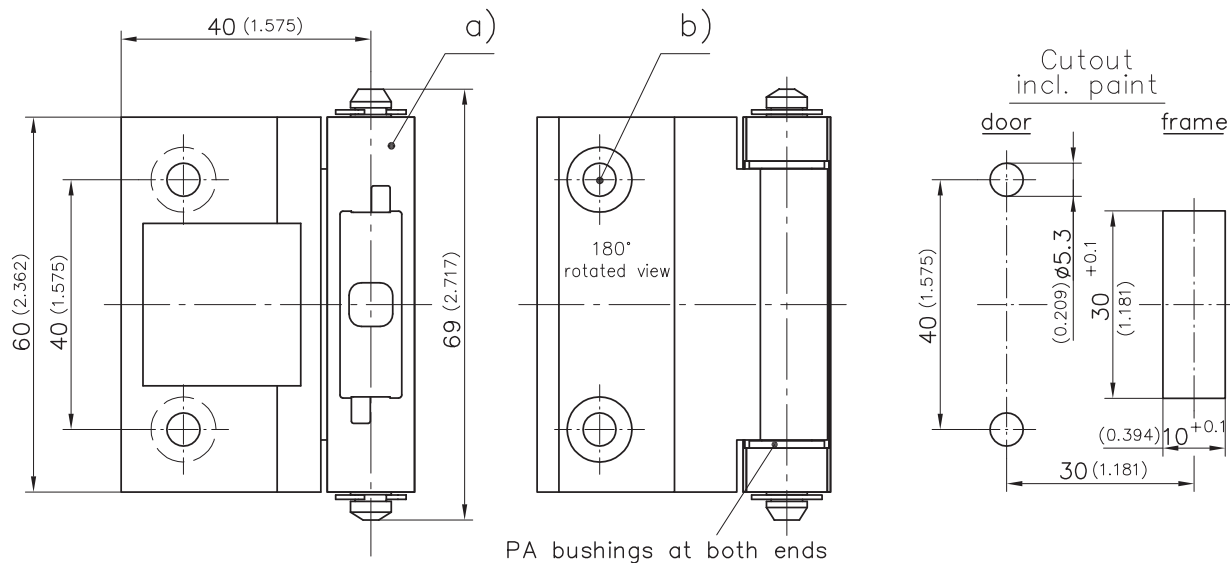
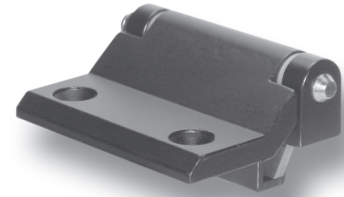


180° Hinge SNAP-LINE frame-part snap-in.

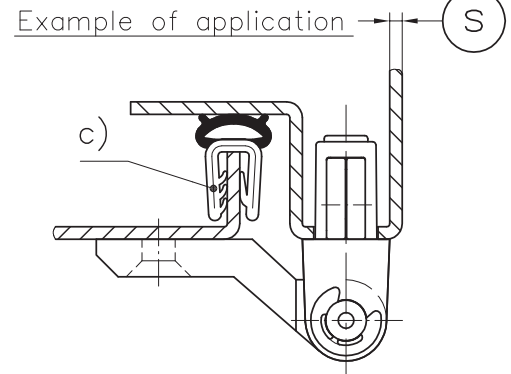
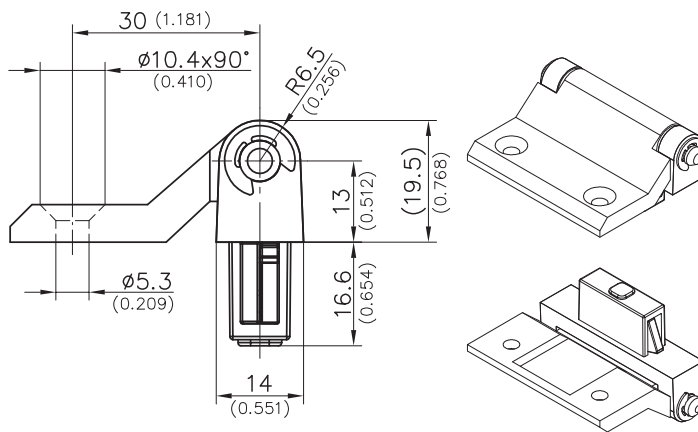
- 180° Opening angle.
- Further details and dimensions see product system 4-330.

**Material:**

- **Frame-part and door-part:** zinc die, black
- **Loose pin:** steel, zinc plated
- **Fixed pin:** stainless steel
- **Bushings:** PA, natural
- **Washers:** steel, zinc plated
- **Snap wedges:** sintered metal, coated



PA bushings at both ends



a) Hinge, snap-in	clamping range <sup>Ⓢ</sup>	loose pin (steel, zinc plated)	fixed pin (stainless steel)	see page
	1.2 - 1.7	417-9001.00-00015	417-9101.00-00015	
	1.7 - 2.2	417-9001.00-00020	417-9101.00-00020	
	2.2 - 2.7	417-9001.00-00025	417-9101.00-00025	
	2.7 - 3.2	417-9001.00-00030	417-9101.00-00030	
b) Countersunk machine screws				09.05
c) e.g. Clip-on profile		209-0201.00-00000	209-0201.00-00000	07.19
d) Cover for cutout 30x10mm		292-0401.00-03010	292-0401.00-03010	01.110, 01.111
e) Reinforcement plate for cutout 30x8 and 30x10mm		292-0702.15-01030	292-0702.15-01030	01.112
f) Tool for uninstallation		292-0306.80-02530	292-0306.80-02530	01.113