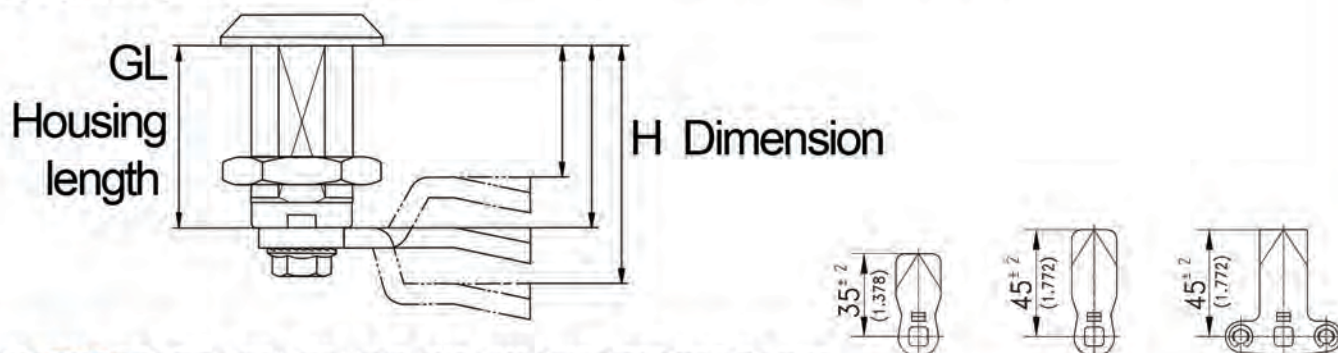


Cam Selection Guide

For standard quarter turn locks

1. Find GL (Housing length) of the lock/handle at the top of the table below, i.e. 18mm, 30mm etc.
2. Establish H Dimension required, (distance from the top of the housing to the top of the cam) See drawing below. H is found under the appropriate Housing length GL.
3. Select desired length and style (35mm, 45mm or 3point cam).

See the marked example on the table below. In this example GL is 18, H dimension required is 22 and cam length is 45mm. By following the above steps the final part number is highlighted in green.



GI12	GI18	GI20	GI22	GI30	GI32	GI36	GI40	GI42	GI46	GI50	GI56	GI60	GI66			
-	2	4	6	14	16	20	24	26	30	34	40	44	50	-	200-0402**	-
-	4	6	8	16	18	22	26	28	32	36	42	46	52	-	200-0404**	200-9504
-	6	8	10	18	20	24	28	30	34	38	44	48	54	200-0606**	200-0406**	200-9506
-	8	10	12	20	22	26	30	32	36	40	46	50	56	200-0608**	200-0408**	200-9508
-	10	12	14	22	24	28	32	34	38	42	48	52	58	200-0610**	200-0410**	200-9510
6	13	15	17	25	27	31	35	37	41	45	51	55	61	200-0613**	200-0413	200-9513
8	14	16	18	26	28	32	36	38	42	46	52	56	62	200-0614**	200-0414	200-9514
10	16	18	20	28	30	34	38	40	44	48	54	58	64	200-0616	200-0416	200-9516
12	18	20	22	30	32	36	40	42	46	50	56	60	66	200-0618	200-0418	200-9518
14	20	22	24	32	34	38	42	44	48	52	58	62	68	200-0620	200-0420	200-9520
16	22	24	26	34	36	40	44	46	50	54	60	64	70	200-0622	200-0422	200-9522
18	24	26	28	36	38	42	46	48	52	56	62	66	72	200-0624	200-0424	200-9524
19	25	27	29	37	39	43	47	49	53	57	63	67	73	200-0625	200-0425	200-9525
20	26	28	30	38	40	44	48	50	54	58	64	68	74	200-0626	200-0426	200-9526
22	28	30	32	40	42	46	50	52	56	60	66	70	76	200-0628	200-0428	200-9528
24	30	32	34	42	44	48	52	54	58	62	68	72	78	200-0630	200-0430	200-9530
26	32	34	36	44	46	50	54	56	60	64	70	74	80	-	200-0432	200-9532
28	34	36	38	46	48	52	56	58	62	66	72	76	82	-	200-0434	200-9534
29	35	37	39	47	49	53	57	59	63	67	73	77	83	200-0635	200-0435	200-9535
30	36	38	40	48	50	54	58	60	64	68	74	78	84	-	200-0436	200-9536
32	38	40	42	50	52	56	60	62	66	70	76	80	86	200-0638	200-0438	200-9538
34	40	42	44	52	54	58	62	64	68	72	78	82	88	200-0640	200-0440	200-9540
36	42	44	46	54	56	60	64	66	70	74	80	84	90	200-0642	200-0442	200-9542
38	44	46	48	56	58	62	66	68	72	76	82	86	92	200-0644	200-0444	200-9544
39	45	47	49	57	59	63	67	69	73	77	83	87	93	-	200-0445	200-9545*
41	47	49	51	59	61	65	69	71	75	79	85	89	95	-	200-0447	200-9547*
44	50	52	54	62	64	68	72	74	78	82	88	92	98	-	200-0450	200-9550*
47	53	55	57	65	67	71	75	77	81	85	91	95	101	-	200-0453	-
49	55	57	59	67	69	73	77	79	83	87	93	97	103	-	200-0455	-

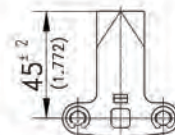
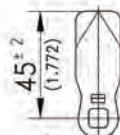
* Available on request

** Not suitable for use with cam slide shoes

Stainless steel cam options

Please refer to the instructions on page 1 and the table below.

GI 18	GI 30	GI 36	GI 40	GI 50	GI 60			
6	18	24	28	38	48	---	200-0506	
8	20	26	30	40	50	---	200-0508	
10	22	28	32	42	52	---	200-0510	
14	26	32	36	46	56	---	200-0514	
16	28	34	38	48	58	---	200-0516	
18	30	36	40	50	60	---	200-0518	
20	32	38	42	52	62	200-4535.00-00020	200-0520	
22	34	40	44	54	64	200-4535.00-00022	200-0522	200-9845.00-00022
24	36	42	46	56	66	---	200-0524	
26	38	44	48	58	68	---	200-0526	
28	40	46	50	60	70	---	200-0528	200-9845.00-00028
32	44	50	54	64	74	---	200-0532	
50	62	68	72	82	92	---	200-0550	



Slide Shoes for Cams

These low cost slide shoes help provide a positive compression and reduce the friction and paint damage caused by constant operation.

Part No: 200- 9622



Cam Adapters

For 3 point locking we can supply these handy cam adapters, simply slot a standard cam into the adapter to create a 3 point cam.

Part No: 200- 9596

For more information on anything you have seen here please do not hesitate to contact us

Tel: 0208 568 1616

Email: info@fdb.co.uk

Web: www.fdb.co.uk