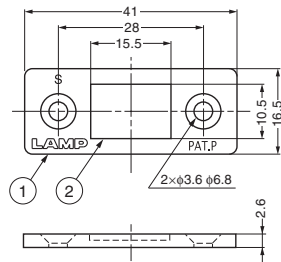


## MAGNETIC CATCH

MC-158



\*Without the mark "PAT.P" from the next production lot

## ■Body

Item Code	Item Name	Magnetic Force N	Magnetic Force kgf	Weight	Box	Carton
140-050-014	MC-158	14.7 N	1.5 kgf	12 g	200 pcs	1,000 pcs

## ■Features

Ultra thin magnetic catch ideal for tight space.

Similar item: MC-159-8 (Strong magnetic, P.263), MC-159-SUS (P.263)

## ■Remarks

Max. temperature: 80°C

## ■Recommended Screw

Countersunk head wood screw or Countersunk head screw M3

## ■Sold Separately

Counter plate: MC-YN001U (P.273)

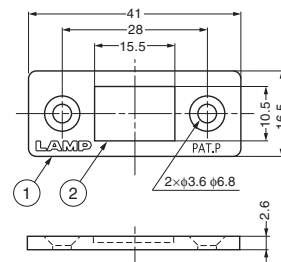
## ■Counter Plate (Sold Separately)

Item Code	Item Name	Page
140-059-555	MC-YN001U	P.273

No.	Part Name	Material	Finish
①	Body	Steel	Nickel
②	Magnet	Neodymium	Nickel

## MAGNETIC CATCH

MC-159



\*Without the mark "PAT.P" from the next production lot

## ■Body

Item Code	Item Name	Magnetic Force N	Magnetic Force kgf	Weight	Box	Carton
140-058-061	MC-159	39 N	4 kgf	12 g	200 pcs	1,000 pcs

## ■Features

● Ultra thin magnetic catch ideal for tight space.

● Strong magnetic force.

Similar item: MC-159-8 (Strong magnetic, P.263), MC-159-SUS (P.263)

## ■Remarks

Max. temperature: 80°C

## ■Recommended Screw

Countersunk head wood screw or Countersunk head screw M3

## ■Sold Separately

Counter plate: MC-YN001U (P.273)

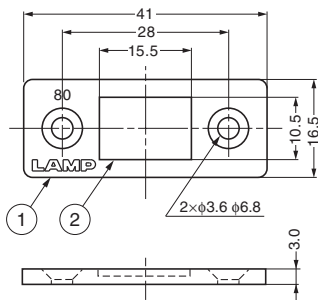
## ■Counter Plate (Sold Separately)

Item Code	Item Name	Page
140-059-555	MC-YN001U	P.273

No.	Part Name	Material	Finish
①	Body	Steel	Nickel
②	Magnet	Neodymium	Nickel

# MAGNETIC CATCH

# MC-159-8



**Body**

Item Code	Item Name	Magnetic Force N	Magnetic Force kgf	Weight	Box	Carton
140-026-510	MC-159-8	78.4 N	8 kgf	14 g	200 pcs	1,000 pcs

**Features**

Ultra thin and extra strong magnetic force.  
 Similar items (different magnetic force): MC-158, MC-159 (P.262), MC-159-SUS (below)

**Remarks**

Max. temperature: 80°C

**Recommended Screw**

Flat head screw M3 or Countersunk head wood screw 3.1

**Sold Separately**

Counter plate MC-YN001U (P.273)

No.	Part Name	Material	Finish
①	Body	Steel	Nickel
②	Magnet	Neodymium	Nickel

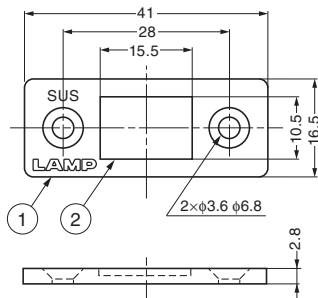
**Counter Plate (Sold Separately)**

Item Code	Item Name	Page
140-059-555	MC-YN001U	P.273

# MAGNETIC CATCH



# MC-159-SUS



**Body**

Item Code	Item Name	Magnetic Force N	Magnetic Force kgf	Weight	Box	Carton
140-026-511	MC-159-SUS	49 N	5 kgf	13 g	200 pcs	1,000 pcs

**Features**

● Anti rust: made of stainless steel and coated with acrylic resin.  
 ● Ultra thin and extra strong magnetic force.  
 Similar items (different magnetic force): MC-158, MC-159 (P.262), MC-159-8 (above)

**Remarks**

Max. temperature: 80°C

**Recommended Screw**

Flat head screw M3 or Countersunk head wood screw 3.1

**Sold Separately**

Counter plate (made of SUS) MC-JM49, AS-68 (P.273)

No.	Part Name	Material	Finish
①	Body	Stainless Steel (SUS430)	Mirror
②	Magnet	Neodymium	Acrylic Coating

**Counter Plate (Sold Separately)**

Item Code	Item Name	Page
140-059-555	MC-YN001U	P.273