

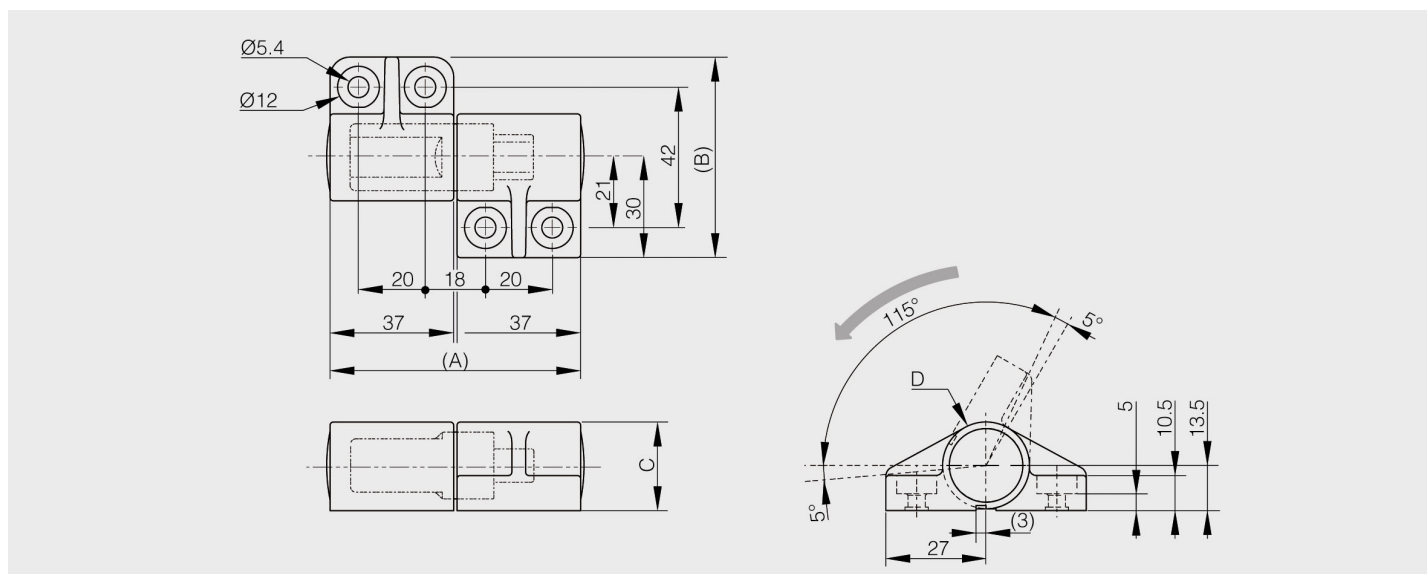
## Soft-close dampening lift-off hinge

Model : 12-7-4241



- Soft close dampening lift-off hinges: soft-close damper keeps lid from slamming shut.
- Sold in pairs (type 1 and type 2).
- Lift-off hinge type 1 has a grey shaft and the damper working direction is clockwise.
- Lift-off hinge type 2 has a white shaft and the damper working direction is counter-clockwise (shown on the drawing).
- Operating angle: 115°.
- If the opening angle is wider than 115° (+/- 5°), mechanism is broken and damper doesn't work any longer.
- Provide a door stopper to prevent from overturning beyond the prescribed angle range.
- Do not force the door to close faster in damper effective direction. It can cause damage to the product.
- When the door opening angle is small, the dampers may not work smoothly.
- Torque moment (pair):
  - 3 to 5 N.m for part number 12-7-4280.
  - 5 to 7 N.m for part number 12-7-4241.
- Torque calculation:  
Torque (N.m) = L (m) x 1/2 x W (kg) x 9.8 with:
  - L = door height in metre.

- W = door weight in kilo.
- Operating temperature: 0 to +40°C.



Material	polymer
Finish	dark grey
A (length)	75
D (pin diameter)	26
B (width)	60
C	26.5
Weight (g)	180
Opening angle	115
Note	Sold in pairs.

Material	polymer
Functions	torque damper
Torque	5 - 7 N.m / paire