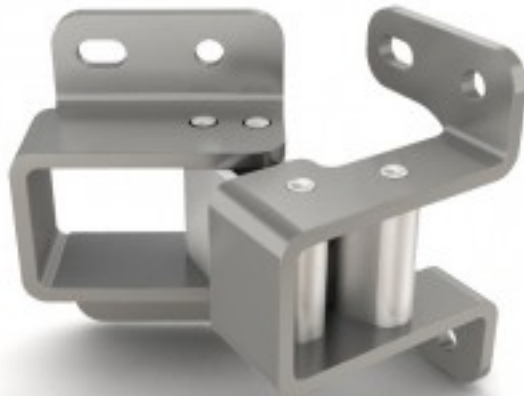


## Concealed hinges - 90° opening

Model : 70-1-3625



Pins and links in 430 stainless steel for 70-1-3520.

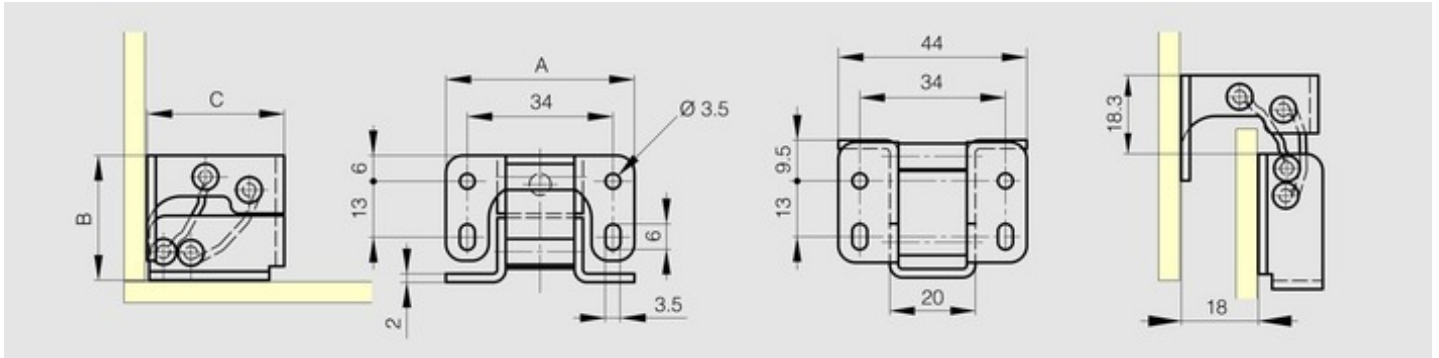
Pins and links in 316L stainless steel for 70-1-3625.

Mounting features:

- For nested doors or surface mounted doors.
- LH or RH options.
- For horizontal or vertical applications.

A full product data sheet is available on our website.

Refer to the product data sheet on our website for mounting instructions.



Material	316L stainless steel
Finish	raw
A (length)	44
B (width)	29
C	32
Weight (g)	64
Opening angle	90
Material	stainless steel
Functions	concealed