

# Hinges with dual function

## Spring hinges - aluminium profile

### Spring hinges - aluminium profile 3.80 N.m - diameter 18

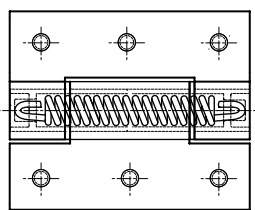
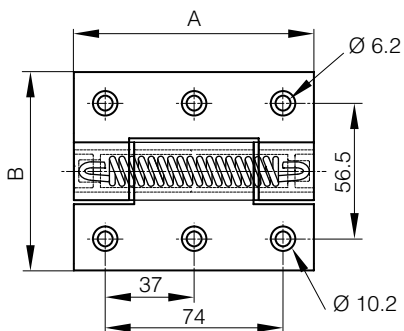


Opening spring force:  
 M(0°): 3.80 N.m / M(90°): 3.10 N.m / M(180°): 2.40 N.m  
 Closing spring force:  
 M(0°): 2.20 N.m / M(90°): 2.90 N.m / M(180°): 3.50 N.m

Free swinging hinge without spring available (part number: 72-1-4241 in colorless or 72-1-4242 in black).



Part number	Material	Finish	A	B	C	D	Note	Weight (g)
72-1-4231	6082 T5 alu	clear anodised	100	82.5	5.5	18	opening spring	183
72-1-4232	6082 T5 alu	black anodised	100	82.5	5.5	18	opening spring	183
72-1-4258	6082 T5 alu	clear anodised	100	82.5	5.5	18	closing spring	183
<b>NEW</b> 72-1-4331	6082 T5 alu	clear anodised	100	82.5	5.5	18	closing spring / with M6 studs	188
72-1-4259	6082 T5 alu	black anodised	100	82.5	5.5	18	closing spring	183
<b>NEW</b> 72-1-4332	6082 T5 alu	black anodised	100	82.5	5.5	18	closing spring / with M6 studs	188



72-1-4331 & 72-1-4332

