

3-075 Rod Latch FS PrB



Advantages

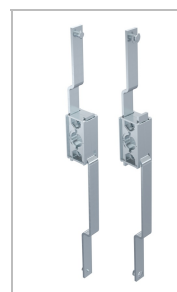
- For cutout B.
- For application within the sealed area.
- The latch can be combined with escutcheons or swinghandles.
- RH / LH application through double symmetry.
- Grounding by grounding clip (optional).

Materials

- **Housing:** zinc die, untreated
- **Pinion:** sintered metal
- **Rods:** steel, zinc plated

Remarks

1. stroke 24mm
2. length L
3. clearance



Rod latch

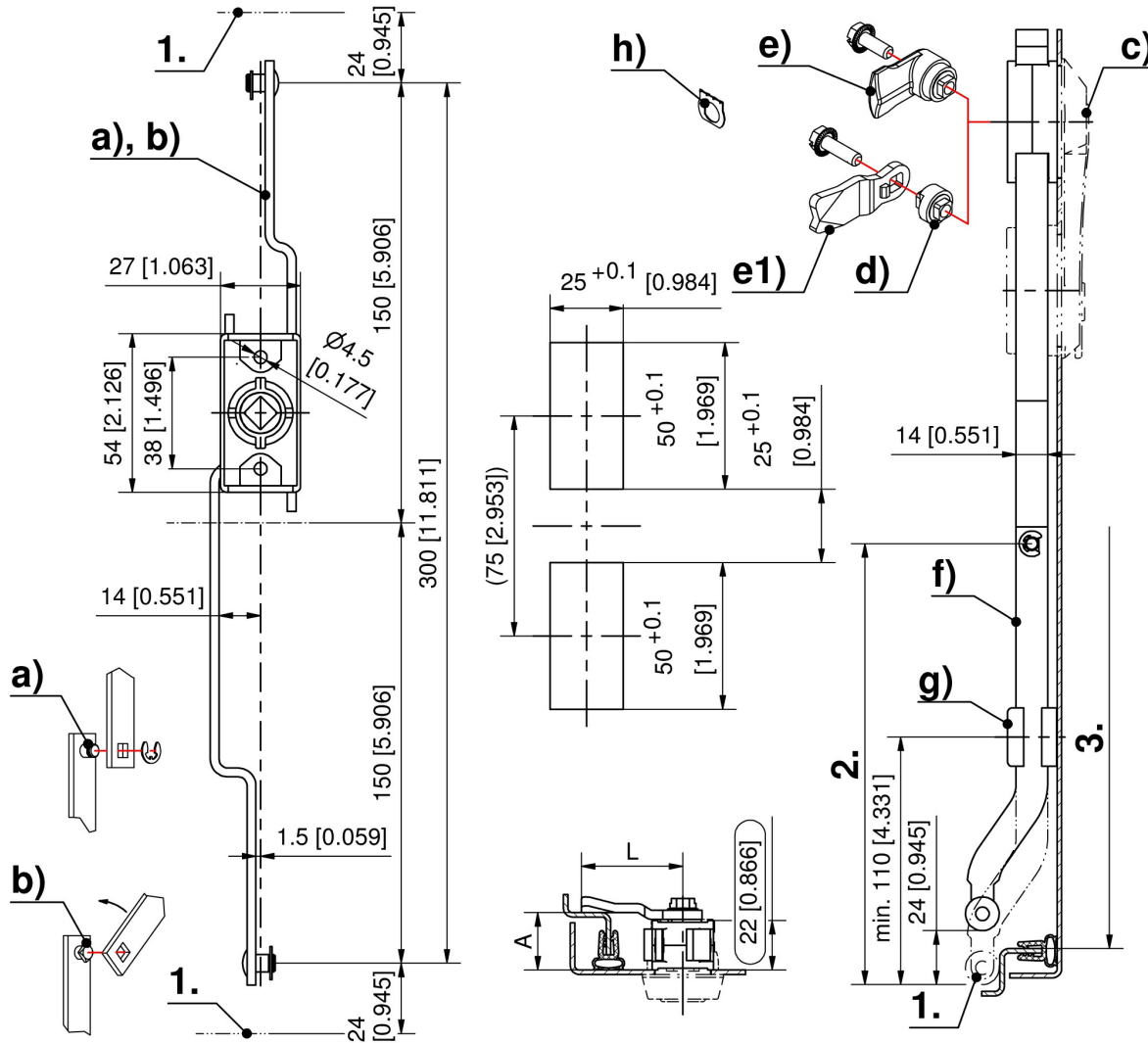
	Part Number	Rod fastening	Installation type	Delivery Unit
a)	208-9021.00-00000	C-clip	screw-on	1 pc.

* Accessories

- c) 3-070 **Swinghandle FS PrB**
- c) 3-101 **Escutcheons and Inserts**
- c) 3-135 **Escutcheon for Rod Latch PrA**
- c) 3-136 **Cutout-Cover PrA / PrB / PrC**
- d) 3-163 **Cam Adapter Zinc Die**
- e) 208-9401.00-00000 **Cam with square, A25, L30 with serrated screw M6x16**

208-9402.00-00000 Cam with square, A20, L40 with serrated screw M6x16

- e) 208-9403.00-00000 Cam adapter with serrated screw M6x20
- e) 208-9404.00-00000 Cam with square, A18, L40 with serrated screw M6x16
- e) 208-9408.00-00000 Cam with square, A30, L30 with serrated screw M6x16
- e1) 1-102 Cams L35/45 Steel
- f) 3-160 Flat Rod FS with Rollers
- g) 3-910 Rod Guide FS 23mm
- g) 3-911 Rod Guide FS 23mm
- h) 3-011 Grounding Clip Stainless Steel



Formula for rods:
cutout in the door center

$$L_2 = \frac{\text{clearance } 3. - 10\text{mm [0.394] (tolerance)} - \text{Rod Latch System in retraced condition } 300\text{mm [11.811]}}{2}$$