



HANDLE INSERTS

As well as supplying standard inserts we can also supply handle inserts, turning a standard quarter turn into a handle.

We can supply; T-Handles, L-Handles, Star Knobs and Wing Knobs in various styles.



DUSTCAPS & FINGER PULLS

For locks used in dusty environments we can supply dustcaps and finger pulls for easy opening of panels.



SERRATED LOCK WASHERS & EARTH NUTS

We can supply serrated lock washers for applications where the securing nut may become loose and earth (grounding) nuts which have sharp protrusions intended to cut through the painted coating on the metalwork.



SLIDE SHOES FOR CAMS

These low cost slide-shoes help provide a positive compression and reduce the friction and paint damage caused by constant operation.

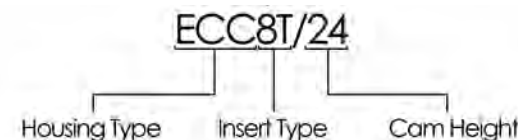
LOCK ASSEMBLY GUIDE

The Rocfast assembly service provides specifiers with a quick and simple means of getting the exact quarter-turns they need, to the specification they choose, pre-assembled and delivered on time.

There are so many combinations however that the part number selection can seem daunting, so this guide has been designed to explain how to select the correct product code and to showcase the wide range of options available.

BEFORE WE BEGIN

To start let's look at an example part number and break it down into what each represents in terms of options:



Housing Type: This three letter code determines the materials/finish of the lock assembly. e.g. ECC denotes that the lock is zinc die, chrome plated. You can find all available options on page 2.

Insert Type: This code determines the type of insert used to operate the lock. e.g. 8T denotes an 8mm triangle insert. All available inserts are shown on page 2.

Cam Height: The last code determines the cam style and cam height for the lock, (the distance between the front of the door to where it latches) e.g. 24 denotes a 45mm length cam with a height/bend of 24mm. Shorter 35mm long cams, along with 2 and 3 point cams are also available.

For full instructions on cam selection please see our "Cam Selection Guide".

Unless otherwise stated all of our assemblies include seals and washers to achieve IP65 rating. Please specify if IP67 or higher is required. If you need any further assistance selecting part numbers please do not hesitate to contact us.

1 PICK YOUR HOUSING



ECC

Zinc die chrome plated



ECB

Zinc die, black powder coated



ECP

Black Polyamide



ESS

316 Stainless Steel

2 PICK YOUR INSERT



6SQ



7SQ



8SQ



SL



7T



8T



9T



10T



7SQ



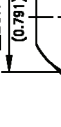
8SQ



SL



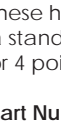
7T



8T



9T



10T



7SQ



8SQ



SL



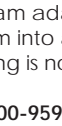
7T



8T



9T



10T



7SQ



8SQ



SL



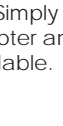
7T



8T

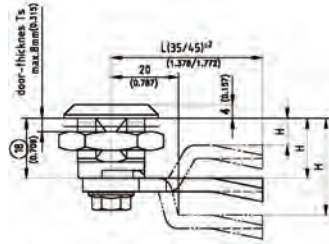


9T

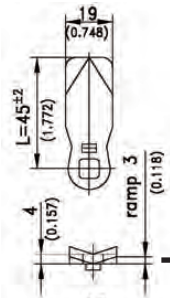


10T

3 PICK YOUR CAM

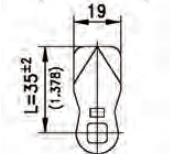


To determine the cam needed, find H. H is the distance in mm from the rim of the lock to the top of the cam, (where the lock will latch to the cabinet frame). Then match H to a number below.



45mm cams

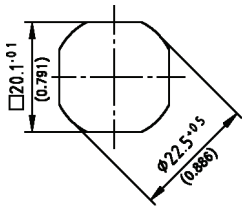
2	18	32	45
4	20	34	47
6	22	35	50
8	24	36	53
10	25	38	55
13	26	40	
14	28	42	
16	30	44	



35mm cams

6	18	28	44
8	20	30	
10	22	35	
13	24	38	
14	25	40	
16	26	42	

CUT OUT INFORMATION



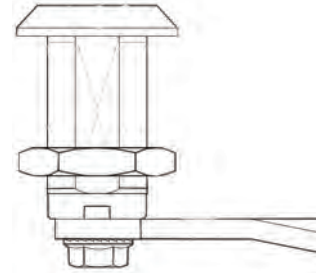
CAM ADAPTERS

For 3 point locking we can supply these handy cam adapters. Simply slot a standard cam into an adapter and 3 or 4 point locking is now available.

Part Number: 200-9596

EXTENDED BODY LOCKS

1 PICK YOUR HOUSING



ECC/EXT30/
Zinc die, chrome plated, body length 30mm

ECC/EXT36/
Zinc die, chrome plated, body length 36mm

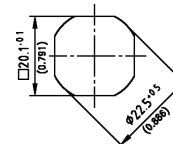
ECC/EXT40/
Zinc die, chrome plated, body length 40mm

ECC/EXT50/
Zinc die, chrome plated, body length 50mm

ECC/EXT60/
Zinc die, chrome plated, body length 60mm

Zinc Die, black powder coated are also available, for ordering please replace ECC with ECB

CUT OUT INFORMATION



2 PICK YOUR INSERT



6SQ



7SQ



8SQ



SL



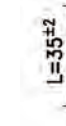
7T



8T



9T



10T



7SQ



8SQ



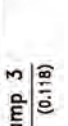
SL



7T



8T



9T



10T



7SQ



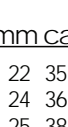
8SQ



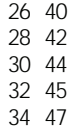
SL



7T



8T



9T



10T



7SQ



8SQ



SL



7T



8T

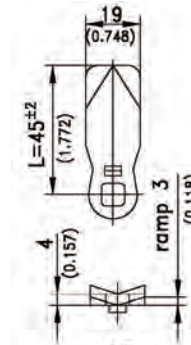


9T



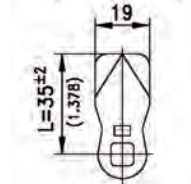
10T

3 PICK YOUR CAM



45mm cams

2	4	22	35	50
6	8	24	36	53
10	10	25	38	55
13	13	26	40	
14	14	28	42	
16	16	30	44	
18	18	32	45	
20	20	34	47	



35mm cams

6	8	20	30
10	10	22	35
13	13	24	38
14	14	25	40
16	16	26	42
18	18	28	44